

ADDIS ABABA UNIVERSITY
MEDICAL FACULTY
DEPARTMENT OF COMMUNITY HEALTH

**Assessment of Sexual Coercion Among Addis Ababa
University Female Students**

A thesis submitted to The School of graduate studies

Addis Ababa University

In partial fulfillment of the requirements of

The Degree of Masters of Public Health

By

Seblework Tadesse, BSc

May 2004, Addis Ababa

ADDIS ABABA UNIVERSITY
MEDICAL FACULTY
DEPARTMENT OF COMMUNITY HEALTH

Assessments of Sexual coercion among Addis Ababa

University Female Students

By

Seblework Tadesse

Department of Community Health, Faculty of Medicine,
Addis Ababa University

Approved by Examining Board

Chairman, Department Graduate Committee

Dr.NegussieDeyessa

Advisor

Examiner

Examiner

ACKNOWLEDGMENT

First of all, I would like to thank Family Health Department (MoH) for funding this study. I also like to thank the Addis Ababa Health Bureau for sponsoring me. I would like to pass my heart –felt gratitude to my advisors Dr Ahmed Ali and Dr. Negussie Deyessa for their constructive advice and support during the whole process of the study. I have also benefited very much from the comments of Dr. Abera kumie, Dr. Misganaw Fantahun and Ato Wagari Derssa who reviewed the manuscript. I would like to thank the Addis Ababa University and Kotebe Teachers Training College for allowing me to conduct the study. I would like also to express, my heart full gratitude to the 13 colleges, schools, and faculties under the Addis Ababa University and Kotebe Teachers Training College, administrators and students. I would like to thank data entry clerks and the department of Community Health office and library staffs, data collectors, supervisors whose contribution was vital to the completion of this paper. The study participants are acknowledged for their participation.

Last, but not least, I would like to thank my daughter Saba Belay for her stay by my side through out this thesis work.

Table of contents

ACKNOWLEDGMENT	I
Table of contents	II
List of tables	III
List of Figures	IV
LIST OF ANNEXES	V
LIST OF ABBREVIATIONS	VI
Abstract	VII
1. Introduction	Error! Bookmark not defined.
2. Literature review	4
2.1 Background	4
2.2. World wide magnitude of sexual coercion	4
2.3. Factors that perpetuate sexual violence against women	6
2.4. Consequences of Sexual Coercion	7
2.5. Ethiopian situation	11
3. Objectives	14
4. Materials and methods	15
4.1. Study design.....	15
4.2. Study area.....	15
4.3. Study population	15
4.4. Sample Size Determination.....	16
4.5. Sampling procedure	16
4.6. Data collection tool	17
4.7. Data Analysis	18
4.8. Variables	18
4.9. Ethical Consideration.....	19
4.10 Operational definitions.....	20
5. Results	22
5.1. Socio-demographic characteristics of AAU, study subjects.....	22
5.2. Parental characteristics of AAU, study subjects, May 2004.....	24
5.3. Reported sexual history, reasons for sexual intercourse and substance use of AAU, study subjects, 2004.....	26
5.4 Prevalence of sexual coercion and reported reasons of rape victims.....	29
5.5. Immediate reported outcome of complete rape.	33
5.6. Factors associated with completed rape in life time	35
5.7. Focus group discussions	41
6. Discussion	44
7. Strength and Limitation of the study	49
7.1 Limitations	49
7.2. Strengths	49
8. Conclusion	50
9. Recommendation	51
10 References	52
11. Annexes	58

List of tables

	Tables	Page
Table 1	Socio demographic characteristics of Addis Ababa female University students, May, 2004	23
Table 2	Socioeconomic characteristics of parents or family of origins of Addis Ababa University female students, May 2004	25
Table 3	Reported sexual history and substance use of Addis Ababa University female students. May, 2004	27
Table 4	Life time and 12 months prevalence of sexual coercion among Female Addis Ababa female students, May 2004	30
Table 5	Perpetuator and condition during rape of female students of Addis Ababa University female students, May 2004	32
Table 6	comparison of life time completed rape by socio demographic characteristics Of Addis Ababa University female students, May 2004	37
Table 7	Comparison of completed rape by socio-economic characteristics of Parents of Addis Ababa University female students, May 2004	38
Table 8	Comparison of class performance among sexually coerced and None coerced of female Addis Ababa female students, May 2004	40

List of Figures

	Title	Pages
Figure 1	Reasons for first sexual initiation of sexually active respondents Addis Ababa University female students	Of 28
Figure 2	Reported reasons of rape victims of Addis Ababa University female students	31
Figure 3	Immediate reported consequence of victims of sexual coercion Addis Ababa University female students	Of 34

LIST OF ANNEXES

Annex		Pages
Annex 1	Sampling Procedure	58
Annex 2	Structured English Questionnaire	59
Annex 3	English Focus Group Discussions	67
Annex 4	Structured Amharic Questionnaire	69
Annex 5	Amharic Focus Group Discussion	75
Annex 6	Map of the study area	76

LIST OF ABBREVIATIONS

AAU	Addis Ababa University
AIDS	Acquired Immunodeficiency Syndrome
FGD	Focus-Group Discussions
HIV	Human Immunodeficiency Virus
MoH	Ministry of Health
STDs	Sexually Transmitted Diseases
STIs	Sexually Transmitted Infections
CI	Confidence Interval
IEC	Information Education and Communication
OR	Odds ratio

Abstract

Cross-sectional institution based survey using self-administered anonymous questionnaire and Focus group discussion, was conducted among female students of Addis Ababa University to determine the magnitude, immediate consequences and socio demographic correlates of sexual coercions. A total of 612 female students were involved in the study. The quantitative study revealed that the prevalence of lifetime completed and attempted rape was 12.7 % (95%CI, 10.06, 15.33) and 27.5% (95%CI, 3.96, 31.3) respectively. Sexual harassment in lifetime and 12 month period was reported in 58% and 41.8% of students, respectively.

Rape was significantly associated for those students, who have boyfriends, and from divorced family as a risk factor, and for those living with both parents before joining university and money sent as needed with near by living families as a protective factor. Promise by friends, physical force and alcohol use were also contributing to the offence. Unwanted pregnancy, abortion and psychological disturbances were the immediate reported consequences of rape victims, which signify the role of rape in these health problems. After their victimization 93.6% of the victims didn't share the event with anybody. Victims reported about the perpetrator that 93.6% was a person known by them.

The findings of this study indicate that female adolescents even in higher educational level are at higher risk of sexual coercion and its consequences. It is recommended that sexual coercion needs attention and action from concerned bodies, education for students on how to challenge gender norms and to create new models of healthy relationship, for the victim preparation of rape crisis center in health institution with standardized treatments for STDs, raising the awareness of policy making bodies in order to implement the existing punishment on the abusers and encouraging victims to report for legal bodies.

Key words: - Rape, Attempt rape, Harassment and Adolescents

1. Introduction

Violence against women, in its various forms is endemic in communities and countries around the world, cutting across class, race, age, religious and national boundaries. (1) According to the United Nations Declaration, violence against women includes any act of gender based violence that results in physical, sexual, psychological harm or suffering to women, including threats or such acts, as coercion or durable deprivation of liberty, whether occurring in public or private life (2).

Over the past 25 years, there is a recognition of gender-based violence of its under reporting and high prevalence and increased acknowledgment that it can affect women at any stage of their lives and can occur in various forms that may involve physical, psychological sexual and or economic abuse. Violence against women is a crucial violation of human right to liberty and freedom from fear, and is now recognized as a priority public health and human rights issue (3).

Two of the most common forms of violence against women are abuse by intimate male partners and coerced sex, whether it takes place in childhood, adolescence or adulthood. (4) Sexual coercion exists along a continuum, from forcible rape to nonphysical forms of pressure that compels girls and women to engage in sex against their will. The touch some of coercion is that a woman lacks choice and faces several physical or social consequences if she resists sexual advances. Around the world at least one woman in every three has been beaten, coerced into sex, or otherwise abused in her lifetime (4). Much sexual coercion takes place against children or adolescents in both industrial and developing countries were by between one third and two thirds of women sexual assault victims are 15 years or younger (5). During childhood, young girls can become easy targets for older male relatives or friends who obtain sex through force or

deception. Later, boyfriends, teachers, relatives or other men enter into unwanted sexual encounters. (4)

Information about women's health in the third world countries has been relatively scarce and until recently available information tended to focus on the most negative indication of women's health status, that is, the maternal mortality rate. The safe motherhood initiative represents a first step forward focusing more on the health of women, to induce the full range of women's reproductive health needs. (6, 7)

Health hazards are present at every stage of women's life cycle in developing countries which includes reproductive health problems, excess female mortality in childhood, violence against girls and women and occupational and environmental hazards (6)

Health and social problem of young people (age 10-24) includes alcohol and drug abuse, accidents, unwanted pregnancy, abortion and STD including HIV/AIDS. (8,9,10) This age group is also particularly vulnerable to being used by others persons sexually which is receiving increased attention nowadays. (10)

Sexual violence and coercion comprises a significant component of overall violence against women although evidence remains limited, due to the almost universal stigma (11). There is increased recognition of the links between coercive sex and adverse reproductive health outcomes including; unintended pregnancy, non-use of contraception, unsafe abortion, gynecological morbidity and HIV/AIDS (12).

Among the group, which are vulnerable to sexual coercion and its consequences due to age and other related factors, include university students.

In Ethiopia, girls are denied their freedom of movement and are afraid of moving or walking alone in broad day light even in the street of big cities like Addis Ababa. Rape which was rarely reported in the past is being reported because some of the particular cases are horrible. (13) In the

context of Ethiopian situation since there are no enough studies on prevalence and consequences of sexual coercion, it is relevant to look into the problem so as to have more information which will help for policy makers and organizations working with adolescents to design intervention measures.

The current study area, Addis Ababa University, is an institution where female students from different geographical area and socio-economic background are involved. The potential for exposure to sexual coercion as well appears to be inevitable. This study area is chosen since the study subjects are more matured in age than high school adolescents and could possibly differentiate coercion from normal affection and may give a better response. Thus this study is envisaged to provide valuable information on the existing magnitude and consequences of sexual coercion.

2. Literature review

2.1 Background

Violence against women has gained increasing international attention since the ratification of the United Nation declaration on the elimination of violence against women in 1993.(14) However there has been an uneven response to violence against women as a health problem from country to country. Gender-based violence has an enormous impact on women's lives. It causes physical and psychological harm including homicide and suicide and on going health problem, it reduces women's autonomy and destroys their qualities of life, it affects their ability to care for themselves and their families, and it diminishes their productivity in under society and in the process of development. (15)

Violence against women has enormous direct and indirect costs in terms of government and community resources and services, including health services, law enforcement and legal services that respond to its occurrence consequences and prevention. (14)

2.2. World wide magnitude of sexual coercion

National random surveys from Barbados Canada, the Netherlands, New Zealand, Norway and the United States revealed that 27 to 34% of women interviewed have been sexually abused during childhood (16, 17).

Cross-national research on the prevalence of sexual assault among college-aged women also reveal remarkable high rates of violation, between 19 and 27.5%, of women surveyed in Canada, Korea, New Zealand, United Kingdom and the United States reported being the victim of a completed or attempted rape in their lifetime (5; 11).

In a study of 450 schoolgirls 13-14 years old, in Jamaica, 13% experienced attempted rape, 4% had been raped, half before the age of 12, one-third experienced unwanted physical contact, and one-third had been harassed verbally. (18) A community based survey of 4279 reproductive-aged women in current partnerships in the Racy District of Uganda; one in four women reported having experienced coercive sex with their current male partner, with most women reporting its occasional occurrence (19).

A study in Cape Town, South Africa on adolescences reported 11% of rape and 72% forced sex, while in other areas of South Africa, a survey confirmed alarmingly high incidence, between 28 and 30%, of forced sexual initiation among young women (20).

South African police crime statistics indicated 240 incidents of rape and attempted rape per 100,000 women each year (21). However the most important sexual coercion seems to go unreported in survey and to the police. In a similar study in Uganda, of 400 primary school students 49% of sexually active girls were reported to have had forced sex. (22) In a prospective study of rape in a dating relationship in USA in 1995 it was found that 23% of girls reported being sexually assaulted. (23)

In USA, Washington state in 1997 of 3128 respondents of girl's grades 8, 10, and 12, 23% of all girls report sexual abuse. (24) A study on 1992 in Costa Rica a retrospective survey of university student, reveal 32% of women report sexual abuse (25)

In Malaysia a study conducted in 1996 on 616 paramedical students <18 yrs 8% of women report sexual abuse. (26) In Switzerland on National survey of 3,993 girls, ages 15-20, enrolled in schools or professional training programs, 19% of girls report sexual abuse (27).

A survey of over 6000 college students found that 42% of women students reported some type of sexual assault including forcible sexual contact attempted rape, and completed rape. (28)

Prevalence studies in America indicated that at least 20% of adult women, 15% of college women, and 12% of adolescent girls have experienced sexual abuse and assault during their lifetimes (29).

Recent studies suggest that majority of rape are perpetuated by none strangers which include acquaintances, dates, husbands, long term partners and family members. (30) Acquaintances represent 75% of more all rapes which tend to cloud the issue of consent for many women and society in general .(31,32) In a reports from USA , Peru and Malaysia perpetrators are known in 78% , 60%, and 68% of cases respectively. (33) Boy friends are the most commonly reported perpetrators followed by dates, friends and acquaintances. (34, 35) Children are most at risk of assault by family members and others caretakers. (36) In a maternity hospital in Lima, Peru 90% of young mothers aged 12-16 have been raped by their fathers, step fathers or relatives .(33) A study in America reported that suicidal ideation and attempt 33-50% and 20% respectively of psychological impacts . (32)

2.3. Factors that perpetuate sexual violence against women

The exact cause of gender violence lacks refinement the results of several recent cross-cultural studies suggest that hierarchal gender relation-perpetuated through gender socializations and the socioeconomic inequalities of society are integrally related to violence against women. (11) Two

cross cultural studies suggest that rigid gender roles, especially definition of masculinity linked to dominance, toughness or male honor are highly correlated with violence against women (37)

The greatest cause of violence against women, it is argued is government tolerance and inaction. The role of substance use, particularly alcohol in relation to sexual violence is multi-faced and complex. Alcohol may affect individuals behaviors while the social settings in which they are consumed, predispose to sexually violent behavior. (38)

Historically, rape has been perpetrated during episodes of organized violence's as a means of breaking the structure of communities, demoralizing the enemy, and energizing the troops.

Women are frequently regarded as a legitimate 'spoil of war'. Moroccan troops fighting with the free French against the Italian in 1943 were given income to rape and plunder in enemy territory in order to spur them on. Mass rape in war has more recently been documented in Liberia, Uganda, Peru, Cambodia, Somalia and Bosnia. (11).

Individual, familial, pubertal emotional and psychological states are conditions, which predispose to sexual abuse (34). Youth are involved in a violent behavior because of lack of economic opportunity, inadequate training in basic social skills by family or school, lack of positive role models and profusion of violent anti social role models. (39) It is also stated that where there was poor monitoring of parents, children are vulnerable to be victims of sexual violence. (40)

2.4. Consequences of Sexual Coercion

The effect of violence can be devastating to women, reproductive health as well as to other aspects of her physical and mental well being (4). Sexually violated women are at a high risk of teenage pregnancy, unwanted pregnancy high-risk pregnancy, adverse pregnancy outcomes and of contracting sexually transmissible diseases including HIV/AIDS (20).

The chance of becoming pregnant from a rape in the United States is estimated at 5%. (4). In Mexico rape crisis report shows that 15 – 18 % of their clients become pregnant because of the rape (11). Victims everywhere must also endure shame and stigma that cultures ascribe to sexual violation. In some Middle East and Asian cultures the strain of rape is so great that women are driven to suicide or are killed by family members to cleanse the family honor (4). A study of female homicide in Alexandria, Egypt, revealed that 47% of women murder was carried out by family members following a rape (6). And almost 8% of all suicides in that city were women who committed suicide after sexually assaulted (4, 11).

Physical and sexual abuse lie behind some of the most interactive reproductive health issues of our times unwanted pregnancies, HIV and others sexually transmitted infections, and complications of pregnancy. (4) Women who are sexually abused in childhood also at greater risk of being physically or sexually abused as adults. (41) Although for some children the effects of sexual abuse are severe and long term not all will experience consequences that present into later life. (42)

Sexual abuse can lead to wide variety of unhealthy consequences, including behavioral and psychological problems, sexual dysfunction, relationship problems, low self-esteem, depression, thoughts of suicide, alcohol and substance abuse, and sexual risk taking. (43)

Significantly, many of the key health outcomes of coerced sex include unwanted pregnancy and STD .A study conducted at the maternity Hospital in Lima, Peru found that 90% of young mother 12 to 15 years were victims of rape. (4)

The possibility of HIV transmission may be facilitated by damage to the genital area. A study in Mumbai reported that 20% of all pregnancies among adolescents seeking abortion had occurred as a result of forced sex, while a study in Thailand reported that one in ten rape victims had been infected with STDs. (38)

The negative consequence of abuse extends beyond women's sexual and reproductive health to their overall health, the welfare of their children and even the economic and social fabric of nations. By sapping women's energy, undermining their confidence and compromising their health, gender violence deprives society of women's full participation. (44)

Violence against women and girls include physical, sexual, psychological and economic abuse. It is often known as "gender-based" violence because it involves in part from women's subordinate status in society.(4) Many cultures have belief norms and social institutions that legitimize and therefore perpetrate violence against women. The same that would be punished if directed at an employer a neighbor or an acquaintance go unchallenged when men direct them at women especially within the family. (4)

Two of the most commonly documented consequences of sexual abuse are early onset of sexual activity and an inability to distinguish sexual coercion from affectionate behavior. (45)

Rape or forced sex mostly perpetrated by individuals known to the victim seen as intimate partners, male family members, acquaintances and individuals in position of authority. Rape can occur while women are asleep, under the influence of alcohol, recreational drugs. Sexual assaults by strangers are widely acknowledged as crime, by contrast, rape in job, and forced marriage are tolerated or socially condoned in many countries (46)

A woman has 4 times greater chance of being raped by someone she knows than by a stranger. The risk of rape is four times higher than the others for women aged 16 to 24 the prime dating age (47)

Girls or women who have been sexually assaulted or raped are frequently said to have "asked for it" by the way they were dressed or behaved-even when the victim a child. The experience of physical and sexual violence mostly perpetrated by known men is also common among Italian women attending different health and social services, which has a direct or indirect effect on their physical mental and social well-being .(48) In industrialized countries between 13% and 20% of women are raped at least once and between 20% and 30% of young girls and adolescents experience sexual violence the prevalence estimates of sexual violence, non-industrialized countries appear to be higher (49).

2.5. Ethiopian situation

Even though the extent of rape (sexual violence) in Ethiopia was not statistically evidence on all over the country there are some published and unpublished studies. A study conducted among high school students in Addis Ababa and Western Showa revealed the prevalence of performed rape and attempted rape was 5% and 10% respectively, and harassments was 74.3%. (50)

Another high school based prevalence study among female students in Debarq, northwest Ethiopia reported, prevalence of performed and attempted rape as 8.8% and 11.5% respectively.(51)

On a study of sexual violence among female street adolescences in Addis Ababa the prevalence of rape was 15.6% and attempted rape was 20.4% respectively.(52) In unpublished reports of united nation (UN) conference hall sep, 1999 a study done on Addis Ababa high school students , the prevalence of completed rape was 3%,attempted rape 11.6%, deceptive kiss 20.3% and verbal harassment 35.3%.(53)

On one unpublished study conducted on violence against women at selected health institutions in Addis Ababa from 1987 to 1989 (Eth.c) a total of 455 rape cases were reported were the victims' age range was from 7 to 24 years. (54) On a study conducted among high school students in Harar forced sexual intercourse was reported 14.7% (55)

The reasons for rape or factors of rape in Ethiopia are culture and tradition, poverty and war. Culturally transmitted assumptions about men's dominance over women, men's power over women etc contribute highly to the ever increasing number of rape cases reported; further more Ethiopians culture tolerates sexual violence against girls and women were abduction and early marriage, always followed by rape are norms in some parts of the society. (56) Poverty drives women and children into commercial sex and streetisme, which make them, vulnerable to sexual

exploitation, abuse, rape and murder. (53, 56) Ethiopian women were raped during the two year Ethio- Eritrean conflict by Eritrea Soldiers. (56) The most prominent consequences of rape in Ethiopia are psychological, social, economic and health problem. (13, 56) Rape is associated with social stigma, the victims lose their dignity and respect in society. They also find it difficult to participate in social activities, as a result of which they alienate themselves from society and run away to face prostitution, streetism and social problem. (56)

On study among female high school students in Debarq, reported those rape being performed on them, unwanted pregnancy, suicide attempt vaginal discharge and abortion were the consequences in 21%, 15.8% and 10.5% and 5.3%, respectively.(51) On other study on prevalence and outcomes of sexual violence among high school students in Addis Ababa ,unwanted pregnancy, suicide attempt and vaginal discharge were the consequences of 17%, 6% 24% (50). According to abortion survey in Addis Ababa, 27.2% of women surveyed were girls' age less than 21 and rape was reported as a cause of conception in 10% of pregnancies. (57)

Considering the problems of children and adolescents rape relevant documents and legal issue in Ethiopia are: - The Ethiopian government ratify and endorsed the convention of the rights of the child on December 9, 1991 which had been adopted by the general assembly of the UN on 20 Nov, 1989. In the convention in Article 34 it was stated that "parties under taken to protect the child (under 18) from all forms of sexual exploitation and sexual abuse". (58) The Ethiopian penal code of 1957 (Eth.Ca) articles 589 stated that "whoever couples a women to submit to sexual intercourse outside wedlock whether by use of violence or gave intimidation, or after having rendered her unconscious or incapable of resisting is punishable with rigorous , imprisonment not exceeding 10 years. Where it is committed "on a child under 15 years of age,

or on an inmate of a hospital alms, home or asylum, of establishment of education and correction, , who is under the supervision or control or dependent upon the accused person,” it is “punishable by a rigorous imprisonment not exceeding 15 years.(59)

By considering these background information there is a need of filling the gap regarding of sexual violence against women (adolescences) in our country, which prompt the conduct of this study.

3. Objectives

General Objectives

The general objective of this study is to determine the prevalence, immediate consequences of sexual coercion and to assess its socio demographic correlates among female Addis Ababa University students.

Specific Objectives

- To determine the prevalence of life time and 12 months rates of sexual coercion
- To assess the immediate health consequences of sexual coercion
- To examine socio-demographic correlates of sexual coercion
- To compare academic performance among female students who experienced sexual coercion with those who did not

4. Materials and methods

4.1. Study design

The study used both qualitative and quantitative research methods. For the quantitative study a cross sectional survey was employed in order to assess sexual coercion. For the qualitative study, FGD was conducted in other than Addis Ababa University, College University with similar educational standard of under graduate students.

4.2. Study area

Addis Ababa University is one of the largest higher learning institutions in Africa that was established at the end of the 1950. It was granted a charter in July 1950 as an autonomous higher learning institution under different names. Since then the university has expanded and currently consists of one college, seven faculties, five schools, and four-research institutions which are located in Addis Ababa "Sidist kilo", "Arat kilo", "Amst kilo", Black Lion Hospital in Addis Ababa, and in Debrezeit Faculty, of veterinary medicine which is 45 kms from Addis Ababa.

4.3. Study population

The source population for the study was female Addis Ababa University, undergraduate students, and the study population was all female students registered as 2nd year or above for 2003/2004 academic year. The study excluded all newly registered students that came from preparatory programs, blind students who can't read a questionnaire and students who attended in the university for less than a year.

4.4. Sample Size Determination

The study used a single proportion determinants formula of a sample size. To determine minimum sample size, the study considered a 15% prevalence of sexual violence obtained from a previous study among Addis Ababa high school students in 1998, (50) at 95% certainty and maximum discrepancy of $\pm 3\%$ between the sample and the underlining population. An additional 10% was added as a contingency to increase power and compensate for possible non response, and a total of 598 Addis Ababa university female students were needed.

Using the formula:

$$n = (Z\alpha/2)^2 p (1-p) /d^2$$

$$n = \text{sample size} \quad p=0.15(15\%)$$

$$Z\alpha/2=1.96 \quad d=0.03 (3 \%)$$

Adding 10 % for non response rate

$$(1.96)^2 * .15(.85)/.03^2 = \underline{\underline{598}}$$

4.5. Sampling procedure

Multistage sampling procedure was employed. The study followed the universities four group localization.

Sample size for each locality was distributed according to proportion to population size. Students sampling frame was taken from respective faculty deans or their delegates, and was recognized according to the four group localization and simple systematic sampling was employed in each localities. (Annex: I)

4.6. Data collection tool

Focus group discussion (FGD) was conducted among two groups of Kotebe Teachers Training College's undergraduate students to help in designing the questionnaire and to look for sensitive issues. Purposive sampling was used in selection of study participants. In order to establish homogeneity within the group, they were structured by sex. Ten girls participated in the first FGD and 12 boys in the other. The age distribution of girls, who participated in the FGD, was between 18-25 years and for boys it ranged between 19-27years. Boys were included because research on boys could provide important insight into the causes of violence, and impacts of different forms of intervention.(1) Therefore one FGD was among girls, and the other was among boys .An FGD guide/ checklist were developed that contained a list of questions that was supposed to explore the purpose of the study. The discussion was conducted by a moderator, assisted by a reporter, and was tape recorded.

For the quantitative study a structured questionnaire was prepared first in English and translated to Amharic, and was finally back translated to English in order to ensure its consistency for self administration. The questionnaire was pre-tested in one of the department of the University which was not included in the study, and an appropriate modification was made based on the findings. Data were collected by ten nurse tutors, after two day training was given. In addition to the principal investigator, two supervisors were assigned to lead the data collection, to check for completeness and consistency of a questionnaire, and to assist data collectors. Before data collection was commenced, heads and student dean's respective faculties, and colleges and schools were approached using a letter prepared by Department of Community Health. List of female students, selection of eligible students and questionnaire administration halls/ rooms

support were also obtained from these heads and student deans or their delegates. The selected students were made to seat separately and the purpose of the study was well explained. Following a self administered response to the questions, completed questionnaire were returned with a sealed envelop to a collection box that was put in front of the gate.

4.7. Data Analysis

Quantitative data was entered, cleaned and processed by EPI-INFO version 6 statistical packages. Analysis of association for selected exposure variables was done with the outcome variables. Logistic regression was performed using SPSS (Statistical package for social science) version 10. The result was presented using appropriate absolute numbers, frequencies, proportions, odds ratio and confidence interval.

Recorded and reported discussions of the FGDs were first transcribed completely to Amharic and fully translated to English and were analyzed descriptively.

4.8. Variables

For the purpose of meeting the objectives of the study the following variables were included.

Independent Variables

Socio-demographic characteristics including: - age, residence, educational status, parent marital status, student's marital status, religion, ethnicity, family background including; family income; money sent (provided by family member)

Dependent Variables

1. Sexual coercion - includes rape, assault, and harassment.
2. Consequences of sexual coercion. - Includes problems on social, physical, educational and psychological (symptoms).

4.9. Ethical Consideration

Before starting of the data collection process, ethical clearance was obtained from the Department of Community Health, Addis Ababa University. Informed consent was obtained from the study participants after a brief explanation of the benefit of the study was made. Participants' confidentiality of information was assured by excluding names as identification in the questionnaire.

4.10 Operational definitions

Sexual Coercion – is the act of forcing (or attempting to force) a female student through physical body harm, violent threats, verbal insistence, deception, cultural expectation or economic circumstance to engage in a sexual behavior against her will.

Sexual harassment – is unwanted sexual behavior such as physical contacts or verbal comments, jokes, questions, and suggestions.

Rape - is the act of forcing a female student through violent threats and deception to engage in sexual behaviors with penetration of the vagina.

Performed rape - is defined as any non consensual penetration of the vagina by physical or by threatening of body harm, or when the victim is incapable of giving consent

Attempted rape – is defined as a trial to have sexual intercourse without consent of the girl but with out penetration of the vagina

Consequence of sexual coercion – Creates implications on **Social, Physical, Economical, Educational, and Psychological** status of the victim women or girl. (13)

Social implication – has a social stigma ,were victims considered socially unacceptable and regarded as vulgar and promiscuous , blamed for immoral act lose respect and dignity by the society , where victim girls not able to find husbands and flee to unknown towns.

Physical consequence – raped victims reported problems of pregnancy, abortion, and sexuality transmitted diseases (STDs) including HIV/AIDS with other physical injuries like pain, bleeding, loses of virginity and other physical problems.

Psychological implication – rape victims when reported to have symptoms like: -suffer of anger, shame, self blame, powerlessness, denial, and fear followed by nightmares, phobias, sexual dysfunction and suicidal tendency.

Economic implication – sometimes parents are forced to take their daughter out of school because of afraid of rape or girls drop out of school after being raped or abducted which results improper education and unemployment or poverty.

5. Results

5.1. Socio-demographic characteristics of AAU, study subjects

A total of 612 AAU, female students were involved in the study of on 302(49.3%) were from main campus and Faculties of Business and Economics, 167(27.3%) from Science and Art, 100 (16.3%) from pharmacy and Technology, and 100(16.3%) from medicine & Veterinary. Among the population 316 (51.6%) were 2nd year, 219 (35.8%) were 3rd year and 77 (12.6) were 4th year or more. The mean age of the respondent's was 21.2 ± 2.2 years and more than 93% were below the age of 25 years. Among the respondents 28 (4.6%) reported to be married.

The predominant religion was Orthodox Christian 420 (68.6%), and Amhara ethnic group compromised 312(51.0%) followed by Oromo 124 (20.3%). (Table. 1)

Table 1: Socio-demographic characteristics of Addis Ababa university female students, May, 2004 (n=612)

Character	No	%
Residence Campus		
Main campus & FB	302	49.3
Pharmacy & Technology	100	16.3
Science & ART	167	27.3
Medicine & Veterinary	43	7.2
Educational status		
2 nd year	316	51.6
3 rd year	219	35.8
≥ 4 th year	77	12.6
Age		
< 20	262	42.8
20- 24	309	50.5
≥ 25	41	6.2
Mean ± SD	21.18 ± 2.19	
Marital status		
Married	28	4.6
Un married	584	95.4
Religion		
Orthodox	420	68.6
Protestant / Catholic	124	20.3
Muslim	47	7.7
Others	21	3.4
Ethnicity		
Amhara	312	51.0
Oromo	124	20.3
Tigre	81	13.2
Others	95	15.5

5.2. Parental characteristics of AAU, study subjects, May 2004.

The majority of the respondents had elementary school complete parents, fathers 258 (42.5%), and mothers 276 (45.31%), followed by diploma or degree holders 205 (33.5%) for fathers and 132 (21.6%) for mothers, and 138 (22.55%) 65 (10.6%) of the respondents have illiterate mothers and fathers respectively.(Table 2) Four hundred sixteen (68.0%) of the respondents came from a family size of 5-10 persons and have a mean family size of 7.67 ± 3.20 persons. Out of the respondents 149 (24.3%) were born first order for their parents. Before joining the University 413(67.5%) were living with both parents, 115 (18.8%) with single parent and the remaining 15 (2.5%) students were living alone.

The mean family monthly income of the respondents was 1385.03 ± 1316.50 birr with range from 50 to 9949 birr. Out of the 404 students who responded, 276 (68.3%) students have family having monthly income above 700 Birr.

Four hundred and twenty five (69.4%) parents of the respondents were currently married, and the remaining 174 (28.4) parents marital status was reported to be divorced, widowed or separated.

Two hundred forty seven (40.4%) of the respondents were receiving money on a monthly basis, the other 125 (20.4%) were receiving on a semester or a year basis and 37 (6.0%) of the students never had a secured money at all. Of those who got money 229 (48.8%) reported that the money sent was not enough. (Table. 2)

Table 2. Socioeconomic characteristics of parents or family of origin of Addis Ababa University female students, May, 2004 (n=612)

Character	No	%
Educational Status		
Father		
Illiterate	65	10.6
Complete elementary	258	42.2
Complete high school	84	13.7
Diploma / Degree	205	33.5
Mother		
Illiterate	138	22.55
Complete elementary	276	45.1
Complete high school	66	10.8
Diploma / Degree	132	21.6
Family Size		
< 5	58	9.5
5 – 9	416	68.0
≥ 10	138	22.5
Mean ± SD	7.67 ±3.20	
Birth Order		
First	149	24.3
2 nd – 4 th	305	49.8
≥ 5 th	158	25.8
Parents marital status		
Married	425	69.4
Divorced / Widowed/ Widowers	174	28.4
Both not alive	13	2.2
Guardian before joining university		
Alone	15	2.5
Single parent	115	18.8
Both parent	413	67.5
Others	69	11.3
Family income monthly (n=4 04)		
< 700	128	31.7
700 – 1600	158	39.1
> 1600	118	29.2
Mean ± SD	1385.03 ±1316.50	
Money sent for students		
Never sent	37	6.0
Every semester or yearly	125	20.4
Monthly	247	40.4
Families living in the vicinity	203	33.2
Money sent enough (n =575)		
No	299	48.8
Yes	276	45.1

5.3. Reported sexual history, reasons for sexual intercourse and substance use of AAU, study subjects, 2004.

Among the total respondents 212(34.6%) had a boy friend and 158(25.8%) reported that they were sexually active .The mean age at first intercourse was 18.75 ± 1.98 years. Of these who reported to be sexually active the majority 125 (79.1%) had started sexual intercourse at the age of 24 years or more.

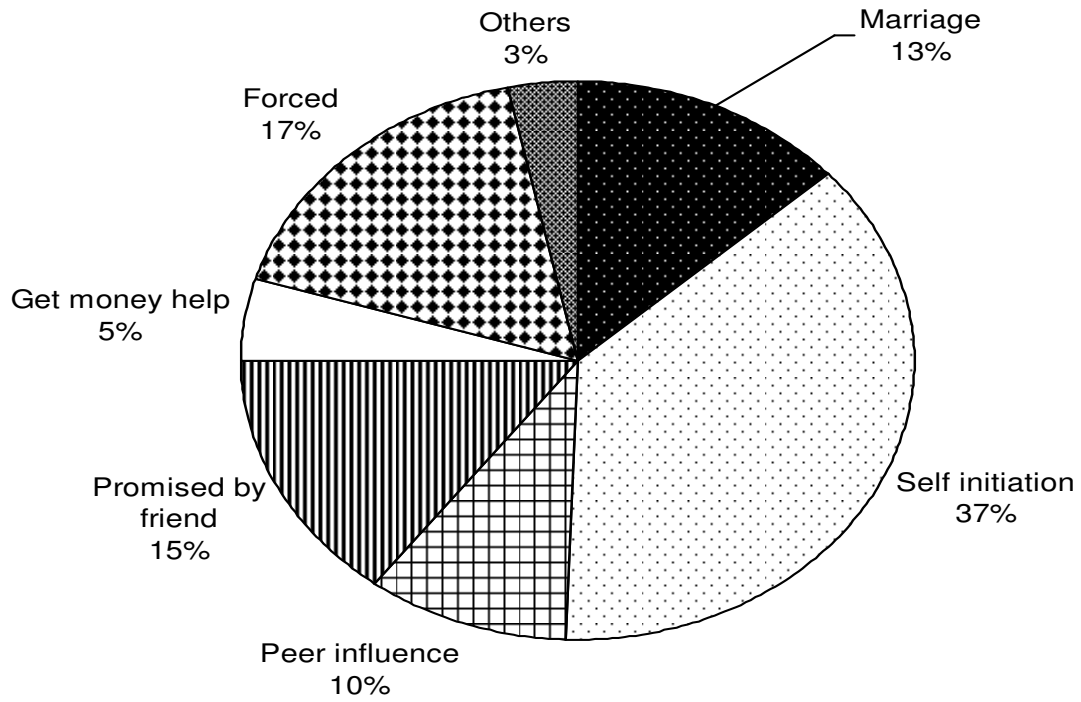
One hundred thirty five (22.1%) of the respondents reported that they drink alcohol and 49 (8.0%) reported that they chew khat. (Table. 3)

Out of the 158 who reported that they are sexually active, 58 (37%) initiated sex due to self desire, 25(17%) started sex forced, 22 (15%) due to promise made by boyfriend, 20(13%) initiated sex due to engagement in marriage and 15 (10%) due to peer influence. The other (5%) of the respondents started sex to have money and the remaining (3%) did so for other reasons. Fig 1.

Table3. Reported sexual history and substance use of Addis Ababa university female students May, 2004 (n=612)

Character	No	%
Boy friend presence		
No	400	65.5
Yes	212	34.6
History of ever sexual intercourse		
No	454	74.2
Yes	158	25.8
Age at first sexual intercourse (n=158)		
≤ 15	7	4.4
16-23	26	16.5
≥ 24	125	79.1
Mean ± SD	18.75, ± 1.98	
Substance use		
• Alcohol		
No	477	77.9
Yes	135	22.1
• Khat		
No	563	92.0
Yes	49	8.0

Fig. 1 Reasons for sexual initiation of sexually active respondents of Addis Ababa University female students, May 2004, (n= 158)



5.4 Prevalence of sexual coercion and reported reasons of rape victims.

Life time prevalence of completed rape was 12.7 % (95% CI, 10.06, 15.33 %) and 1.8 % (95% CI, 0.74, 2.85) were raped in the last 12 months. Life time prevalence of attempted rape was 27.5 % (95% CI, 24.0, 31.0 %), and 7.4% (95% CI, 5.31, 9.48) had experienced attempted rape in the last year. Fifty eight percent (95% CI, 54.1, and 61.9) reported to experience any form harassment in their lifetime, and 41% (95% CI, 37.9, and 45.71) had experienced the harassment in the last 12 months. (Table.4.) Victims of completed rape were asked to report major reasons for becoming a victim of rape, and 30 (37%) reported that it was due to a promise given to get money ,28(34%) were raped after being battered ,14(17.3%) students reported that it was after they were drunk and 2 (2.5%)after they took other substances. Students also reported that they were raped fear of knife or other weapon shown by perpetrator. These are also victims who reported that it was by their teachers after they were promised to pass exam. (Fig.2)

When victims of rape requested about the perpetrator, 73 (93.6%), of the perpetrator were persons known by the victims. Out of students who experienced rape in their life time, 7 (9%) of the rape were completed in the rapist house, and in 45 (57.7%) it happened during day time. Seventy three (93.6%) female students, who were victims of rape, didn't tell any body and only 5 (.6.4%) victims reported to the police or legal authority, and only one was sentenced. (Table .5)

Table 4. Life time and 12 months prevalence of sexual coercion among Addis Ababa university students. May, 2004 (n=612)

Sexual coercion	life time		12 months	
	Prevalence	95% CI	Prevalence	95% CI
Completed rape	12.7 %	(10.06,15.33)	1.8 %	(0.74,2.85)
Attempted rape	27.5%)	(23.96,31.03)	7.4 %	(5.31,9.48)
Harassment	58.0%	(54.10,61.90)	41.8%	(37.90,45.71)

Fig. 2. Reported reasons of rape victims of Addis Ababa University Female students, May 2004, (n = 78)

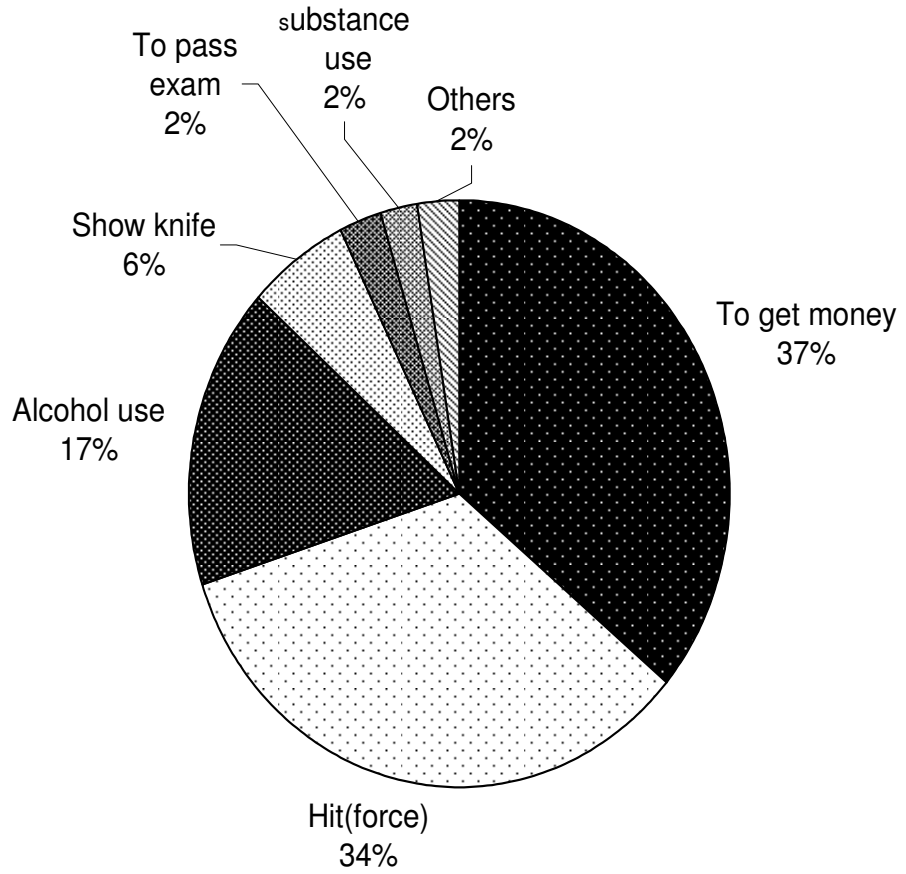


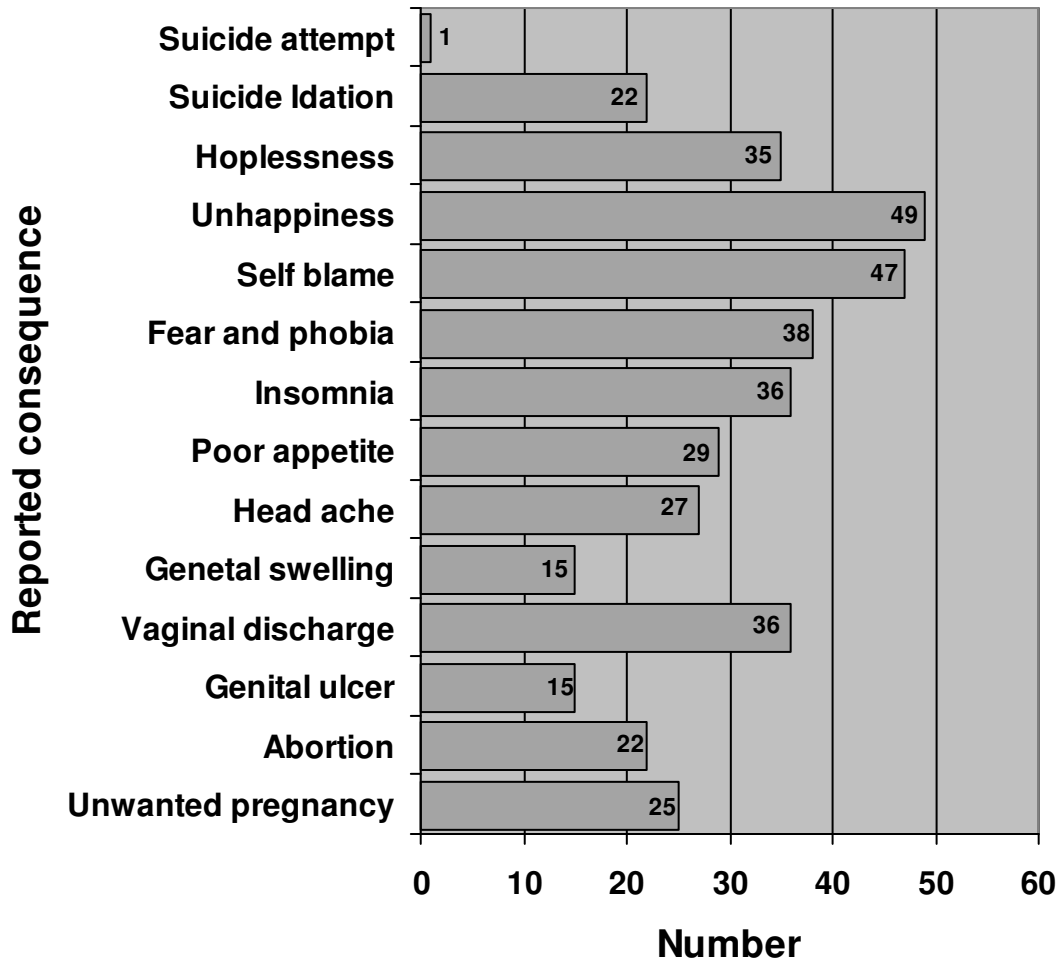
Table5. Perpetuator and conditions during rape of female students of Addis Ababa University, May 2004 (n=78)

Character	No	100 %
Perpetuator		
Known	73	93.6
Un known	5	6.4
Place of perpetuate		
In rapist house	7	9
In victims house	43	55.1
Hotel	21	26.9
Others	7	9
Time of perpetuate		
Day time	45	57.7
Night	33	40.3
Sharing the event to somebody		
No body	59	75.6
For friend	17	21.8
For relatives	2	2.6
Report to legal body		
No	73	93.6
Yes	5	6.4
Action taken by legal body taken		
No	4	80
Yes	1	20

5.5. Immediate reported outcome of complete rape.

Among the 78 girls who reported to experience completed rape, 36 (46.2%) had vaginal discharge, 25 (30.1%) unwanted pregnancy which 22 (88 %) students reported to perform an abortion. Genital swelling or genital ulcer reported by 15 (15.2%) of the victims respectively. There was a tendency of self blame, unhappiness, hopelessness, fear; phobia, suicide ideation and its attempt as psychiatric symptoms of reported to be experienced since the day of rape. Head ache, poor appetite and insomnia are other immediate outcomes reported by the students. (Fig. 3)

Fig 3. Immediate reported consequence of victims of sexual coercion Of Addis Ababa University, May 2004, (n=78).



5.6. Factors associated with completed rape in life time

The like hood of experiencing completed rape in their life was higher among students having boyfriend than girls who didn't have a boyfriend,(OR= 2.65,95%CI,1.69,4.29),on girls who were sexually active than who were not sexually active (OR= 8.07,95%CI: 4.81,13.92) , having divorced / widowed or separated guardians than married guardians (OR=2.07,95%CI:1.27,3.40).

The odds of experiencing completed rape in their life time was lesser among student living with single parents and with both parents than students living alone (OR= 0.32, 95%CI: 0.11, 0.87) and (OR=0.22, 95%CI: 0.09, 0.56) respectively. Being experiencing completed rape in their life time was lower among students for those , money sent as needed with nearly living families (OR = 0.25 , 95 % CI: 0.09 , 0.70) , and family with monthly income in birr 700 -1500 (OR = 0.44 , 95 % CI: 0.20 , 0.95) than for those students money sent not at all . (Table5 & 6)

On logistic regressions also the chance of experiencing completed rape in their life time was higher among students having boyfriend than girls who don't have a boyfriend , (OR = 2.37 , 95 % CI: 1.43,3.92) ,on girls who were sexually active than who were not sexually active , (OR = 9.95 , 95 % CI: 5.56 , 17.75), having divorced /widowed or separated guardians than married guardians (OR = 2.31,95 % CI: 1.10,4.83) . While those students living with both parents before joining university (OR = 0.45 , 95% CI : 0.22 , 0.92) , and money sent as needed with nearly living families (OR = 0.13 , 95 % CI: 0.10 , 0.89) were protected from completed life time rape than those students living alone .(Table 6 &7)

Comparisons of class performance among sexually harassed vs. none harassed of respondents was reveal that class performance was lower among sexually coerced

than non coerced with means 2.35 and 2.43 , respectively , where the means difference was 0.08, T-test 2.13 and significance 0.03.(Table8).

Comparisons of life time prevalence of rape between by socio demographic characteristics is presented on (table 6), and though there was no difference in odds of being raped among most of the socio-demographic measured.

Table6. Comparison of life time completed rape by socio demographic characteristics, substance use, having boy friend, and sexual activity of AAU, female students, May 2004 (n=612)

Characteristics	Total n =612	Raped %	Odds ratio	
			Crude (95 %CI)	Adjusted (95%CI)
Residence Campus				
Main Campus &FBE	316	15.5	1	1
Pharmacy &Technology	89	9.0	0.53 (0.24 , 1.18)	0.73 (0.32 ,1.66)
Science & ART	164	10.4	0.63 (0.35 , 1.13)	0.68 (0.37 ,1.26)
Medicine& Veterinary	43	9.3	0.55 (0.19 , 1.63)	0.69 (0.22 ,2.12)
Educational status				
2 nd year	299	13.6	1	1
3 rd year	219	12.8	0.93 (0.55 , 5.23)	0.83 (0.47 ,2.12)
≥ 4 th year	99	10.1	0.71 (0.35 , 3.54)	0.58 (0.25 ,1.31)
Age				
<20	118	10.2	1	1
20-24	453	13.2	1.34 (0.70 , 2.59)	1.33 (0.64 ,2.77)
≥ 25	41	14.6	1.51 (0.52 ,4.33	1.45 (0.42 ,4.99)
Marital status				
Married	28	21.4	1	1
Un marred	584	12.3	0.51 (0.20 ,1.31)	0.81 (0.28 ,2.27)
Religion				
Orthodox	420	13.1	1	1
Protestant/Catholic	124	12.9	0.98(0.54, 1.78)	0.90(0.47,1.72)
Muslim	47	4.3	0.29(0.07 , 1.25)	0.34 (0.07 ,1.50)
Others	21	23.8	2.07(0.73 ,5.88)	2.18(0.70 , 6.73)
Ethnicity				
Amhara	312	11.5	1	1
Oromo	124	15.3	1.38 (0.76 ,2.52)	1.36 (0.71 , 2.60)
Tigre	81	13.6	1.20 (0.58 ,2.48)	1.27 (0.60 , 2.70)
Others	95	12.6	1.10 (0.55 ,2.22)	1.11 (0.53 , 2.35)
Substance use				
Alcohol				
No	447	11.6	1	1
Yes	135	15.6	0.73 (0.43 , 1.27)	0.83 (0.45 ,1.53)
Kchat				
No	563	12.6	1	1
Yes	49	14.3	0.86 (0.37 , 2.00)	1.17 (0.46 ,2.97)
Sexual activity				
No	454	5.7	1	
Yes	158	32.9	8.07(4.81,13.92)	8.32(4.87,14.23)
Having Boy friend				
No	400	20.3	1	1
Yes	212	8.82	2.65 (1.69 , 4.29)	2.35 (1.41 ,3.90)

**Table7. Comparison of completed rape by socio-economic of parents of AAU,
female students May, 2004 (n=612)**

Characteristics	Total n = 612	Raped %	Crude OR (95 % CI)	Adjusted OR (95 % CI)
Educational status				
Father				
Illiterate	65	20.0	1	1
Complete elementary	258	12.8	0.58 (0.28 , 1.29)	1.14(0.39,3.37)
Complete high school	84	10.7	0.48 (0.19 , 1.20)	0.78(0.36,1.69)
Diploma / Degree	205	11.2	0.51 (0.24 , 1.06)	0.89(0.35,2.27)
Mother				
Illiterate	138	17.4	1	1
Complete elementary	277	13.0	0.71 (0.40 ,1.24)	2.04(0.69,6.01)
Complete high school	65	10.0	0.39 (0.14 , 1.09)	1.60(0.68,3.77)
Diploma / Degree	132	9.8	0.51 (0.25 , 1.06)	0.82(0.24,2.72)
Family size				
< 5	58	17.2	1	1
5 – 9	416	11.8	0.64 (0.30 ,1.34)	1.56(0.66,3.72)
≥ 10	2138	13.8	0.76 (0.33 , 1.76)	0.90(0.49,1.630)
Birth order				
First	149	12.8	1	1
2 nd -4 th	305	11.8	0.85 (0.44 , 1.64)	0.85 (0.44,1.64)
≥ 5 th	158	14.6	0.78 (0.44 , 1.37)	0.78(0.44,1.37)
Parents marital status				
Married	424	10.1	1	1
Divorced/Widowed/Widowers	174	19.0	2.07 (1.27 , 3.40)	2.31(1.10,4.83)
Both not alive	13	15.4	1.61 (0.34 ,7.52)	0.98(0.18 , 5.16)

Guardia before joining university				
Alone	24	33.3	1	1
Single parent	115	13.9	0.32 (0.11 , 0.87)	0.65(0.28 ,1.47)
Both parents	413	10.2	0.22 (0.09 , 0.56)	0.45(0.22 ,0.92)
Others	60	20.0	0.50 (0.17 , 1.44)	2.00(0.694 ,5.76)
Family income monthly				
≤ 650	128	115.6	1	1
700-1500	157	7.6	0.44 (0.20 , 0.95)	1.550 (0.70 , 3.41)
≥ 1600	119	10.1	0.60 (0.28 , 1.30)	0.72(0.31,1.67)
Money sent for student				
Never sent	35	22.9	1	1
Every semester or yearly	196	14.3	0.56 (0.23 , 1.36)	0.59(0.24 ,1.97)
Monthly	239	13.4	0.52 (0.21 , 1.24)	0.61(0.24 , 1.53)
Nearly living families	142	7.0	0.25 (0.09 ,0.70)	0.13(0.10 ,0.89)
Money sent enough				
No	290	13.7	1	1
Yes	276	11.6	1.70 (0.74 ,1.95)	0.812(0.41 ,1.58)

Table 8. Comparison of class performance among sexually coerced and None coerced female AAU students, May 2004 (n=612)

Characteristics	GPA Mean= 2.3105	Mean differences	T- test	Significance
Harassments				
Life time				
Yes	2.35	0.08	2.13	0.03
No	2.43			
12 months				
Yes	2.35	0.06	1.53	0.13
No	2.41			
Attempted rape				
Life time				
Yes	2.38	0.003	0.060	0.95
No	2.38			
12 months				
Yes	2.31	0.08	1.07	0.28
No	2.39			
Performed rape				
Life time				
Yes	2.44	0.069	-1.26	0.21
No	2.40			
12 months				
Yes	2.383	0.002	0.012	0.99
No	2.384			

5.7. Focus group discussions

Kotebe College of Teacher Education (KCTB)

The study area for FGD was Kotebe *College* of Teacher Education (KCTE) was set up within the Haileselesie I University in 1959 under the simple name college. Then after a study on college made with a curriculum revision in 1986, the college started a degree program in 1989 with the existing diploma program. And currently the college is running three programs: regular, summer in-service and Evening-extension .In the regular program there were 1570 students out this 426 are female.

Results of FGD (Focus Group Discussion)

Two focus group discussions (FGD) were conducted among Kotebe teachers college undergraduate students. The theme of the FGD was to distinguish the presence of sexual coercion and consequences of sexual coercion and factors contribution to it. It was conducted to obtain the necessary information to construct the quantitative questionnaire and to supplement the finding. The FGD covers a range of questions related to sexual coercion and sexuality.

Presence of sexual coercion

Boys responded that one of the reasons for rape was male dominance and both groups agreed that girls' clothing style, the way of act and being adolescent by itself (which makes attractive) leads to being raped.

According to female participants the most common cause of rape was being cheated by their boyfriends. This was explained by a girl saying some boys start by claiming that they are in love with a girl and is usually supported by his friends

and the girl's friends. If his friends or her friends support the friendship, they usually insist her to "treat" him (to be his girlfriend), so that to protect him from academic failure, and such communication usually results in rape.

Both group agreed that there was harassment of female students in the college. The boys responded that usually girls with low academic performance were more prone to be, harassed because they usually go or communicate with lots of men instead of being in library. The girls responded that harassment was performed both by male students and teachers.

Consequences of coercion

Girls responded that the serious consequences of sexual coercion were poor academic performance that can go up to dismissal; a 2nd year female student gave an example, that there was one girl a year before who was dismissed after being sexually coerced.

Both groups agreed that rape leads to different problems out of which, unwanted pregnancy, HIV/AIDS, psychological problem, unemployment suicide ideation and Suicide attempt were few explained outcomes of sexual coercion.

Common factors contributing for sexual coercion

Girls responded that there is no protective body or place to whom to report if rape or other coercions occur on girls. A girl explained and almost all supported those male teachers and students took the advantage of “helping of female students with academic issues” for sexual coercion. They claim that more than 95% of male (teachers or students) took it as an advantage to help them contact with a girl they wanted, and usually results in sexual coercion.

Boys agreed that one of the factors for coercion to be is the greater physical power over a female they have. A boy responded that boys rape as a revenge and some members of FGD discussants supported if girl refuses for the question of being a girlfriend. The boys also claim that the girls dressing, hair style, attraction and response to discussions all predispose for rape. There are also boys who claim that alcohol consumption for sex with a girl assumed to be in love.

Prevention

As a method of prevention both girls and boys suggested the following: - Giving education on behavioral change for the community. There should be a commitment by the government in improving and implementing the punishment on rapists (perpetuator). There should be a control system on provocative video showing rooms, Khat chewing areas, and other substance uses. Giving sex education for both boys and girls (students) against rape at earlier ages. Avoiding discrimination and stigmatization of victims which may help victims to be open and seek help.

6. Discussion

The lifetime prevalence rate of completed rape among female AAU, female students was 12.7% which is comparable to a study done in America among college women reported to be 15%. (29)

Though our finding of completed rape is lower compared to others, but our finding of attempted rape is consistent to other cross-national study done in Canada, Korea, New Zealand, United Kingdom and the US ranging between 19 and 27.5% being the victim of a completed or attempted rape in their lifetime (5, 6).

Our finding of completed rape is lower to a study done in USA, Washington State of 3128 respondents of girl's grades 8, 10 and 12, which were 23% and a study on 1992 in Costa Rica a retrospective survey of university student 32% (24, 25)

Our finding of completed rape 12.7% and attempted rape 27.5%, higher from a study conducted in Malaysia in 1996 on paramedical students <18 yrs 8% of women report sexual abuse and from a study of 450 school girls in Jamaica age 13-14 years old which were 13% attempted rape and 4% completed rape, this could be our subjects are older than this age group and exposed to situation like having boy friends which was one of the risk factor. (18, 26)

Our finding of completed rape and attempted rape is higher compared on similar studies in Ethiopia on high schools studies which were 5% and 10% in Addis Ababa high school and 8.8% and 11.5% in Debarq Western Showa. (50,51) this

can be explained the more the girls grow older in age and will have boy friends and exposed for rape as reported by FGD.

Among the sexually active group the 15.8% started sex forced which is lower compared to study conducted in South Africa which is between 28 and 30%. (20) It is also lower from a prospective study of dating relationship in USA were 23% of girls reported being sexually assaulted. (23)

Forced sexual intercourse was compared during initiation of sexual activity to similar study in Addis Ababa high school on sexual violence and Attitude of Students, 22.9% which was lower .(50). Our finding is a bit higher compared to 14.7% of forced intercourse among high schools students in Harar. (55) These finding shows using force is high event in sexual initiation in our country.

In our study 58% of AAU female students encounter harassment, which is lower than the study conducted in Addis Ababa high school students which was 74.3%⁽¹⁴⁾ In our study 93% of the perpetuates of rape were known by the victims which is a bit higher from a study conducted in Addis Ababa high school were 70% (50)and comparable to most literatures which is around 80% (31,32,33).

Our study has assessed some factors which are stated as contributing factors for sexual coercion in the literature. One of the stronger factors stated which predispose to sexual violence is male honors (masculinities linked to dominance), cultural and poor monitoring parents , children are vulnerable to be victims.

(40,56) In the present study which was proofed by positive association of living with both parents, and monitored by parents as a protective the FGD male chauvinism and culture.(Table7)

Among those who were raped and not raped for factors living with single or both parents having divorced family and having nearly living families with money support as needed were statistically significant.

The findings are comparable to a study conduct in Addis Ababa High school. (50) The possible explanation was those who have a stable family and parents where by they monitor their children are less likely to find themselves in situation, where unwanted sexual activity might occur and they may also be less likely to find themselves with peers who would perpetuate such an act. (34)

False promise (get money help and to pass exam), physical force (being battered and show knife) contribute 36% and 31% of rape incidents in the present study compared to Addis Ababa high school false promise was 47% and physical force was 45.7%. (50) Alcohol and substance use involved in 17% compared to Addis Ababa high school study contribute 43% of rape incidents, which show a role of alcohol and substance use in sexual behavior of adolescents which alter responsible sexual decision making. (50) The finding show that there is a significant association between having boyfriend and rape, this might be explained by exposure to environment which predispose them to such offensives and this is

also supported on the finding that 93% of the perpetrators are individuals known to the victim which is comparable to a study of USA, Peru and Malaysia perpetrators are known in 78%, 60% and 68% of cases respectively. (33) Our finding was also comparable to Addis Ababa high school students. (50)

This finding has important implication that rape is common among those who had intimate relationships which signifies less responsible sexual decision making among partners. This finding goes beyond to overall sexual culture where by sexual coercion among intimate partners is not considered as rape.

The study also signifies the health consequence of rape .Among rape victims prevalence rate of un wanted pregnancy was 25% which is similar with a study in Mumbai reported 20% .(38) Our finding was a bit higher from studies in USA and Mexico rape crisis center reported 5% and 15-18% respectively .(11) This finding is also a bit higher from Addis Ababa high school student on sexual violence study which was 16 %, (50) The possible explanation is there is no rape crisis center in the country with available prophylaxes like emergency contraceptives.

In our study 22 or 88% of unwanted pregnancy reported followed by abortion which is higher compared to Addis Ababa high school study were 13.9%. (50)

Psychological impact of rape was reported in significant proportion of rape victims which signifies the subsequent of trauma victims face after the assault.

Suicide ideation reported in 28.2% which is comparable to America study where 20% of Suicide ideation was reported. (32) Our finding is higher compared to two studies in Ethiopia on high school students 8% and 15.8%. (50,51). Suicide attempt was reported by 1.3% which is less compared to Addis Ababa high school study 5.5% (50). Though not specified about the causes a significant proportion of victims reported vaginal discharge and genital swelling and ulcer after rape which also warrants a possible transmission of STD including HIV. This generally includes the role of forced sex on these hazards.

Lifetime harassment is significantly associated with class performance, which is supported by FGD. A study on high school students in Addis Ababa and Debarke also reported 13.9% and 21.1% examination failure of sexually violated victims respectively. Unwanted pregnancy, HIV/AIDS are the major consequence as reported by FGD, which shows how the student's population is aware of health consequences of coercion. This is a good point for intervention measures where the students are aware of hazards of irresponsible behavior. As it was reported there are only a few number of victims reported to legal authority and only one was sentenced.

This generally shows that how lenient is the legal system and the society didn't dare to report for fear of social stigma which has a tendency to make a situation worse. The review of the penile code of Ethiopian also shows discrepancy with some literatures on issues of marital rape, date rape and rape between the same sexes. This study signifies that the problem of rape is sustained and aggravated because of stigma, social conformant and poor enforcement of the law.

7. Strength and Limitation of the study

7.1 Limitations

1. Adequate comparison could not be made since there are no similar studies in many territory educational level institutions.
2. Outcome is assessed only by the report of respondents.
3. Under reporting of rape was inevitable since study deals on sensitive issues.

7.2. Strengths

1. The use of FGD and relatively large sample are believed to provide reliable and accurate findings.
2. The study is done on a population who come from all regions of the country and the result can be generalized to all university students of the country.

8. CONCLUSION

As the findings of this study indicate the prevalence of life time rape, attempted rape and harassment was 12.7%, 27.5% and 58.0% respectively. The 12 month's rate of rape, attempted rape and harassment was 1.8%, 7.4%, and 41.8% respectively which shows female adolescents even in higher educational level are at high risk of sexual coercion.

Sexual coercion was shown to contribute to health consequences adolescents' face nowadays including unwanted pregnancy, illegal abortion, STDs and psychological disturbances.

The factors which contribute to rape includes, false promise like to get money help and to pass exam, physical force (being battered and show of knife shown), and substance use. Beside these parental factors and lack of understanding and communication between opposite sex like boyfriend, poor law enforcement was shown to contribute the problem.

The culture, male dominance and stigma on the victims sustain and aggravate rape in the society.

9. RECOMMENDAION

Based on these findings it is recommended that:

1. Education should be given for students starting from elementary by including in the curriculum on: - sex, how to challenge traditional gender norms and to create new models of healthy relationship.
2. Awareness for the society should be given through IEC.
3. Providing for the needs of victims: introducing rape crisis centers in health institutions and prepare a standardized treatment for STDs, including anti-retroviral prophylaxis, emergency contraception and counseling to alleviate psychological problems.
4. Implementing the existing legal punishment: - by raising the awareness of policy-making bodies about the prevalence and consequent of sexual coercion.
5. Empowering women and girls: - which includes, strengthen women in leadership, decision making, and increase women's access to control over economic resources.
6. Encouraging the victims to report to legal bodies.

10. References

1. WHO. Putting women first Ethical and safety recommendation for research on domestic violence against women: Geneva Switzerland, 2001.
2. United Nation General Assembly. Declaration on the Elimination of Violence Against women: 1993.
3. WHO. Violence against women: Aphordis health issue, Geneva, WHO, 1997.
4. Population Reports. Ending Violence against women: 2003 series L, Number 11.
5. Heise, L, Pitanguy J. and German .A. Violence against women: the hidden health burden, Soc. Sci and Med, 39: 233-245, 1994.
6. Christina EE. Gender inequality of health in third world. Soc Sci and Med, 39 (9): 1237-1247, 1994.
7. Heise L. Violence against women: The missing agenda. In Marjorie AK, Judith J, Jill G. editors .The health of women: global perspective west views press .25-36, 1992.
8. World health organization. The reproductive health of adolescents: A strategy for action. A joint WHO/UNFPA/UNICEF statement WHO, Geneva , 1989
9. The health of adolescents and youth: A global overview: World health statistics quart 35, 256-266, and 1985.
10. Friedman HL, Belsey MA. Ferguson J. Adolescents health: Promise and paradox. Woman and children in developing countries.
11. Heise, L, Lori et al. Violence against women: A neglected public Health issue in less developed countries, Soc. Sci and Med, 39. No 91 PP, 1165-1179, 1994.

12. Heise, L, Moore, K and Toubia, N. Sexual coercion and women's Reproductive health: A focus on research, New York: population council 1995.
13. Ministry of health (MoH). Family Health department Information Education Communication Manual on Family Programmes. Addis Ababa.1998.
14. Global forum for health research. Mapping a global pandemic: The University of Melbourne, 2000.
15. Garcia- Moreno. Violence against women . Gender and Health Equity working paper series No 99, Cambridge. Harvard Center for population and development studies, Harvard school of public Health. 1999.
16. Handwerker, W. Gender power differences between parents and high-risk sexual behaviors by their children: *Journal of women's Health*, 2: 310-316, 1993.
17. Schei, B, and Barketeig L. S. Gynecological impact of sexual and physical abuse by spouse: A study of random sample of Norwegian women. *British Journal of Obstetrics and Gynecology*, 96, 379-1383. 1989.
18. Walker et.al. Adults Health Status of women HMO member with history of childhood abuse and neglect: *American Journal of medicine*, 54: 658-664. 1992.
19. M. A. Koenig et al. coerced sex in rural Uganda: Prevalence and press associated risk factors, *Article in soc. Sci & medicine*, 2003.
20. Jewkes. R. Overview of sexual Violence against women in South Africa: Paper presented at consultation on sexual violence against women, 18-20 May, 2002.
21. Global forum for health research. Eliminating sexual violence against women: The University of Melbourne, 2000.
22. Heise L, Kanti M, Nahid T. Sexual coercion and women's reproductive health: A focus on research. New York, population council.1995.

23. Judith RV, Linda RK, William LH. Risk factors associated with date rape and sexual assault of adolescent girls. *Journal of Adolescence*: 18:289-306, 1995.
24. Stock. J .I, et al: Adolescent pregnancy and sexual risk-taking among sexually abused girls. *Family planning perspectives*. 29, (5): 200-203, 227, 1997.
25. krugman.S, Mata, L .and Krugman, R. Sexual abuse and corporal punishment during Childhood. A pilot retrospective survey of University students in Costa Rica. *Pediatrics* 90: P(2):157-161.1992.
26. Singh, H.S, et al: Prevalence of childhood sexual abuse among Malaysian paramedical students. *Child abuse and Neglect* 20(5): 487-492.1996.
27. Tshumper,A, et al . Sexual victimization in adolescent girls (age 15-20 years) enrolled in post-mandatory schools or professional training programmes in Switzerland . *Acta Paediatrica* 87 (2):212-217.1998.
28. Koss MP, Harvey M. *The rape victim: clinical and community Approaches to treatment*. Beverly Hills, Caliph .Sage publications, 1991.
29. Koss MP, Hidden rape: sexual aggression and victimization in a national sample of student in higher education. In: Burgess AN, Ed, *Rape and sexual Assault*. New York, NY: Garland publishing: 2, 3-25, 1988.
30. Cheryl R. Parental response to extra familial child sexual assault. *Child abuse and neglect*, 14:113-120, 1990.
31. Advocates for youth. *Healthy futures in jeopardy: Young people and violence*, 1994.
32. Schwartz IL. Sexual violence against women: prevalence, consequence, societal factors and prevention. *Am J pre. med.* 7(6): 363-371,1991.
33. Heise L. Fact sheet on Gender Violence. IWTC/UNIFEM resource centers, 1992.

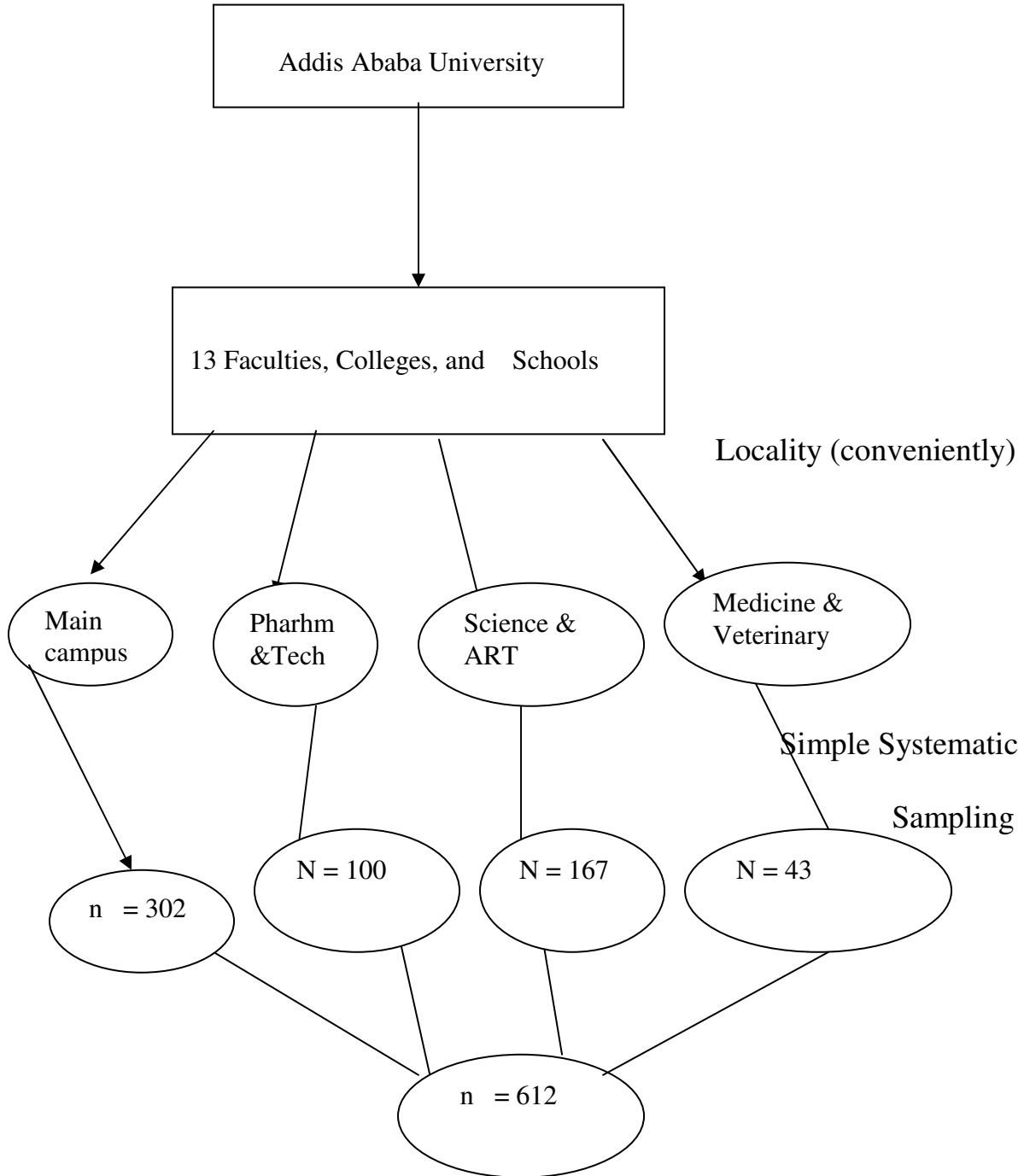
34. Judith RV, and et al Risk factors associated with date rape and sexual assault of adolescent girls. *Journal of Adolescence*, 18:289-306, 1995.
35. Small SA. Daniel K. Unwanted sexual activity among peer during early and middle adolescence: Incidence and risk factors. *Journal of marriage and family*: 55:941-952, 1993.
36. Council of scientific affairs. American Medical association. Violence against women. *JAMA* 267(23):3184-3189,1992.
37. Sandy P.R. The Socio-cultural context of rape. A cross cultural study. *J.Soc .Issues* 37(4), 5, 1981.
38. Gordon. P, and Crehan K. Dying of sadness: Gender, Sexual violence and the HIV Epidemic. 12:53 P , 2000.
39. Advocates for youth, International programmes department. The Worlds youth at risk: Violence and its consequence. *Passages*, 13(3): 1-4, 1995.
40. Trace P. Charley A. Sexual assault. Victim support work handbook. Justice institution of B.C/1989.
41. Kendall-Tackett. K.A, and et al . Impact of sexual abuse on children: A review and synthesis of recent empirical studies, *Psychological Bulletin* 113(1), 164-180, 1993.
42. Beitchman, J.H, and et al . A review of the long –term effects of child sexual abuse. *Child abuse and neglect*.16:101-118.1992.
43. Beitchman, J.H, and et al . A review of the short-term effects of child sexual abuse. *Child abuse and neglect*.15: 537-556.1991.
44. Carrillo, R. Battered dreams: Violence against women as an obstacle to development. New York, United Nations development fund for women, 38.P.4992.
45. Finkelhor, D and Brown, A. The traumatic impact of child sexual abuse: A conceptualization. *American Journal of Orthopsychiatry*.5 (4):530-541.1985.
46. Watts,C. and Zimmer, C. Violence against women I: global scope and magnitude . *The lancet*. Vol. 359.2002.

47. Warsaw, R. I never called it rape: Report on recognizing, fighting, and surviving date and acquaintance rape. New York, Harper and row publishers, 1988.
48. Romito, P. and Gerin, D. Asking patients about violence: a survey of 510 women attending social and health services in Trieste, Italy. *Soci Sci & med.* 54, 1813-1824, 2002.
49. Heise , L. and et al . Violence against women: A neglected public health issue in less developed countries. *Soc Sci & med.* 39(90).1665-1775, 1994.
50. Mulugeta E, Kassaye M, and Berhane Y. Prevalence and outcome of sexual violence among high school students in Addis Ababa and western Showa: *Eth. Me. J*, 1995, 167-173.
51. Worku A, and. Addisie M. Sexual Violence among female High school students in Debark, Northwest Ethiopia: *East African medical Journal*, 1 96-99 2002 .
52. Molla. M, Ismail S, Kumie A, Kebede F. Sexual violence among female street Adolescents in Addis Ababa: *Eth. J. Health Dev*, 2000, 119-127.
53. Haileselasie.I. The problem of Girl (Child) prostitution in Addis Ababa: United Nation conference Hall, Unpublished document, Sep. 30, 1999
54. MoH. Violence against women at selected health institution. Women's Affairs department Ministry of Health unpublished document .1997.
55. Bisrat F. KAP study in Harar town high school students (Master Thesis) Addis Ababa University, 1992.
56. Tadiwos.S. Rape in Ethiopia. Reflection: Documentation of panos Ethiopia: Forum on Gender. Unpublished document, 2000.
57. Lisa B. Adolecnt reproductive health in Ethiopia. An investigation of needs,current police and programmes (unpublished document)
58. Children, youth and family welfare organization. Convection on Rights of the child, Addis Ababa, Dec.1993.

59. Penal code of the Empire of Ethiopia of 1957. "Negarit Gazata,"
Extraordinary issue 1957,179 Addis Ababa..

11. Annexes

Schematic presentation of sampling procedure



A questionnaire prepared to determine the prevalence and consequences of sexual coercions among female adolescents' students.

Addis Ababa 2003 QUESTIONNAIRE

CITY Addis Ababa

REGION Addis Ababa

SITE: Addis Ababa University female students

INTRODUCTION: My name is _____. I am working with a research entitled, Assessment of sexual coercion Among Female Adolescent Students .You have been selected to participate in this study. The finding of the study will be used for better planning & intervention of sexual violence against women in Ethiopia. Therefore, I am requesting you to fill this questionnaire by yourself. There are no rights or wrong answers. The question includes very personal questions and difficult to talk about, but many women have found it useful to have the opportunity to talk. Your response is completely confidential. You do not need to write your name and will never be used in connection with any of the information you give me. You are kindly requested to answer every question and you may stop filling the form at any time you want to. However, your honest answers to these questions will help us better understand what people think, say and do about sexual coercion / violence on female adolescents. According to the questions it is allowed to have more than one answer.

We would greatly appreciate your help in responding to these questions. The survey will take about thirty minutes to fill this questionnaire.

Would you be willing to participate? [X]

Yes -----

No -----

If you are willing after responding to the questionnaire insert post put it in prepared box

**A questionnaire prepared to determine the prevalence consequences of
Sexual coercions among female adolescents.**

**For multiple choice questions circle the answer in front, for short answers write on the space
provided, thanks for your cooperation**

Part I Section on socio-demographic data

No.	Question and filter	Alternative Choices for Responses	Code
Q101	How old are you	_____ Year / Month	
Q102	What is your religion?	1. Orthodox 2. Catholic 3. Protestant 4. Muslim 5. No affiliation 6. Others specify -----	
Q103	Where do you live?	1. In campus 2. Out side campus	
Q104	Have you ever married?	1. Yes 2. No If your answer no go to no, 106	
Q105	Are you presently married?	1. Yes 2. No	
Q106	In which Faculty or Department are you learning?	Faculty----- Department -----	
Q107	In which class year are you?	__ Year	
Q108	What is your ethnicity?	1. Amhara 2. Oromo 3. Gurage 4. Tigre 5. Others	

Q109	Where is your original of residence?	1. Region -----		
		2. District city -----		
Q110	Have you ever used substance like?	Usually	Sometimes	
		Yes	No	Yes
				NO
	1. Alcohol	1	2	1
	2. Chat	1	2	1
	3. Drug like cannabis	1	2	1
	4. cigarettes	1	2	1
	5. Other specify ----- -----			

Part II Family history

No.	Question and filter	Alternative Choices for Responses	Code
Q201	What is your parents' educational status?		
	A. Your father	1. Illiterate 2. Read and write (but not formal education) 3. The highest grade completed ___ If University write 12+year ____	
	B. Your mother	1. Illiterate 2. Read and write 3. The highest grade completed ___ If University write 12+year ___	
Q202	What is your family size with you?	1. Brothers ___ 2. Sisters ___	

Part III Section on sexual history

No.	Question and filter	Alternative Choices for Responses	Code																																			
Q301	Do you have a regular boyfriend presently?	1. Yes 2. No																																				
Q302	Have you ever had sexual intercourse?	1. Yes 2. No If your answer is no for Q302 skip to Q305																																				
Q303	If response to Q.302 is yes how did you start sexual intercourse?	<table style="width: 100%; border-collapse: collapse;"> <thead> <tr> <th></th> <th style="text-align: center;">No</th> <th style="text-align: center;">Yes</th> </tr> </thead> <tbody> <tr> <td>1. In a marriage</td> <td style="text-align: center;">1</td> <td style="text-align: center;">2</td> </tr> <tr> <td>2. Personal desire</td> <td style="text-align: center;">1</td> <td style="text-align: center;">2</td> </tr> <tr> <td>3. Peer pressure</td> <td style="text-align: center;">1</td> <td style="text-align: center;">2</td> </tr> <tr> <td>4. Promising word from Partner</td> <td style="text-align: center;">1</td> <td style="text-align: center;">2</td> </tr> <tr> <td>5. For financial purpose</td> <td style="text-align: center;">1</td> <td style="text-align: center;">2</td> </tr> <tr> <td>6. For passing examination</td> <td style="text-align: center;">1</td> <td style="text-align: center;">2</td> </tr> <tr> <td>7. By force against Your consent</td> <td style="text-align: center;">1</td> <td style="text-align: center;">2</td> </tr> <tr> <td>8. Others Specify -----</td> <td></td> <td></td> </tr> </tbody> </table>		No	Yes	1. In a marriage	1	2	2. Personal desire	1	2	3. Peer pressure	1	2	4. Promising word from Partner	1	2	5. For financial purpose	1	2	6. For passing examination	1	2	7. By force against Your consent	1	2	8. Others Specify -----											
	No	Yes																																				
1. In a marriage	1	2																																				
2. Personal desire	1	2																																				
3. Peer pressure	1	2																																				
4. Promising word from Partner	1	2																																				
5. For financial purpose	1	2																																				
6. For passing examination	1	2																																				
7. By force against Your consent	1	2																																				
8. Others Specify -----																																						
Q304	What was your age at fist sexual intercourse?	__ __ Yrs																																				
Q305	The following acts may happen to many women, did some one ever made to you? 1. Un wanted sexual act such as - - Verbal jokes /asked to have sex 2. Face unwelcome touching on your genital or breast etc. 3. Face forced sex that you escaped 4. Faced forced sex without your will 5. Faced forced sex that made you frightened and degrading	<table style="width: 100%; border-collapse: collapse;"> <thead> <tr> <th></th> <th colspan="2" style="text-align: center;">Lifetime</th> <th colspan="2" style="text-align: center;">Last 12 months</th> </tr> <tr> <th></th> <th style="text-align: center;">Yes</th> <th style="text-align: center;">No</th> <th style="text-align: center;">Yes</th> <th style="text-align: center;">No</th> </tr> </thead> <tbody> <tr> <td>1. Un wanted sexual act such as - - Verbal jokes /asked to have sex</td> <td style="text-align: center;">1</td> <td style="text-align: center;">2</td> <td style="text-align: center;">1</td> <td style="text-align: center;">2</td> </tr> <tr> <td>2. Face unwelcome touching on your genital or breast etc.</td> <td style="text-align: center;">1</td> <td style="text-align: center;">2</td> <td style="text-align: center;">1</td> <td style="text-align: center;">2</td> </tr> <tr> <td>3. Face forced sex that you escaped</td> <td style="text-align: center;">1</td> <td style="text-align: center;">2</td> <td style="text-align: center;">1</td> <td style="text-align: center;">2</td> </tr> <tr> <td>4. Faced forced sex without your will</td> <td style="text-align: center;">1</td> <td style="text-align: center;">2</td> <td style="text-align: center;">1</td> <td style="text-align: center;">2</td> </tr> <tr> <td>5. Faced forced sex that made you frightened and degrading</td> <td style="text-align: center;">1</td> <td style="text-align: center;">2</td> <td style="text-align: center;">1</td> <td style="text-align: center;">2</td> </tr> </tbody> </table> <p>If your answer for Q305, 4 is no. Skip to Q310</p>		Lifetime		Last 12 months			Yes	No	Yes	No	1. Un wanted sexual act such as - - Verbal jokes /asked to have sex	1	2	1	2	2. Face unwelcome touching on your genital or breast etc.	1	2	1	2	3. Face forced sex that you escaped	1	2	1	2	4. Faced forced sex without your will	1	2	1	2	5. Faced forced sex that made you frightened and degrading	1	2	1	2	
	Lifetime		Last 12 months																																			
	Yes	No	Yes	No																																		
1. Un wanted sexual act such as - - Verbal jokes /asked to have sex	1	2	1	2																																		
2. Face unwelcome touching on your genital or breast etc.	1	2	1	2																																		
3. Face forced sex that you escaped	1	2	1	2																																		
4. Faced forced sex without your will	1	2	1	2																																		
5. Faced forced sex that made you frightened and degrading	1	2	1	2																																		
Q306	If encountered forced sex, where was the place?	1. In my home 2. In his home 3. Hotel 4. Dorm 5. Others specify-----																																				
Q307	If encountered forced sex, at what time of the day was happened?	1. Morning 2. Afternoon 3. Evening 4. Late night																																				
Q308	If encountered forced sex what is the mechanism used to force you?	<table style="width: 100%; border-collapse: collapse;"> <thead> <tr> <th></th> <th style="text-align: center;">Yes</th> <th style="text-align: center;">No</th> </tr> </thead> <tbody> <tr> <td>1. Hit you</td> <td style="text-align: center;">1</td> <td style="text-align: center;">2</td> </tr> <tr> <td>2. Point a knife</td> <td style="text-align: center;">1</td> <td style="text-align: center;">2</td> </tr> </tbody> </table>		Yes	No	1. Hit you	1	2	2. Point a knife	1	2																											
	Yes	No																																				
1. Hit you	1	2																																				
2. Point a knife	1	2																																				

		3. Point a gun 1 2 4. Made you drink 1 2 5. Gave you drug with alcohol 1 2 6. Smoked drug on you 1 2 7. For passing Examination 1 2 8. Support with money 1 2 9. Others specify -----	
Q309	If encountered forced sex in your life time, who was the perpetrator?	1. Husband 2. Boyfriend 3. Father 4. Brother 5. Grand father 6. Relatives 7. Brothers friend 8. Mothers friend 9. Sisters friend 10. Fathers friend 11. Neighbor 12. Teacher 13. Student 14. Stranger 15. Health professional 16. Priest 17. Other Specify -----	
Q310	If you have ever been forced into unwanted sexual intercourse and escaped, how was your mechanism of escape?	1. By crying (somebody arrived) 2. Escaped 3. By fitting 4. By giving promising word (cheating) 5. Other specify -----	
Q311	Do you know of student girls who are raped?	1. Yes 2. No	
Q312	If Q315 is yes, how many?	_____	
Q313	Who was the perpetrator?	1. Her husband 2. Her boyfriend 3. Her father 4. Her brother 5. Her grandfather 6. Her brother fiend 7. Her mother fiend 8. Her sisters friend 9. Her fathers friend 10. Neighbors 11. Teacher 12. Student 13. Unknown 14. Relatives 15. Priest	

	16. Health professional	
	17. Other Specify -----	

Part IV Consequence of coercion

No.	Question and filter	Alternative Choices for Responses	Code																								
Q401	<p>With whom did you share the event after you had unwanted sexual intercourse?</p> <p>More than one answer is possible.</p> <p>If unwanted sexual intercourse was not encountered on you can pass to question no. 408?</p>	<table style="width: 100%; border-collapse: collapse;"> <thead> <tr> <th></th> <th style="text-align: center;">No</th> <th style="text-align: center;">Yes</th> </tr> </thead> <tbody> <tr> <td>1. Nobody</td> <td style="text-align: center;">1</td> <td style="text-align: center;">2</td> </tr> <tr> <td>2. A friend</td> <td style="text-align: center;">1</td> <td style="text-align: center;">2</td> </tr> <tr> <td>3. Sister</td> <td style="text-align: center;">1</td> <td style="text-align: center;">2</td> </tr> <tr> <td>4. Brother</td> <td style="text-align: center;">1</td> <td style="text-align: center;">2</td> </tr> <tr> <td>5. Parents</td> <td style="text-align: center;">1</td> <td style="text-align: center;">2</td> </tr> <tr> <td>6. Health Professionals</td> <td style="text-align: center;">1</td> <td style="text-align: center;">2</td> </tr> <tr> <td>7. Other / Specify -----</td> <td></td> <td></td> </tr> </tbody> </table>		No	Yes	1. Nobody	1	2	2. A friend	1	2	3. Sister	1	2	4. Brother	1	2	5. Parents	1	2	6. Health Professionals	1	2	7. Other / Specify -----			
	No	Yes																									
1. Nobody	1	2																									
2. A friend	1	2																									
3. Sister	1	2																									
4. Brother	1	2																									
5. Parents	1	2																									
6. Health Professionals	1	2																									
7. Other / Specify -----																											
Q402	If yes, did you report the event to the legal body after the event?	1. Yes 2. Not reported																									
Q403	If your answer is yes to whom did you report?	1. To police 2. To kebele 3. To court 4. Other legal bodies																									
Q404	Is there any action taken to the perpetrator?	1. Sentenced 2. Financial penalty 3. Forced to marry 4. Other /Specify/-----																									
Q405	If, for question no.404 is not reported to any body, why you kept the secret?	<table style="width: 100%; border-collapse: collapse;"> <thead> <tr> <th></th> <th style="text-align: center;">No</th> <th style="text-align: center;">Yes</th> </tr> </thead> <tbody> <tr> <td>1. Do not know What to do</td> <td style="text-align: center;">1</td> <td style="text-align: center;">2</td> </tr> <tr> <td>2. Afraid of parents</td> <td style="text-align: center;">1</td> <td style="text-align: center;">2</td> </tr> <tr> <td>3. Afraid the public Reaction</td> <td style="text-align: center;">1</td> <td style="text-align: center;">2</td> </tr> <tr> <td>4. Afraid of the Perpetuator</td> <td style="text-align: center;">1</td> <td style="text-align: center;">2</td> </tr> <tr> <td>5. The legal body is not helpful</td> <td style="text-align: center;">1</td> <td style="text-align: center;">2</td> </tr> <tr> <td>6. Others / Specify/ -----</td> <td></td> <td></td> </tr> </tbody> </table>		No	Yes	1. Do not know What to do	1	2	2. Afraid of parents	1	2	3. Afraid the public Reaction	1	2	4. Afraid of the Perpetuator	1	2	5. The legal body is not helpful	1	2	6. Others / Specify/ -----						
	No	Yes																									
1. Do not know What to do	1	2																									
2. Afraid of parents	1	2																									
3. Afraid the public Reaction	1	2																									
4. Afraid of the Perpetuator	1	2																									
5. The legal body is not helpful	1	2																									
6. Others / Specify/ -----																											
Q406	<p>Did you have any of the following problems after the unwanted sexual intercourse?</p> 1. Pregnancy 2. Abortion 3. Ulcer in the	<table style="width: 100%; border-collapse: collapse;"> <thead> <tr> <th></th> <th style="text-align: center;">Yes</th> <th style="text-align: center;">No</th> </tr> </thead> <tbody> <tr> <td></td> <td style="text-align: center;">1</td> <td style="text-align: center;">2</td> </tr> <tr> <td>1. Pregnancy</td> <td style="text-align: center;">1</td> <td style="text-align: center;">2</td> </tr> <tr> <td>2. Abortion</td> <td></td> <td></td> </tr> <tr> <td>3. Ulcer in the</td> <td style="text-align: center;">1</td> <td style="text-align: center;">2</td> </tr> </tbody> </table>		Yes	No		1	2	1. Pregnancy	1	2	2. Abortion			3. Ulcer in the	1	2										
	Yes	No																									
	1	2																									
1. Pregnancy	1	2																									
2. Abortion																											
3. Ulcer in the	1	2																									

	genitalia 4. Unusual discharge from genitalia 5. Swelling around the genitalia 6. Others Specify -----	1 1	2 2	
Q407	Which of the following did you experience after forced sex in your lifetime? 1. Often have head aches 2. Poor appetite 3. Bad sleep 4. Easily frightened 5. Blame yourself for what happened 6. Hate others for What has happened on you 7. Feel unhappy 8. Feel that you are a worthless person 9. Thought of ending of your life 10. Thought better to die 11. Other specify -----	Yes 1 1 1 1 1 1 1 1 1 1 1	No 2 2 2 2 2 2 2 2 2 2 2	
Q408	What is your last semester grade result?	_ _ . _ _ GPA		

Thanks for Your Cooperation!!

Annex. 4

Map locating the study area

Woreda 13 in Addis Ababa Region

