



Addis Ababa University
College of Business and Economics
Department of Public Administration and Development
Management

**PRACTICES AND PROSPECTS OF PUBLIC PARTICIPATION IN
LOCAL ECONOMIC DEVELOPMENT: THE CASE OF THREE
SELECTED WOREDAS IN YEKA SUB CITY, ADDIS ABABA CITY
ADMINISTRATION**

By

Girum H/giorgis Damena

June, 2018

Addis Ababa, Ethiopia

Addis Ababa University
College of Business and Economics
Department of Public Administration and Development Management

**PRACTICES AND PROSPECTS OF PUBLIC PARTICIPATION IN
LOCAL ECONOMIC DEVELOPMENT: THE CASE OF THREE
SELECTED WOREDAS IN YEKA SUB CITY, ADDIS ABABA CITY
ADMINISTRATION**

By
Girum H/giorgis

Advisor

Dr. Bikila Hurissa

A thesis submitted to the Department of Public Administration and Development Management of Addis Ababa University in partial fulfillment of the requirements for the Degree of Masters in Public Management and Policy (MPMP)

June, 2018

Addis Ababa, Ethiopia

Addis Ababa University
College of Business and Economics
Department of Public Administration and Development Management

This is to certify that the thesis prepared by Girum H/giorgis entitled “**practices and prospects of public participation in local economic development**”, which is submitted in partial fulfillment of the requirements for the Degree of Masters in Public Management and Policy (MPMP), complies with the regulations of the University and meets the accepted standards with respect to originality and quality.

Approved by Board of Examiners:

_____ Signature_____ Date_____

Advisor

_____ Signature_____ Date_____

Internal Examiner

_____ Signature_____ Date_____

External Examiner

_____ Signature_____ Date_____

Chair of Department or Graduate Programs Coordinator

Declaration

I, the undersigned, declare that this thesis is my original work and has not been presented for a degree in any other university and that all sources of materials used for the thesis have been duly acknowledged.

Declared by:

Name: _____

Signature: _____

Date: _____

Confirmed by Advisor:

Name: _____

Signature: _____

Date: _____

Abstract

The study dealt with practices and prospects of public participation in local economic development a case of three selected woredas in yeka sub city, Addis Ababa city administration. The objective of the study is to assess the participation of community's in local economic development and the outcome. The issues observed to achieve the objective were areas of community participation, institutionalization of participatory practices, substantive coordination of the actors and outcomes of these processes and activities in the selected Woredas of yeka Sub-city. Mixed approach (both Qualitative and Quantitative approach) is used. Semi-structured questionnaire is prepared. In-depth interview, focus group discussion and observation tools were developed and employed to elicit important information from the community and triangulate with secondary and questionnaire data. In general the observations of data results from various sources, the development activities are not sustainable in the sense also that the process didn't create sizeable employment to the local community. The participatory local economic development work has not been linked to small and micro enterprises. Therefore, the study concluded with the recommendation that the participatory local economic development work should maintain link between the community, the SMEs and other actors in order to engage in sustainable processes and activities of local economic development in the Sub City selected for this study.

Acknowledgement

In conducting this study there are very important individuals who contributed invaluable things that I will be regretful if I failed to forward my thanks from the bottom of my heart.

The first one is my advisor Dr. Bikila Hurisa, who has been following up my achievements and correcting the draft paper from the proposal up to the final outcome conscientiously. I can really say that without his follow up and keen advice, this result couldn't have been real. Next thanks will go to my families, my father Ato H/giorgis Damena and my mother W/ro Wossene Weldeyes for their prayer dedicated to me and moral support not only in this study but in all my life. For my leading actor Mekdes Dawit thanks from the bottom of my heart.

I am also indebted with the government officials in Addis Ababa city administration, yeka sub-city, woredas and Qetenas. All the staff members of woredas 1, 2 and 3 was my supporters in my field work and also the sub-city participatory community development office head Ato Guchi Mengiste, and other workers who have been helping me in the field work that deserved a great thanks from me. Different committee members and individuals who put their tress in this work whom I can't even remember their name correctly, they all deserves equal gratitude with others mentioned in name.

Finally I conclude my gratefulness by forwarding a piece of appreciation and thank for my friends and my classmates.

Table of Contents

Titles	pages
CHAPTER ONE.....	1
1.Introduction.....	1
1.1 Background of the study	1
1.2 Statement of the Problem.....	5
1.3 Research Objectives	6
1.3.1 General Objective	6
1.3.2 Specific Objectives	6
1.4 Basic Research Questions	7
1.5 Significance of the Study	7
1.6 Scope of the Study	8
1.7 Limitation of the Study	9
1.8 Organization of the study	10
CHAPTER TWO.....	11
2.Review of literature.....	11
2.1 Introduction.....	11
2.2 Local Economic Development.....	11
2.3 Local Economic Development Strategy	15
2.4 Key local economic development activities.....	17
2.4.1 Locality development	17
2.4.2 Business development	18
2.4.3 Human resource development	19
2.5 Local Economic Development in Ethiopia	20
2.6 Participation	22
2.7 Forms of community participation.....	25
2.8 Barriers of Community Participation.....	26

2.9	Participation and Community development.....	27
2.10	The Principles, Problems and Key issues in Participatory Local community economic development	29
2.11	Principles of Participatory community economic development	29
2.11.1	Approach each situation with humility and respect.....	29
2.11.2	Understand the potential of local knowledge	29
2.11.3	Adhere to democratic practice	30
2.11.4	Acknowledge diverse ways of knowing	30
2.11.5	Maintain a sustainability vision	31
2.11.6	Put reality before theory	32
2.11.7	Embrace uncertainty	32
2.11.8	Recognize the relativity of time and Efficiency	33
2.11.9	Take a holistic approach	33
2.11.10	Exercise an option for community	33
2.12	The Twelve Commandments for Participating the Communities in development:....	34
2.13	The Nine plagues of Participatory community economic development	36
CHAPTER THREE.....		40
3.	Research methodology and methods	40
3.1	Introductions.....	40
3.2	Research approach	40
3.2.1	Primary Data Sources	41
3.2.1.1	Questionnaires.....	41
3.2.1.2	Interviews.....	42
3.2.1.3	Observation	43
3.2.1.4	Focus Group Discussion (FGD).....	44
3.2.1.5	Secondary Data Sources.....	45
3.3	Sampling Method.....	45
3.3.1	Sample Size Determination	45
3.4	Method of Data Analysis	47
3.4.1	Primary Data Analysis	47
3.4.2	Quantitative Data Analysis	47

3.4.3	Qualitative Data Analysis	48
3.4.4	Secondary Data Analysis	48
CHAPTER FOUR	49
4DATA PRESENTATION AND ANALYSIS	49
4.1	Introduction	49
4.2	Background of the Study area, Community and the Respondents.....	49
4.2.1	Description of the study areas.....	49
4.2.2	Characteristics of the Respondents	50
4.2.3	Questionnaire Distribution and Response Rate	52
4.3	<i>Institutional framework</i>	53
4.3.1	PLCEDW Coordination Committees.....	56
4.3.2	The appointment of the committees	57
4.4	Structure and Functions of different committees.....	58
4.4.1	The Steering Committee	58
4.4.2	The Development Council	60
4.4.3	The development committee.....	60
4.4.4	The woreda development main committee.....	60
4.4.5	Woreda Sub-Committees.....	61
4.5	Participation of the Community in LED	62
4.6	Challenges for effective public participation in LED projects.....	68
4.7	PLCEDW Actors' coordination and the community attitude towards developmental activities	74
4.7.1	The coordination of the PLCEDW actors in Planning of Developmental Activities in three woredas	75
4.7.2	The coordination of the PLCEDW actors in implementation of Developmental Activities in three woredas	76
4.7.3	The coordination of the PLCEDW actors in Evaluation of Developmental Activities in three woredas	76
4.7.4	The coordination of the PLCEDW actors in Fund Raising in three woredas.....	77
4.8	Developmental Activities Undertaken by PLCEDWS in three woredas from 2011 up to 2017.....	78
4.9	Extent of community participation	78

4.10	Summery and major research findings.....	80
CHAPTER FIVE.....		82
5CONCLUSION AND RECOMMENDATION.....		82
5.1	Conclusion	82
5.2	Recommendation	84
5.2.1	Institutional frame work and development plan	84
5.2.2	Extent of community participation	84
5.2.3	Challenges of public participation	85
5.2.4	Attitudinal and other barriers.....	86
5.2.5	Need to have Vibrant Committees.....	86
References		88
Appendixes.....		a

List of Figures

Figure 2.1: <i>LED structure in Ethiopian (adopted from ministry of works and urban development)</i>	21
Figure: 4.1. <i>Organizational structure of PLCEDW in Addis Ababa city administration</i>	53
Figure: 4.2. <i>The source of money for PLCEDW</i>	77

List of Table

Table 2.2: <i>Forms of community participation</i>	25
Table: 3.1. <i>The list of key informants</i>	42
Table: 3.3. <i>Total households in the three woredas</i> :.....	46
Table: 4.1. <i>Residential type and population size of selected woredas.</i>	50
Table: 4.2. <i>General characteristics of the respondents</i>	51
Table: 4.3. <i>Questionnaires distributed, collected and the response rate</i>	53
Table: 4.4. <i>Survey on the knowledge of the community about the directive</i>	55
Table: 4.5. <i>Response on the knowledge of the community about the existence of different committees</i> 56	
Table: 4.6. <i>Survey on the committee’s selection process</i>	58
Table: 4.7. <i>Response about the existence of community participation in the study area</i>	62
Table: 4.8. <i>About the Participatory local economic development started date</i>	63
Table: 4.9. <i>Response on the participation of communities in development projects (financially) in the study woreda</i>	65
Table: 4.10. <i>Participation of the community in LED planning</i>	66
Table 4.11 <i>participation of the local communities in LED strategic planning</i>	67
Table: 4.12. <i>Responses on the Challenges of community participation</i>	68
Table: 4.13. <i>Response on the importance of participation in LED activities</i>	71
Table: 4.14. <i>The level of the community’s participation in LED of their locality</i>	72
Table: 4.15. <i>Response on the comprehensiveness of the PLCEDW</i>	73
Table: 4.16. <i>About the existence of government coordinators office in nearby</i>	75

Acronym

- AACA-CHDO: Addis Ababa City Administration Construction and Housing Development Office
- AC: Audit Committee
- CDC: City Development Council
- CEE: Center for Environment and Education
- CFCMSC: Construction Follow-up, Care and Maintenance Sub Committee
- CMCPPSC: Community Mobilization and Community Participation Plan Sub Committee
- CSA: Central Statistics Agency
- DC: Development committee
- FGD: Focus Group Discussion
- FPMMSC: Finance, Procurement and Material Management Sub Committee
- GDP: Gross Domestic Product
- GNI: Gross National Income
- GNP: Gross National Product
- GTP: Growth and Transformation Plan
- IEDC: International Economic Development Council
- ILO: International Labor Organization
- LCD: Local community Development
- LDP: Local Development Plan
- LED: Local Economic Development
- LEDS: Local Economic Development Strategy
- MBDC: Mender and Block Development Committee
- MPPPSC: Mobilization and public participation planning sub-committee
- NGO: Non-Governmental Organizations
- OECD: Organization for Economic Cooperation and Development
- PCDA: Participatory community economic development Agency
- PLCEDW: Participatory Local community economic development work
- PLCEDWs: Participatory community economic development workers

- PLED: Participatory Local Economic Development
- QDC: Qetena Development Committee
- SC: Steering Committee
- SCDC*: Sub-city Development Council
- SD: Sustainable Development
- SDS: Social Development Strategy
- SSA: sub-Saharan Africa
- USAID: United States African Development Foundation
- UTTMP: Urban Transportation and Traffic Management Plan
- WCED: World conference on Environment and Development
- WDC*: Woreda development Council
- WDMC: Woreda Development Main committee

CHAPTER ONE

1. Introduction

Local economic development (LED) is an approach towards economic development which allows and encourages local people to work together to achieve sustainable economic growth and development there by bringing economic benefits and improved quality of life for all residents in a local municipal area.

Previously, economists have studied local economic development as a subject distinct from national economic development but today, observers view local economies as the critical building blocks of national development (Blair &carroll, 2009 cited by Tadesse, 2014). From this it can be inferred that national economic development is the sum total of economic developments in every locality. Therefore, local economic developments have to be sustainable to bring about sustainable development at national level. Hence, any development program and strategy must be designed in collaboration with the community, the government and other stakeholders.

Therefore, what is local about local governance need not be the "actor", but rather the needs, interests and well-being of the local community. Participatory decision-making is a major element of local governance and requires effective decentralization policies, strategies, legal frameworks, programs and activities (Kauzya 2003:4).

1.1 Background of the study

Local economic development (LED) is an approach towards economic development which allows and encourages local people to work together to achieve sustainable economic growth and development there by bringing economic benefits and improved quality of life for all residents in a local municipal area.

Previously, economists have studied local economic development as a subject distinct from national economic development but today, observers view local economies as the critical building blocks of national development (Blair &carroll, 2009 cited by Tadesse, 2014). From this it can be inferred that national economic development is the sum total of

economic developments in every locality. Therefore, local economic developments have to be sustainable to bring about sustainable development at national level. Hence, any development program and strategy must be designed in collaboration with the community, the government and other stakeholders.

Therefore, what is local about local governance need not be the "actor", but rather the needs, interests and well-being of the local community. Participatory decision-making is a major element of local governance and requires effective decentralization policies, strategies, legal frameworks, programs and activities (Kauzya 2003:4).

Participatory development is the most important approach that enables local communities to help themselves and sustain efforts in local development projects. Botes and Rensburg(2000) justified this fact that communities are no longer seen as recipients of developmental projects; rather they are critical stakeholders that have an important role to play in management of developmental projects in their areas. Currently, developmental activities are being designed with the proclaimed motive of giving power to local communities to manage their own developmental activities. And the question of community participation is directly linked with sustainable development cannot be realized (OECD, 2010) Multilateral agencies such as the World Bank have also placed greater emphasis on community participation as a way to ensure development sustainability because participation of community is a mechanism enables that and enables local people to determine their own values and priorities and act on their own decisions (Korten, 1980).

South Africa is one of the few countries in sub-Saharan Africa region that officially embarking on led projects for over a decade. A focus on so-called LED strategies was introduced shortly after the end of apartheid. Although most of these projects can be considered to be community development or so called pro-poor LED projects, the larger metropolitan areas in South Africa, such as Johannesburg and Durban, have initiated LED interventions similar to those in Western Europe, North America, parts of Latin America and Asia. The South Africa experience may hold valuable lessons for the broader application of the LED approach in SSA. The South Africa is arguably in a better position than most sub-Saharan African countries, especially in terms of GDP per capita and

transport infrastructure provision, it is facing a similar development environment, and many of the problems encountered by LED strategies there may be reproduced elsewhere in Africa.

Since the LED has been, internationally, recognized to be rights based, bottom-up approach to trickle down the effects of high growth to the general population, the LED approach was presented and discussed intensively in a series of stakeholder consultative meetings and workshops in the beginning of 2009. As a result, a consensus was built amongst the stakeholders to introduce LED in Ethiopia. In a planning workshop, the stakeholders developed an organic LED implementation and management framework and agreed unanimously for its implementation. This framework has been adopted and integrated within the existing government system, and is being implemented as part of the government intervention in all the seven localities and four Regions.

Improved local governance requires cooperation and partnerships. The service delivery triangle relating to LED consists of three partners (government, the NGOs and local communities).

LED is a relatively new concept in Ethiopia and, as a result, some of the more contemporary ideas around the role and implementation of LED are either not known or embraced by many practitioners. Internationally, there is much agreement over what doesn't work in LED but not very much agreement over what does work.

Though the degree and way of contribution for local economic development varies, local efforts have been made in different developing countries, including Ethiopia, participatory efforts for local economic development started in the imperial regime and continued up to this time molded by the political and economic ideology of the time: according to Tadesse (2014), peasants association and urban dwellers association were functioning during the Derg regime but their aim was manipulating the local community to strengthen their government.

Currently participatory works are being done by local communities in different urban and rural areas of Ethiopia. However, different studies in different times regarding local

economic development indicated that there are lack of local view for economic development for different reasons.

The overall objective of LED intervention is to promote pro-poor economic growth and sustainable livelihoods, through local capacity development for creating an enabling environment, jobs creation, increasing investments, and targeted economic interventions. In light of this, LED intervention focuses on a two-pronged approach Level one local capacity development for creating an enabling environment; and Level two support to creating jobs opportunities for youth, women and vulnerable groups, through increasing investments and targeted economic interventions.

According to the Addis Ababa city government executive and municipal service organ the overall objectives of LED face so many problems related to public willingness to participate in LCD activity in my observation also there is agape between the community interest and the officials do. Gape in public awareness about the LCD public participation effect.

Addis Ababa city government executive and municipal service organ re-establishment proclamation number 35/2012 “Woreda Administration” means the third administrative stratum of the city, which is a unit of sub-city.

Currently participatory works are being done by the local communities in different urban and rural areas in Ethiopia. The selected city for the study is Addis Ababa and there are development activities undertaken by the communities of the city in their sub-city for local development. The study focuses on three woredas from one of the sub-cities i.e. yeka sub-city, woredas 1, 2 and3. The participatory development work is supported by the city administration and voluntarily organized community groups and a regulation is also designed to govern the participatory development works.

This study tried to assess the participation of the local community in Local economic development. The contribution of community participation to local economic development are measured by assess the institutional frame works for community participation, the extent to which the community is participating, identifying challenges in public participation in the local projects. And the participation of the community was measured

using the attitudes of the community towards the Participatory Local Economic Development works (PLED), equality and equity of benefits obtained from the PLED by all the communities.

Personal Experience's and the course that I took pushed me to study this area. I am also interested in the grassroots level development.

1.2 Statement of the Problem

Previously, economists have studied local economic development as a subject distinct from national economic development but today, observers view local economies as the critical building blocks of national development (Blair & carroll, 2009 cited by Tadesse, 2014). From this it can be inferred that national economic development is the sum total of economic developments in every locality. Therefore, local economic developments have to be sustainable to bring about sustainable development at national level. Hence, any development program and strategy must be designed in collaboration with the community, the government and other stakeholders.

Different studies agree that community participation is vital for sustainable development either at local, regional or national level as involvement of the local community is one of the criteria of development. In Addis Ababa city at all sub cities efforts were and is underway to ensure Participatory community economic development work on various issues like construction of access roads, public toilets, sport centers, etc. Regulations are also prepared to guide the participatory development work at sub-cities and Woreda levels in the city.

Though, a number of ongoing reviews have been conducted at national level, systematic and comprehensive study was not conducted regarding practice and prospects of community participation in local economic development particularly, no research has been done in the area of challenges that face the communities while discharging their duties in local development projects from the perspectives of institutional frame work , extent how long the community can participate and also attitudinal factors in the study area and the researcher intended to fill this gap.

Hence, from the above facts, the researcher believes that there are problems in participate the community in local economic development projects in the study area and specific study is essential to see those practices and prospects, then put base line information which enables to address the challenges from the target area.

And the question of participation is inextricably linked to local economic development, for without a plurality of actors and approaches, sustainable development cannot be realized (United Nation's University, 2006). But Community members are often complaining that there is a problem in involving the community in decision making and in the works undertaken by the community and the effects of the participatory works are not as such visible as well. This created a gap in the participatory development activities in the sub city.

In Yeka sub-city participatory community development, was started some years ago. Addis Ababa city administration has organized a team of workers and experts in community participation. Different developmental activities are undertaken in each sub-city. The local government, the city administration, NGOs, civil societies, and different stakeholders are contributing to the development of the local economy.

This study focused on the participatory development process in yeka sub-city, woreda 1, 2 and 3, the practice and prospects of community participation and the outcomes in terms of local economic development. The objectives and research questions below are identified based on these focus areas.

1.3 Research Objectives

1.3.1 General Objective

The general objective of this study is to assess perform and prediction of community participation in local economic development.

1.3.2 Specific Objectives

Having the above mentioned general objective, the study has the following specific objectives

- To assess the institutional frame works for community participation in LED in Yeka Sub-City.
- To investigate the extent to which the community is participating in LED projects and its future prospects.
- To identify the challenges for effective public participation in LED projects in the Study area.
- To recommend possible solutions in order to enhance public participation in LED projects in Yeka Sub-City.

1.4 Basic Research Questions

To achieve the predetermined general and specific objectives this study will answer questions related with community participation and local economic development in yeka sub-city, woredas(1, 2and 3). Hence the following are the research questions to be addressed by the study:

- What are the institutional frame works for community participation in LED in Yeka Sub-City?
- To what extent the community is participating in LED projects and what are its future prospects?
- What are the challenges for effective public participation in LED projects in the Study area?
- What are the solutions in order to enhance public participation in LED projects in Yeka Sub-City?

1.5 Significance of the Study

Effective community participation needs a good understanding of our communities or the groups and individuals we work with. We need to get to know their needs, priorities, capacity and any barriers to taking action before launching into any interventions.

The overall objective of LED intervention is to promote pro-poor economic growth and sustainable livelihoods, through local capacity development for creating an enabling environment, jobs creation, increasing investments, and targeted economic interventions. The study will be help the officials to promoting economic growth thru awareness creation fair opportunity and treat distribution,

Beyond its importance as partial fulfillment for Masters of Arts in Public Management and Policy, this study will be use for as input in improving of the community's participation in the three woredas are study and in the sub-city or city level as a whole. In addition, this study will be contributing an input for a researcher interested on the area in the sub-city in particular or in the city administration in general.

The policy making units also will be understand the practices and prospect of LED in the study aria. The development practitioners that serve the community also can observe the community response about their activity.

1.6 Scope of the Study

Development is holistic which encompasses social, economic, cultural and political dimensions. To ensure development, socio economic, political and cultural change must be there. These dimensions of human life are in separable and development cannot be real with the absence of one of these dimensions. But in scrutinizing development, considering each component separately will give an advantage of deep and clear knowledge of the process and consequence of development from each component. Hence in this study the nature and purpose of the research, the time and budget forced to concentrate on one single dimension without denying the importance of others. Hence this study assesses the economic dimension of development in its grassroots level Local Economic Development which is achieved through the effort of the community in the locality.

Despite the fact that community participation work in development of local economy is a very important and being undergoing in all the ten sub-cities of Addis Ababa city administration, it is impossible to investigate deeply by studying more than one sub-city with a number of woredas as a case because of cost and time constraint and also the nature and purpose of the research.

Hence this study concentrated on three selected woredas from yeka sub-city. In yeka sub-city participatory development activities are being undertaken like others sub-cities. Among the ten sub-cities Bole, yeka, kirkos, Akaki-kality, Nefas Silk-Lafto and Kolfe-Keraniyo sub-cities are registered to have improving participatory work despite their higher population size compared to other sub-cities (AACCA-CHDO). Hence in this study, yeka sub-city was selected. The researcher has Experience in participatory development works in the woreda. More over the three woredas are selected from the sub-city. They are geographically connected and in conducting participatory activities together and are the relatively best achieving woredas in the sub-city. They are can be representative for the sub city.

1.7 Limitation of the Study

In conducting this study, different challenges was encountered. Most of the problems are faced during the collection of relevant data. Survey conducted in three woredas which contains more than 4,391 households. Distribution and collection of 390 questionnaires in per house base the difficult thing as the community are settled densely in some part of the area and scattered in other part. Hence the researcher may force to employ data collectors to manage the bulk of surveys in each woredas.

The problem of absence of documented records of the developmental activities undertaken by the PLCEDWs also was another problem and the researcher was forced to go to the sub-city and woredas frequently to obtain the documents.

The researcher faced problem during conducting of FGD. The participants were not come together from different areas. This problem remedies by the facilitator office and some individuals that I know personally.

The researcher was being also in a serious financial problem in conducting the study because the whole expenses cover by the researcher.

1.8 Organization of the study

The study is organized in to five chapters. The first chapter contains the introduction of the study. In this chapter the background of the study, the problem statement, the general and specific objectives, the research questions, the significance of the study and the challenges and limitations of the study are included. The second chapter contains the related literature reviews with the issue under investigation. Issues related with development, economic development, local economic development, participation and community development are deeply discussed in this chapter.

The third chapter is about the methodology of the study. The research design, the data collection tools, the sampling method and sample size determination, method of data analysis and presentation and other issues related with the methodology employed on the study is discussed. The fourth chapter is about the data presentation and analysis. All the data obtained using all the data collection tools and the information obtained from key informants and document analysis is analyzed and reported in this chapter. The last chapter is about the conclusion and recommendation. Based on the data collected and the analysis undertaken, conclusions and important recommendations are forwarded in this chapter.

CHAPTER TWO

2. Review of literature

2.1 Introduction

This chapter presents the literature review. Data obtained from different article was utilized depending on their relevance to the research questions. It contains about Local economic development, local economic development strategy, key local economic development activities local economic development in Ethiopia forms and barriers of community participation and community development, the principles, problems and key issues in participatory local community economic development, the twelve commandments for participating the communities in development the nine plagues of participatory community economic development etc.

2.2 Local Economic Development

Local economic development is a current, popular concept with a contested meaning. Broadly speaking, local economic development relates to the increased level of control exercised over economic development by local urban agencies; this includes local business, local government, community organizations and non-governmental organizations. There is not one single strategy or action which comprises local economic development; instead it is a term to describe the local initiatives that respond to development needs at the local level. In other words, the focus is on using local people with local approaches for local outcomes. LED means more than just economic growth. It is promoting participation and local dialogue, connecting people and their resources, for better employment and a higher quality of life for both men and women (ILO, 2013).

The World Bank describes local economic development as follows: Local economic development (LED) offers local government, the private and not-for-profit sectors, and local communities the opportunity to work together to improve the local economy. It focuses on enhancing competitiveness, increasing sustainable growth and ensuring that growth is inclusive. LED encompasses a range of disciplines including physical planning, economics and marketing. It also incorporates many local government and private sector

functions including environmental planning, business development, infrastructure provision, real estate development and finance (The World Bank Group, 2011).

The practice of local economic development can be undertaken at different geographic scales. A local government pursues LED strategies for the benefit of its jurisdiction, and individual communities and areas within a local government's jurisdiction can also pursue LED strategies to improve their economic competitiveness. Such approaches are most successful if pursued in partnership with local government strategies. LED is, thus about communities continually improving their investment climate and business enabling environment to enhance their competitiveness, retain jobs and improve incomes (The World Bank Group, 2011). Local communities respond to their LED needs in many ways, and a variety of approaches can be taken that include:

- Ensuring that the local investment climate is functional for local businesses
- Supporting small and medium sized enterprises
- Encouraging the formation of new enterprises
- Attracting external investment (nationally and internationally)
- Investing in physical (hard) infrastructure
- Investing in soft infrastructure (educational and workforce development, institutional support systems and regulatory issues)
- Supporting the growth of particular clusters of businesses
- Targeting particular parts of the city for regeneration or growth (areas based initiatives)
- Supporting informal and newly emerging businesses
- Targeting certain disadvantaged groups.

Source: World Bank (2011)

The purpose of local economic development (LED) is to build up the economic capacity of a local area to improve its economic future and the quality of life for all. It is a process by which public, business and nongovernmental sector partners work collectively to create better conditions for economic growth and employment generation (World Bank, 2010). Similarly, Zaaier and Sara (1993) as cited in Nel (2001), define local economic development as essentially a process which local governments and/or community based

groups manage their existing resources and enter into partnership arrangements with the private sector, or with each other, to create new jobs and stimulate economic activity in an economic area. The overall purpose is to create an economic structure that facilitates and enables an improving quality of life. OECD also described local economic development as follows: the purpose of local development is to build the capacity of a defined territory, often a municipality or region, to improve its economic future and the quality of life for inhabitants. This definition emerges from a consensus between global institutions such as the World Bank, United Nations, and the Organization for Economic Development and Co-operation (OECD), academics, and from experienced practitioners on the ground.

Local development makes an important contribution to national economic performance and has become more critical with increased global competition, population mobility, technological advances, and consequential spatial differences and imbalances. Effective local development can Reduce disparities between poor and rich places, and to the stock of locally generate jobs and firms, increase overall private sector investment, improve the information flows with investors and developers, and increase the coherence and confidence with which local economic strategy is pursued. This can also give rise to better diagnostic assessment of local economic assets and distinctive advantages, and lead to more robust strategy assessment (OECD, 2010).

Cities have become a focus for renewed efforts to promote local development over the past 20 years. National governments are recognizing the need to empower cities and regions so that they can take the decisions and interventions needed to optimize their relative economic performance, and thus contribute more to national growth and development.

In some contexts this has led to a renewed impulse for the devolution of power and authority to local governments, and in others it has led to efforts by state, national, and federal governments to better support local and regional initiatives (OECD 2010). To exploit these opportunities, local governments may need to support the adjustment of their local economies, re-engineer their offer and leverage their assets to better compete in an internationally open and knowledge-driven economy. This includes fostering the skills of the labor pool as well as improving the productivity of infrastructure, the attractiveness of the business environment and the quality of life available. It can also involve explicit

efforts to reposition the local economy within contested international markets for locations (OECD 2010). According to the World Bank (2004), the LED concept itself has passed through three broad waves of developments. Today LED is in its third wave; the table given on the next page summarizes the three waves of LED.

Table: 2.1 History of Local economic developments

The Three waves of local economic development		
Waves	Focus	Tools
First 1960s to early 1980s	During the first wave the focus was on the attraction of <ul style="list-style-type: none"> • Mobile manufacturing investment, attracting outside investment, especially the attraction of foreign direct investment • Hard infrastructure investments 	To achieve this cities used: <ul style="list-style-type: none"> • Massive grants • Subsidized loans usually aimed at inward investing manufacturers • Tax breaks • Subsidized hard infrastructure investment • Expensive “ low road “ industrial recruitment techniques
Second : 1980s to mid 1990s	During the second wave the focus moved towards <ul style="list-style-type: none"> • The retention and growing of existing local businesses • Still with an emphasis on inward investment attraction, but usually this was becoming more targeted to specific sectors or from certain geographic areas 	To achieve this cities provided : <ul style="list-style-type: none"> • Direct payment to individual businesses • Businesses in curators/workspace • Advice and training for small and medium sized firms • Technical support • Business start-up support • Some hard and soft infrastructure investment
Third: Late 1990s onwards	The focus then shifted from individual direct firm financial transfers to making the entire business environment more conducive business. During this third (and current) wave of LED, more focus is placed on: <ul style="list-style-type: none"> • Soft infrastructure investments • Public/privet partnerships • Networking and the leveraging of privet sector investments for the public 	To achieve this cities are: <ul style="list-style-type: none"> • Developing a holistic strategy aimed at growing local firms • Providing a competitive local investment climate • Supporting and encouraging networking and collaboration • Encouraging the development of business clusters • Encouraging work force development and education • Closely targeting inward investment to support cluster growth

	<p>good</p> <ul style="list-style-type: none"> • Highly targeted inward investment attraction to add to the competitive advantages of local areas 	<ul style="list-style-type: none"> • Supporting quality of life improvements
--	--	---

Source: worldbank.org (2011)

2.3 Local Economic Development Strategy

The World Bank introduced a five step strategic planning of LED which is an integral part of the broader strategic planning process for a sub national region, city, town or rural area. Effective strategic planning ensures that priority issues are addressed and limited resources are well targeted. The five-step planning process detailed should be tailored to complement, and correspond with, other local planning processes. The process is not prescriptive and should be adapted to meet the needs of the individual community (World Bank, 2011).

- Stage one: organizing the effort

A community begins the LED strategy planning process by identifying the people, public institutions, businesses, community organizations and other groups with interests in the local economy. This is often led by the local government, usually the mayor or chief executive. The skills and resources that each of these stakeholders bring to the strategy process provide a critical foundation for success. The identification of these individuals and organizations assumes some basic knowledge of the workings of the city economy. A resource audit is a necessary input to the strategy, and should include the identification of financial, human and other capital resources that can contribute to the LED strategy. Working groups and steering committees can be established to ensure that both formal and informal structures are in place to support strategy development and implementation. Other issues that need to be tackled in the early stages include establishing LED staff teams and appropriate political processes.

- **Stage Two: Conducting the Local Economy Assessment**

Each community has a unique set of local attributes that can advance or hinder local economic development. These include its economic structure, its human resource capacity to carry out economic development, and how conducive the local government investment climate is to economic and business activity. The aim of the local economy assessment is to identify the community's strengths and weaknesses including its human resource capacity, local government's 'friendliness' to all types of business activities from corporate to informal, and the opportunities and threats facing the local economy. The goal of the assessment is to create an economic profile of the community that highlights the basis of its comparative and competitive advantage in relation to neighboring communities and other regional, national or international competitors.

- **Stage Three: Developing the LED strategy**

As part of the LED strategy, a shared economic vision for the community and LED goals, objectives, programs, projects and action plans will be developed. This process ensures that all major stakeholder groups are given the opportunity to define what is to be achieved, how it is to be achieved, which will be responsible and the timeframes associated with the implementation of the LED strategy. Most importantly, the LED strategy and action plans must be finely assessed against the staff resource capacity to carry them out, as well as the budgetary constraints.

Ultimately the strategy's action plans should be incorporated into the work and budgetary program of the local authority, and appropriate elements taken on by other stakeholders (business associations, utilities educational institutions, etc.) the aim is to leverage strengths, overcome weaknesses, exploit opportunities and deal with threats.

- **Stage Four: Implementing the LED Strategy**

Strategy implementation is driven by the LED action plans. Ongoing monitoring is provided through the formal structures identified and created in step one, and evaluation of specific project outcomes ensures that the strategy continues to lead to the achievement of

the LED vision, goals and objectives. In undertaking strategy implementation, it is important to identify and establish the appropriate institutions to carry out the plans.

- **Stage Five: Reviewing the LED Strategy**

Good monitoring and evaluation techniques help to quantify outcomes, justify expenditures, determine enhancements and adjustments, and develop good practices. This information also feeds into the review of the complete LED strategy. The LED strategy should be reviewed at least annually to ensure that it remains relevant. It may be that conditions have changed or that the initial assessment was incorrect to the local conditions. The LED strategy should evolve continuously to respond to the ever changing competitive environment.

2.4 Key local economic development activities

There are a number of activities which are undertaken in the process of developing the economy of a locality and “different cities will have different strengths and weaknesses requiring different development strategies” (Meyer, 2000: 29). For example: locality development; business development; human resource development; and developing creative cities. These distinctions, which structure the discussion below, are based on the division of local economic development activities as defined by Blakely (in his 1989 edition, and in Blakely and Leigh, 2010).

2.4.1 Locality development

Locality development is often considered a role of town planning as opposed to a component of local economic development; however the two are fairly integrated. Locality development is an essential element of local economic development as it is, at least partly, responsible for acting as an economic development stimulant (Blakely and Leigh, 2010). Local governments may acquire land to be reserved for defined local economic development activities, improve the amenity of the public realm, and provide landscaping and infrastructure for industrial and commercial land in order to encourage the establishment of economic development activities.

Urban renewal and improvement is an element of locality development for local economic development. It influences the type, quality and quantity of economic development attracted to the locality. Inner-city revitalization is a common application of this concept. Housing development is an important component of the urban renewal and improvement concept. It must provide for the variety of needs of the people in the community, and also the associated services to provide for the households (Blakely, 1989). Provision of community facilities is included in locality development. This includes numerous diverse services that range from car-parks and public bathrooms to school holiday programs and museums and art galleries to visitor centers (Blakely, 1989).

However, the focus needs to be on more than simply the physical environment. It can be argued that cities which foster business development enhance economic growth and development. Therefore, business development is another form of local economic development that needs to be examined.

2.4.2 Business development

It is important to have a “climate “conducive to business development (Blakely and Leigh, 2010: 267) in order to provide an environment which has the potential to improve peoples’ quality of life. Blakely and Leigh (2010) identify key business development tools which should enhance the local economy. There are numerous, however three of the most commonly discussed tools in the literature are business support centers, research and development and business clusters (Blakely, 1989; Blakely and Leigh, 2010). Business support centers foster and encourage business growth and development (McCann, 2001).

Research and development has evolved in an attempt to combat declining economic growth rates, as experienced in the United States (Farley & Glickman, 1986). Research and development is one of the key components of the new economic geography. It results in the focus of economic development being on developing new and/or more efficient and effective ways of carrying out business clusters are justified through using the explanation of agglomeration economies of scale. Business clusters are thought of as a magnet for other like businesses to locate within the same urban area (Perry, 2009).

In order for businesses to be able to undertake their desired activities, they need to have an appropriate pool of employees available to them. Therefore, human resource development is an important component of local economic development.

2.4.3 Human resource development

This is an important component, as people need to keep up with the skills required for emerging growth sectors in order to maintain skilled employment, and therefore decent income and quality of life, arguably the overall purpose of local economic development. Human resource development can involve enhancement of educational opportunities, the of a lower socio-economic standing in terms of their quality of life and the opportunities that are available to them as the focus of urban planning and development is on the needs of this creative class‘.

The main critique of local economic development focusing on this concept is that it ignores other, potentially more needy, sections of society (Blakely and Leigh, 2010). Facilitation of job placements specifically, client-orientated job creation and projects which work to encourage the maintenance of jobs into the longer term (Blakely and Leigh, 2010). As well as the skill gap, a locality gap can emerge as employment opportunities move from one location to another (Blakely, 1989). This integrates with the local economic development concept as local economic development strategies aim to attract and retain businesses which provide job opportunities for residents. Human resource development is especially important for the integration of current residents into the future economic structure, which is likely to be based on knowledge industries (Yigitcanlar, 2008). This requires a different skill set to the traditional industrial market, and opportunities need to be available for people to participate in this up-skilling. Human resource development has benefits beyond those directly experienced by the individuals and businesses. As certain areas become specialized in a certain trade or industry, an accumulation of knowledge is found to exist. This is known as localized knowledge accumulation (Henderson 2009: 519). Focusing on improving the quality of life for urban residents can go beyond simply providing an environment conducive to educational and employment opportunities. For a city to be able to attract and retain an adequate pool of

employees, the city must be a desirable place for the necessary and relevant people to live in. This idea is exemplified through an exploration of the notion of creative cities.

Local economic development in different countries tells as unique Experian's about it. The South Africa experience may hold valuable lessons for the broader application of the LED approach in SSA. The South Africa is arguably in a better position than most sub-Saharan African countries, especially in terms of GDP per capita and transport infrastructure provision, it is facing a similar development environment, and many of the problems encountered by LED strategies there may be reproduced elsewhere in Africa

2.5 Local Economic Development in Ethiopia

Ethiopia has embarked on federal and decentralized forms of government since 1990s. Woreda and urban governments figure prominently in the Ethiopian governance system. These local governments have authority and autonomy to undertake social and economic development as underlined in the different regional constitutions. Ethiopia's decentralization has provided space and opportunities for local governments to determine their future and spearhead their development. In other words, the decentralized structure in Ethiopia has created an enabling environment to undertake LED in Ethiopia. In addition, the fact that cities have their own budget empowers them to implement local economic development from own sources (Tegegne&Clacey, 2011). The 1995 Constitution formally established the country as a federal state. The Ethiopian federation was composed of nine ethnically defined regional states and two autonomous cities. The regional states are Tigray, Amhara, Afar, Oromia, Somali, Benishangul-Gumuz, Gambella, Harari, Southern Nations Nationalities and Peoples' (SNNPR) regions. Addis Ababa by the constitution and Dire Dawa through federal proclamation were structured as autonomous cities (Art 47 of the FDRE Constitution, 1995).

In the Ethiopian urban planning system, LED may be conceived at two major levels. It may be conceived as part of or to evolve from a city wide holistic urban structure plan/master plan/development plan. LED may be a long term plan having similar time horizon as the structure plan and LEDS could also be conceived as a short term/ medium term municipal plan that is extracted from the long term LEDS. It is from this level of

planning that projects are designed to be implemented (Ethiopian Federal Urban Planning Institute, 2006).

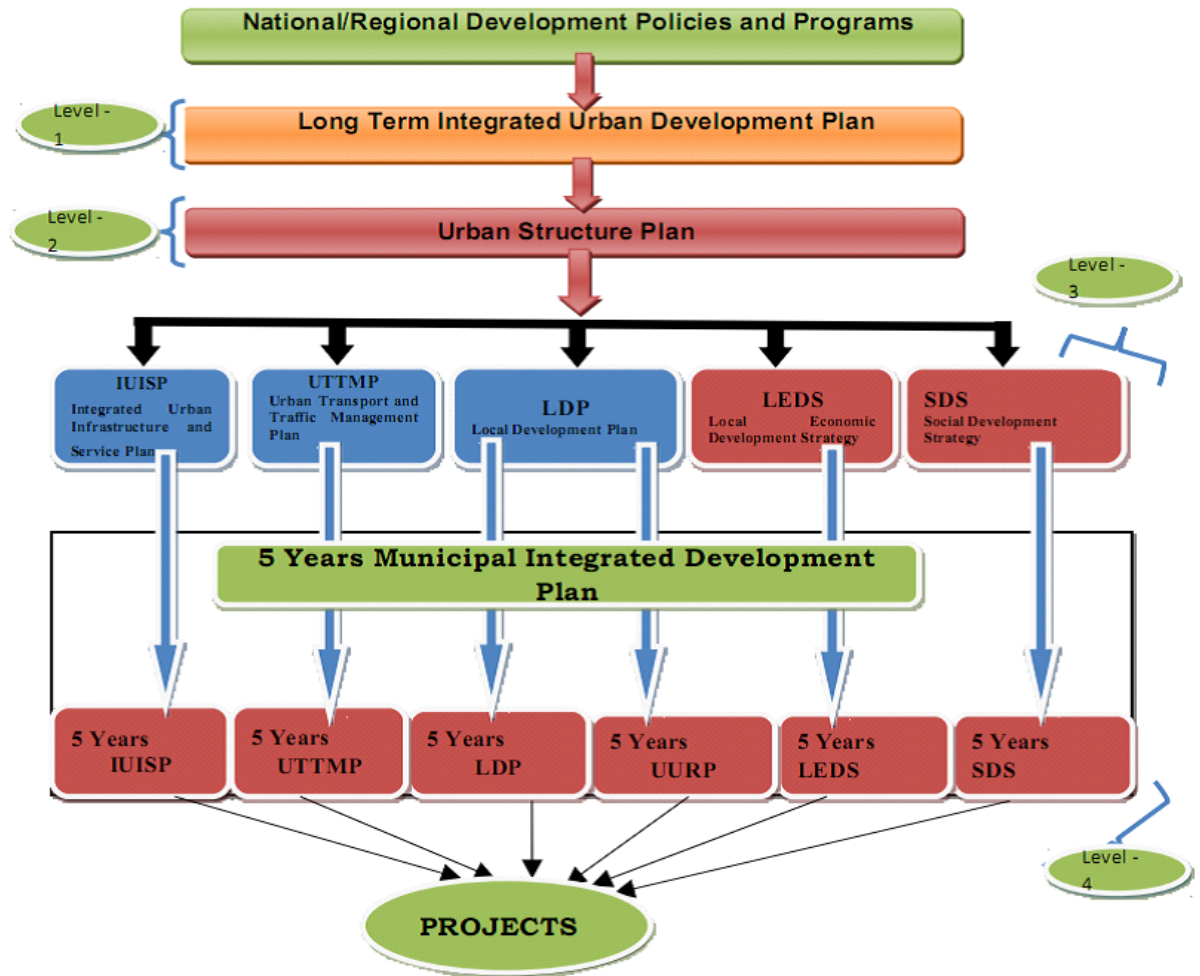


Figure 2.1: LED structure in Ethiopian (adopted from ministry of works and urban development)

Figure: 2.1. A Framework of the Trend in the Ethiopian Urban Planning System, adopted from *ministry of works and urban development, federal urban planning institute (2006)*. (*Local economic development strategy manual*)

As can be seen from the chart (Figure 1) LEDS is structured in the Ethiopian urban planning framework. In an integrated local development planning approach LEDS forms a system of five year development plan together with the other parts of the planning system.

As GTP focuses on agriculture, LED can assist this initiative by creating enterprises that will be closely linked to agricultural marketing, processing and input provisions. The closest link between GTP and LED, however, comes directly through the micro and small enterprise and the urban development components of GTP. Moreover as LED aspires to create efficient and functioning local economies, it has a direct alignment with growth and transformation efforts. The urban policy, the MSE strategy and the regional development framework provide additional opportunities for the implementation of LED in Ethiopia.

2.6 Participation

Participation in its dictionary meaning is an act or instance of participating, a sharing, as in benefits, the action of taking part in something, the act of participating, the state of being related to a larger whole etc (see in merriam-webster, Oxford dictionary, free online dictionary).

For the last twenty years, the concept of participation has been widely used in the discourse of development. For much of this period, the concept has referred to participation in the social arena, in the community or in development projects. Increasingly, however, the concept of participation is being related to rights of citizenship and to democratic governance (World Bank, 1995).

Participation is a rich concept that varies with its application and definition. The way participation is defined also depends on the context in which it occurs. For some, it is a matter of principle; for others, practice; for still others, an end in itself (World Bank, 1995).

Definition of participation adopted by the World Bank's Learning Group on Participatory Development is: Participation is a process through which stakeholders influence and share control over development initiatives and the decisions and resources which affect them. Participation, in the development context, [however] is a process through which all members of a community or organization are involved in and have influence on decisions related to development activities that will affect them. That implies that development projects will address those community or group needs on which members have chosen to

focus, and that all phases of the development process will be characterized by active involvement of community or organization members (USADF, 2013).

Often the term participation is modified with adjectives, resulting in terms such as community participation, citizen participation, people's participation, public participation, and popular participation.

- **Community Participation**

What is active community participation? How can you know when you have achieved it? What does it look like? The truth is that, there is no one right way to achieve deep community involvement. It will look different in every community. Yet, there are some common elements to sound participation that will be found in all communities (USDA, 2000).

- **Many People**

The first and most obvious principle of participation is that many people are involved. The work of the community is not considered to be the special province of a knowledgeable few perhaps the same elite leadership who has always run community affairs but it is the business of everyone. Participating communities engage many people in their work (Reid, 2000).

- **Many Centered**

Participating communities are open to involvement by many groups. They divide up responsibilities in a way that draws on the special talents and interests of contributing organizations by assigning responsibility for independent action to these groups. In short, under the overall umbrella of a representative community board, power and responsibility are decentralized in a participating community. The result is a community that has many centers of activity and that is capable of reaching deeply into the natural enthusiasm and talents of its citizens (Reid, 2000).

- **Open and Advertised**

The business of participating communities is open to all and widely publicized. Citizens are informed by a variety of means about the community's work, and opportunities for citizens to find meaningful roles in contributing to that work. Secrecy which only leads to suspicion, distrust and ultimately to the death of community involvement is strictly avoided (Reid, 2000).

- **Open to All Ideas**

In participating communities, there is no such thing as a bad idea. All ideas are welcomed and treated with respect. This not only honors the person whose idea is put forward, but it also sets a welcoming tone for fresh ideas and inspirations that might otherwise be hidden due to fear of ridicule.

Participating communities establish ways of screening out the best ideas from the merely interesting, but in a way that acknowledges the value of all ideas, no matter what their source. In doing so, they encourage all their citizens to bring forth their best for the common good (Reid, 2000).

- **Inclusive and Diverse**

In a participating community, no distinctions are drawn among various groups and types of personalities who offer themselves to community involvement. All persons are actively welcomed into useful roles, regardless of their color, age, race, prior community involvement, and level of education, occupation, personal reputation, handicap, language, appearance, religion, or any other factor. Participating communities know and recognize that, truly, we are all made equal, that we have an equal right to share in the work and benefits of community enhancement, as well as in its costs. The entire community is poorer when we fail to do so.

Further, participating communities do not sit by passively, waiting for a diverse group of citizens to present themselves for involvement. They realize that past discrimination, inexperience, and individual reluctance can hinder full community involvement, and they

actively reach out to all citizens to invite active contributions to the community’s business (Reid, 2000).

- ***Open Mind, Open Process***

As a consequence, participating communities operate so that it is clear to all that they are not controlled by any one organization, do not represent any one group of people, and are not limited to any one philosophy or way of doing business. Their leadership is used to facilitate discussion of a diversity of viewpoints, rather than to push its own agenda. Leaders are not ego-driven but focused on operating a high-quality, open decision-making process. In short, they are open-open in mind, and open in the way they carry out community activities (Reid, 2000).

2.7 Forms of community participation

Table 2.2: *Forms of community participation*

Form	Characteristics	Objectives
Manipulation	<p>The participation of the community is included for exploitative reasons.</p> <ul style="list-style-type: none"> • Communities are included in the service delivery process without positive intension or meaningful end. • There is no participatory decision making. • Initiatives manipulate communities to obtain agreements to interventions or human and financial resources. 	<ul style="list-style-type: none"> • Free labor • Cost recovery • Meeting • donor conditionality • Political gain
Information participation	<p>Many projects masquerade as being participatory but local government only impart or communities provide information.</p> <ul style="list-style-type: none"> • Communities are given information about local government’s intensions. This information is controlled by the government body and decision making is unlikely to be open to change. The process is not transparent, and the local government is not accountable. And/or • Communities share information with the local government. There is no control over the way information is used and there is no 	<p>Service in place and in use</p> <ul style="list-style-type: none"> • Minimizing community resistance to proposed interventions (e.g. communities surrendering land to widen roads) • Cost recovery

	feedback process.	
Consultation participation	<p>Form of participatory service delivery found in local governments with positive intensions towards participation, some limited capacity building, but little of process.</p> <ul style="list-style-type: none"> • Forums are established through which communities can communicate their views on intended proposals. • Information and decision making controlled by government but may be adapted to suit local requirements. • Group formation promoted. • Greater accountability. 	<p>Service in place and in use</p> <ul style="list-style-type: none"> • Minimizing community resistance to proposed interventions • Ownership • Sustainability • Cost recovery • Targeting of the vulnerable groups for more equitable development
Co-operation participation	<p>Stronger form of community decision making normally promoted by local government after some capacity building or policy change (or maybe facilitated by NGOs)</p> <ul style="list-style-type: none"> • The local government and the community cooperate in an alliance towards improved and demand responsive service delivery. • Communities are included in the process from an early stage. • Generally more cognizant of the needs of women and other vulnerable groups. 	<p>Community capacity building</p> <ul style="list-style-type: none"> • Ownership • Sustainability • Efficiency • Target vulnerable groups • Cost sharing • Possible objectives is the empowerment of the community
Mobilization participation	<p>Communities are in control of decision making process and local government enter in to initiatives as required by the community.</p> <ul style="list-style-type: none"> • Local governments respond to the effort of communities, or facilitate communities to control their own initiatives. 	<ul style="list-style-type: none"> • Community empowerment • Community manages service delivery • Cost recovery

Table: 2.2 Forms of community participation (adopted and Modified from Plummer, 2000)

2.8 Barriers of Community Participation

However, there are powerful factors that act as *barriers* to participation, thereby weakening the participation chain. These may be grouped under the following themes (Jo Moriarty et al, 2007):

- **Personal barriers:** for example the sense of personal powerlessness that stems from long-term reliance upon others and the costs of involvement to participants.

- **Institutional and political barrier:** for example a formal meetings culture and the use of language that does not encourage dialogue.
- **Economic and cultural barriers:** especially in communities where there is decline and fragmentation.
- **Technical barriers:** such as the lack of accessible formats and technological support for groups to enable service users to participate effectively or difficulties in getting small amounts of funding for support costs (Beresford & Hoban, 2005, pp19-21 as cited in Moriarty et al, 2007).

2.9 Participation and Community development

The concept Community development is the new paradigm of development that focuses on participatory methodologies and ensures the involvement of the community in the decision making process. It also encourages the use of practical and generalist skills, on locally derived revenues (Maser, 1997; Abott, 1995; Hawken, 1983). It is also a process of organization, facilitation and action that allow people to create a community in which they want to live through a conscious process of self-determination (Maser, 1997). It also operates successfully within the specific environment where the government is open for community involvement in the decision-making process (Abott, 1995).

Participation is a vehicle to achieve to development that community members can involve directly in development process [hence] without participation Community development could not be achieved (Zadeh and Ahmad, 2009). Participation is a good thing and important for many reasons and it has some benefits for the individuals of the community (Zadeh and Ahmad, 2009). Among the benefits the following are the most important:

- **Awareness:** Public participation also creates an awareness of the problem and possible solutions among the people and thereby equips them as citizens to exercise, relevant to development in a rational manner (Arora, 1979).
- **Confidence:** participation not only may include increased confidence and self-esteem, the chance to acquire new skills, but also leads to greater satisfaction and

improved quality of life (Moriarty et al, 2007). Participation promotion: - promotion aims at ensuring that decisions affecting the community are taken by all community members (Zadeh and Ahmad, 2009).

- **Find out own potential:** By helping people realize their own potential, participation can make citizens feel that the decisions of the system of which they are a part are their own. This process can induce increased popular enthusiasm for the implementation of decisions (Arora, 1979).
- **Planning:** Participation offers new opportunities for creative thinking and innovative planning and development. Participation is understood as giving a few influential people a voice in local decision making and planning whereas the most needy and deprived, who may be the majority of the community, are not even consulted, let alone given a part in the process (Johnston, 1982).
- **Effectiveness:** Participation can help us target resources more effectively and efficiently (Breuer, 1999). Participation promotes efficiency, effectiveness and equity in the total process of development (Arora, 1979). Hence, involving communities in decision-making will lead to better decisions being made, which are more appropriate and more sustainable because they are owned by the people themselves (Breuer, 1999). Participation can reduce the risk of project failure and the cost of the project.
- **Discussion:** It's necessary to explain community development in order to elaborate participation.
- **Government programs:** The technical assistance in planning and in carrying out the various programs is provided by the government (Arora, 1979). In spite of Indian long history of parliamentary democracy at the federal and state level, a largely bureaucratic system has long been dominant at the local and regional level. Important changes in the system were introduced in April 1993, when amendments to the constitution obliged states to create local government institutions. Local government institutions are responsible for the preparation and implementation of

certain schemes for economic development and social justice, as well as levying and collecting the appropriate taxes, duties, tolls, and fees. They are intended to increase participatory rather than representative democracy, by raising the participation of those citizens generally excluded from decision-making process for social, economic, or gender reasons.

The Mozambique Experian's also shows that, although LED is very much a locally owned approach, it requires the involvement of actors at all levels throughout the process in order to facilitate information and knowledge-sharing, ensure coordination of policies, avoid overlap of activities, and ultimately, guarantee informed decision-making by local stakeholders.

2.10 The Principles, Problems and Key issues in Participatory Local community economic development

Community Participation in local economic development is the necessary point to be discussed in this review. The theories and principles of community participation in development are discussed hereunder. Lucius Botes and Dingie van Rensburg articulated the twelve commandments and the problems for community's participation in development.

2.11 Principles of Participatory community economic development

2.11.1 Approach each situation with humility and respect

People who have lived their whole lives in communities and who have a direct stake in the outcome of a project have vital knowledge to contribute. Those people will likely not share that knowledge if they are not made welcome to do so or if their knowledge and intelligence is not respected.

2.11.2 Understand the potential of local knowledge

Practitioners of participatory development recognize the power of local knowledge. Authors such as RajestTandon, Vandana Shiva and Robert Chambers (Tandon, 1988;

Shiva, 1989; Chambers, 1983) eloquently discuss the importance and diversity of people's knowledge. Working with communities, highlights the uniqueness of people's knowledge like no text-book can.

2.11.3 Adhere to democratic practice

All too often, in our work lives we neglect the principles of democracy our societies are supposed to be built upon. The work world accepts a hierarchical order very readily (Saul, 1992). Participatory approaches challenge us to extend our notions of democracy into all spheres of our lives, including work. In participatory development practitioners recognize the tensions between democratic ideals and hierarchical structures and work towards overcoming the barriers to truly democratic work (Keough, 1998).

2.11.4 Acknowledge diverse ways of knowing

A participatory development practitioner must be open to the notion of ways of knowing. In traditional practice the scientific, European-based way of knowing is valued above all others. However, in communities there still exists a tremendous diversity of knowledge systems, whether it is local experiential knowledge, intuitive knowledge, or indigenous knowledge in all its manifestations. Participatory development practitioners recognize and try to understand and work within the knowledge system of the community they are working with (Keough, 1998). In the natural world diversity is seen as a virtue. The more diverse an ecosystem, the more stable and resilient it is. Diversity gives birth to possibility. The more diverse the opportunities to learn, the more diverse the methods employed, the more systems of knowledge explored, the more satisfying and successful will be the development process. Participatory methods allow that diversity to be explored to its fullest.

During a course in Athabasca, Alberta, Canada, participants learned that dioxins and furans are deadly carcinogenic compounds which result from the industrial wood pulping process (Richardson et al, 1993). These substances we know today are deadly in minute amounts hardly detectable. In fact ten years ago, amounts considered dangerous today were detectable. Our science told us they did not exist and pulp mill effluent was not

harmful. People in Athabasca justifiably wonder what other undetected substances will, in future, prove harmful.

2.11.5 Maintain a sustainability vision

Ecological collapse, strands of the web of life are snapped trees devoured by automobiles rivers run dry for color TVs flashing billboards in a sea of lights we sell our souls, if the price is right. Sustainable development is ubiquitous in the 1990s. However, it has lost its meaning because of the myriad ways it is used and co-opted. Participatory development practitioners work from a 'strong' view of sustainability, which begins with ecological sustainability (Rees and Wackernagel, 1996). In this sense, participatory practice encompasses an expanded view community and strives to incorporate the natural world into participatory frameworks. Participatory practitioners act as advocates of sustainability approaches. In my five years working in environmental education it has been reinforced to me that the discussion of sustainability has to start with the natural environment. We inescapably live in a finite world with finite resources (Rees and Wackernagel, 1996).

There is no alternative but to recognize this and to recognize that without functioning healthy ecosystems, human beings, human societies, even mutual funds, will not exist. The human species is in fact a product of many billions of years of the evolution of life. We have come into being in relationship to every other living species and cannot exist outside of the functioning ecosphere (Swimme and Berry, 1992). Within human society our goal is to improve our quality of life or to maintain quality of life of every individual equitably. As an instrument to achieve this quality of life we have created an economy. This economy exists within the human sphere - is one element of it. The economic system is of the human system and the human system is of the ecological system. Unfortunately, in our world today we live under the illusion of a completely opposite relationship between the ecosystem, human society and the economy. Paramount is the maintenance of our economic system, even at the detriment of our social system. And further, we attempt to maintain our species material standard of living part of our greater social system to the detriment of our ecological system.

2.11.6 Put reality before theory

Herman Daly and John Cobb in their book, entitled *For the Common Good*, discuss the concept of misplaced concreteness (Daly and Cobb, 1989). They argue that in the economic realm society has applied a misplaced concreteness to economic theory, and forgotten that it is only theory. In dealing on a daily basis with community issues, the shortcomings of theory become clearly evident, and it is a challenge for those of us immersed in our practice to recognize these shortcomings. There is the tendency to put theory ahead of reality - to make reality fit theory. But theories are merely simplified, useful, but incomplete, approximations of reality. It is the real issues and complexity of community which must be the starting point for learning and transformation. In attempting to work in an open, community-based, participatory process, the walls of official knowledge come down and you quickly learn which emperors have no clothes.

2.11.7 Embrace uncertainty

One of the hardest lessons to learn as a facilitator of a participatory process is to embrace uncertainty. All too often our educational system is geared toward giving answers. But concrete answers do not always exist. There are often many answers and there are often many more questions. For participatory development practitioners and community people, accepting uncertainty is a must in participatory process. In participatory development we see reality as best we can, we analyze it and act upon our best judgment, and then re-assess where we are anew. (Freire and Horton, 1987)

Participatory development practitioners embrace uncertainty and, in the face of epistemological correctness, stand by their convictions of the value of participatory methods. The adherence to a participatory process can be a hard-nosed strategy for achieving results but it is also a value-laden and moral position. We can show results with this method, but that is not the entire story. The knowledge embedded in a participatory process is often beyond scientific proof. Scientific proof is for science. If we value and use other ways of knowing we have to accept other means of assurance (Keough, 1998). Intuition for example or the conviction that the process itself is

It is immaterial to ask whether a democratic process is efficient or economical if, from a moral position, we believe in democratic process. This is not a judgment science can make for us. Those of us involved in a participatory process, faced with the demand for proof, at times have to stand by our convictions and assert our ability to know in other ways (Keough, 1998).

2.11.8 Recognize the relativity of time and Efficiency

Efficiency Participatory development practitioners face a battle against deeply embedded notions of time and efficiency. Saving time and working efficiently are unassailable principles of the modern world. But human process keeps its own time and defines efficiency in qualitative as well as quantitative terms. As practitioners we need to be aware of these tensions and work to be true to the pace of the process.

2.11.9 Take a holistic approach

A participatory practitioner recognizes the complexity of human interactions and the limitations of human designed linear process models. In participatory practice complexity is a reality not to be eliminated but to be understood, become comfortable with and incorporate into practice. Susan Griffin argues in *The Eros of Everyday Life* that in a larger sense all of our thought is metaphorical in that it is constructed out of the relationships we perceive and experience in the world (Griffin, 1995). Theologians, poets, ecologists and physicists all understand the essential relational nature of all things. Yet in the development process, we still desire to break things into small pieces to understand the whole (Keough, 1998).

2.11.10 Exercise an option for community

In a traditional funder-consultant relationship, a funder has a goal to achieve and the consultant gets it done. In a participatory development practitioners often mediate between the funder and the community, advocating for the community. Underlying this perspective on the advocacy role is an understanding that institutions exist at the service of community. We do not live in NGOs; we do not live in universities. These are institutions created to improve and sustain the life of our communities. We have forgotten the order of

things. How can we keep our attention fixed on the maintenance of our communities? How can we root our decisions in community? How can we ensure that the institutions created for the advancement of our communities do not lose sight of their reason for being which is in a democratic society to serve community. Authors such as Daly and Cobb and Saul have delved into this dilemma in some detail (Daly and Cobb, 1989; Saul, 1992).

2.12 The Twelve Commandments for Participating the Communities in development:

Whoever wants to get involve in participatory development should:

- Demonstrate an awareness of their status as outsiders to the beneficiary community and the potential impact of their involvement.
- Respect the community's indigenous contribution as manifested in their knowledge, skills and potential.
- Become good facilitators and catalysts of development that assist and stimulate community based initiatives and challenge practices which hinders people releasing their own initiatives and realize their own ideals.
- Promote co-decision-making in defining needs, goal setting, and formulating policies and plans in the implementation of these decisions. Selective participatory practices can be avoided when development workers seek out various sets of interest, rather than listening only to a few community leaders and prominent figures.
- Communicate both program/project successes and failures sometimes failures are more informative.
- Believe in the spirit of Ubuntu – a South African concept encompassing key values such as solidarity, conformity, compassion, respect, human dignity and collective unity.
- Listen to community members, especially the more vulnerable, less vocal and marginalized groups.
- Guard against the domination of some interest groups or a small un-representative leadership clique. This article pleads for a co-operative spirit and for a watch for oligarchic tendencies among community leadership.

- Involve a cross-section of interest groups to collaborate as partners in jointly defining development needs and goals, and designing appropriate processes to reach these goals.
- Acknowledge that process-related soft issues are as important as product-related hard issues. Any investment in shelter for the poor should involve an appropriate mix of technological and social factors, where both hard-ware and software are developed together. In this regard many scholars recognize the importance of a multi-disciplinary approach to project planning and development. The inclusion of a social scientist and someone with the appropriate skills from within the community, to work together with planners, architects and engineers is very important. A multidisciplinary approach will only succeed if technical professionals recognize and include the contributions of their social scientist partners in the planning process.
- Aim at releasing the energy within a community without exploiting or exhausting them.
- Empower communities to share equitably in the fruits of development through active processes whereby beneficiaries influence the direction of development initiatives rather than merely receive a share of benefits in a passive manner.

Source: (Botes and van Rensburg, 2000)

Despite the benefits commandments above, it is important to recognize that when participation is handled poorly, the chances of achieving positive changes will be reduced. Success means ensuring that people: are involved right from the start in initiatives; have than just one or two token members on a group; have a real say in decisions; meet regularly and receive regular updates on progress; are supported in the process and not simply left with a series of inaccessible papers to read; are given the results [of the participation] not simply being the subjects whose knowledge is taken; have a say in the meaning of the results and how these will be used (Butt & O'Neil, 2004, p18). The conditions at which Participatory community economic development will fail, is of equal important to be dealt with like the commandments to conceptualize

the enquiry. Lucius Botes and Dingie van Rensburg in their article titled, community participation in development discussed about the nine things that kills Participatory community economic development. And they are discussed in this review squeezed in the form that will fit for this study as follows.

2.13 The Nine plagues of Participatory community economic development

1. The paternalistic role of development professionals

Paternalism of development professionals creates a dangerous power dynamic in which foreign experts claim entitlement to the final say during project design and implementation. They monopolize decision-making, manipulate the needs of the community to match their preconceived notions of the community's deficiencies, and trivialize community members perspectives (Midgley, 1986).

2. The inhibiting and prescriptive role of the state

Botes and van Rensburg assert that, for the state, community participation programs are often more about maintaining existing power relations in society and ensuring the silence of the poor, as well as legitimizing the political system ... as a form of social control. Participatory programs *should* work to improve the well-being of the destitute and produce alternative, more democratic, more empowering decision-making models (Botes and van Rensburg, 2000 p. 45).

3. The over-reporting of development successes

This plague is pretty easy to fix, yet is committed often. Those involved in development prefer to accentuate their successes while glazing over their faults. This is for the simple reason that success is rewarded, whereas failure, however potentially informative, is not. Such a frame of mind is injurious in that it undermines valuable information that could be used to improve an intervention's efforts in the future (Botes and van Rensburg, 2000 p. 45 & Dudley, 1993).

4. Selective participation

Selective participation occurs when the most visible and vocal, wealthier, more articulated and educated groups ... are allowed to be partners in development without serious and ongoing attempts to identify less obvious partners. [Or] it is the Exclusion of more marginalized members of the community. One of the worst manifestations of selective participation occurs when the development agency buys ‘the goodwill and support of key interest groups in the community, which is also referred to as community-renting. ‘This is often the result where community involvement exercises are susceptible to manipulation and misappropriation ... Since participation for the developer is largely a matter of convenience, the objective is to find a partner in order to allow the project to continue and the screening of the representativeness of the partner is, at most, secondary (Botes and van Rensburg, 2000 p. 46.)

5. Hard-issue bias

The hard-issue bias favors tangible deliverables, which are more conducive to objective evaluation, to the less visible, more abstract achievements of community development programs.

In many development projects the so-called hard ‘issues (technological, financial, physical, and material) are perceived as being more important for the successful implementation of these projects than the ‘soft‘ issues (such as community involvement, decision-making procedures, the establishment of efficient social compacts, organizational development capacity building and empowerment) (Botes and van Rensburg, 2000, pp. 46-47).

Botes and van Rensburg suggest that this could be a result of the assumption that social and cultural features (the so-called soft issues) are ephemeral, intangible and unnecessary time-consuming in comparison to the more easily managed hard issues. This assumption - inevitably results in a technical bias, which neglects the fact that inappropriate social processes can destroy the most noble development endeavor (Botes and van Rensburg, 2000, pp. 46-47).

6. Conflicting interest groups within end-beneficiary communities

Much like the plague of selective participation, this plague concerns the conflict that can arise between disparate interest groups when development projects introduce scarce resources and rare opportunities for growth and change. Dissonance amongst community constituents, competition, and lack of shared vision causes difficulties in the identification of project goals and objectives.

The stratified and heterogeneous nature of communities is a thorny obstacle to promoting participatory development. In heterogeneous communities people are often less likely to participate due to divisions of language, tenure, income, gender, age or politics, than in less diverse communities (Asthana, 1994 pp.57-58).

7. Gate-keeping by local elites

If a local leader or group leadership authority in a particular community interposes itself between the development agency and the project beneficiaries to maintain power, the outside organization may have difficulty ensuring that the best interests of the community members are being pursued (Unite for Sight, 2013). There is always the danger that decision-making at community-level may fall into the hands of a small and self-perpetuating clique, which may act in its own interests with disregard for the wider community (Botesand van Rensburg, 2000, p. 49). And in developing countries, the peculiar dynamics of informal settlements often lend themselves to an autocratic style of leadership based on patronage, which reinforces the prevailing inequality of the existing social structure ... In this way, and in spite of their sometimes useful role as mediators for the 37 urban poor, they limit the direct and active participation of low-income people in general. This behavior by more dominant groups has often deprived the weaker and more vulnerable social segments of participation in community affairs. This may also lead to self-centeredness and selfish development decisions (Botesand van Rensburg, 2000, p. 49).

8. Excessive pressures for immediate results: the accentuation of product at the expense of process

As Botes and van Rensburg acknowledge, there is always a tension between the imperatives of delivery (product) and community participation (process), between the cost of time and the value of debate and agreement. This overwhelming pressure for immediate outcomes hampers emphasis on institution-building and pushes poverty reduction programs into the realm of welfare and relief. Such an exigent stress on rapid results sometimes goads developers to finish the projects quickly at the expense of forgoing community involvement (Botes and van Rensburg, 2000, p. 50).

For many, participatory development is too time-consuming and not cost-effective, because participation in practice is always a slow and uncertain process and is likely to involve more paper work and soul searching ... [But] although true participation involves greater costs for the identification, design, and planning phases, it may actually be saving more time and money during the implementation and evaluation phases, because it ensure that people take ownership of a project (Botes and van Rensburg, 2000, pp. 50-51).

Botes and van Rensburg point out, though, that hasty technocrats || are not the only ones who are impatient. Potential beneficiaries, too, want speedy, tangible delivery. The authors suggest that both need to realize, however, that product without process runs the risk of doing something communities do not want or need, or cannot sustain (Botes and van Rensburg, 2000, p. 51).

9. The lack of public interest in becoming involved

This plague has two dimensions. Sometimes, community members do not want to become involved simply because the project does not interest them. This could suggest an underlying deficiency in project design-developers may be introducing a service not needed or wanted by the community. Other times, community members, disillusioned by failed expectations in past projects, may have little faith in the promises of agencies (Botes and van Rensburg, 2000).

CHAPTER THREE

3. Research methodology and methods

3.1 Introductions

This part describes the research design strategy, data analysis method, sources of data, the design of the survey instruments, the sampling method used in the field work and the process of data analysis.

3.2 Research approach

The study employed mixed methods research design strategy. Mixed methods research design strategy is an approach to inquiry that combines or associates both qualitative and quantitative forms. It involves the assumptions, for the use of qualitative and quantitative approaches, and the mixing of both approaches in a study. Thus, it is more than simply collecting and analyzing both kinds of data; it also involves the use of both approaches in tandem so that the overall strength of a study is greater than either qualitative or quantitative research. Mixed methods research designing strategy (both qualitative and quantitative forms). I employed concurrent mixed methods strategies of inquiry are used (converges or merges quantitative and qualitative data).

The Research employed a descriptive method. The main characteristic of this method is that the researcher has no control over the variables, the researcher reported the institutional frameworks, and the extent the community is participating in LED work, the challenges for effective public participation, and the attitude of the community to participate in local economic development.

3.2 Data type and sources

Primary and secondary data are used for the study. Primary data obtain directly from the stakeholders and secondary sources as an additional Meta data to support the information obtained from the primary sources.

3.2.1 Primary Data Sources

In case we do research of the descriptive type and perform surveys, whether sample surveys or census surveys, then we can obtain primary data either through observation or through direct communication with respondents in one form or another or through personal interviews (Kothari, 2004). Taking this in to consideration, the researcher collected primary data by making direct contacts with the respondents and observing all the activities being and is done.

The primary data was obtained from questionnaires, face to face interviews, and from observation in the developmental activities undergone by the community in the sub-city and focus group discussions with a group of individuals representing the ordinary community, the local government, and members of different committees. The observation also included transact walks across the locality and list down the outcomes of community participation; in essence, the local development indicators that are installed by community participation such as schools, access roads, health posts, toilets, waste management facilities, etc

3.2.1.1 Questionnaires

The researcher selects to use questionnaire as one important tool to collect the necessary data from the local communities. Questionnaires are distributed to the members of the community. The questionnaire design by the researcher contains both closed and open ended questions based on the nature of information the question is bringing about. Questionnaire prepared for the members of the woreda community and has six parts. Important details regarding institutional frameworks, the extent to which the community is participate, relationship between the sub-city administration and the community, the work activity of different committees including their appointment process, the development activities undertaken, challenges, distributive justice and the attitude of the community is obtain by using questionnaire.

3.2.1.2 Interviews

The researcher believes that the information obtained by the questionnaires is not enough to finalize the study, as it is necessary to have a face to face contact with important people to take more information that may not be obtained otherwise. As Wilkinson & Bhandarkar, (1992) stated interview techniques of data collection is one of the verbal methods of data collection like the questionnaire with the only difference that, interview had involved oral verbal stimuli and oral verbal response while questionnaire involves written verbal stimuli and written verbal response. Personal feelings and information that are important for the study but over passed in preparation of questionnaire are entertained here.

Because of the nature of the study the researcher opted to use both structured and unstructured interviews. According to the data that study needed the Interview was conducted with 15 of 25 individuals by using purposive or judgmental sampling, selected that engaged in developmental activities the respondents that selected for the interview close to the data it help to meet the objectives. From woreda, qetena, community and also sub city. The following table (table 3.1) summarized the key informants from different place.

Table: 3.1. The list of key informants

Key informant	No.	Description	Remark
The Woreda development main committee	3	1 representative from each woreda	
The Qetena development main committee	6	2 representative from each woreda	
The Woreda construction and housing development office head	3	1 person from each woreda	
The sub-city construction and housing development office head	1	The head of the office	
Community participation officer in the sub-city	2	2 representative from the officers	

The use of the two methods have an advantage by simultaneously making the interviewee free to respond whatever he/she like and guiding him/her towards the point the researcher went to deal with. The interview involves the use of a set of pre-determined questions and

appropriate techniques of recording and hence the researcher took a note during an interview for both the structured and unstructured interviews. Respondents, either the government officials, the members of different committees or the ordinary local community, if addressed by questionnaires, are excluded from being considered in interview.

To this end two interviews was prepared, one for the government officials in the sub-city (5) (Participatory community economic development coordinators), and other for different committee members (9).

3.2.1.3 Observation

As Wilkinson & Bhandarkar, (1992) stated, many types of data sought by the social scientists can be obtained through direct observation. Hence observing the activities undertaken and the way they are being done by the participatory development workers found to be important and the researcher used observation as an instrument for data collection.

Observation is the process in which one or more persons observe what is occurring in some real life situation, and they classify and record pertinent happenings according to some planned scheme. Simply put, observation is a purposive or intentional examination of something, particularly for purposes of data gathering. In an observational study, the current status of a phenomenon is determined not by asking as with survey or through interview, but by observing.

Therefore, for this study the researcher used participatory type of observation in order to take part in the local participatory economic development activities in the local community. So that, the researcher gains advantages to record behavior as it occurs, to gather information from subjects who are not capable of giving verbal reports of their behavior or feelings [for different reasons], to obtain information simply from those who are reluctant to give their idea/feeling because of political or other reasons. Information regarding what the participatory development looks like and the modalities, the community's attitude towards the PLED works, the relation between the government officials, committees and the local community are obtained from.

3.2.1.4 Focus Group Discussion (FGD)

This study also was employed focus group discussion type of instrument for primary data collection to support information obtain from other sources of primary data. One FGD was conducted in each woredas and a total of three FGDs are conducted. The researcher took part in all FGDs as a facilitator and guider of the discussion by pre-pointing the issues was being raised in. The reason for using FGD is that conflicting ideas was obtained from interview, questionnaire and observation by the researcher while conducting the participatory observation was get reasons or the researcher was gate the actual gap and the discrepancies.

As Tayie (2005) point out, in conducting the FGD a minimum of 6 and a maximum of 12 individual is involve in one FGD. The researcher was used the FGD with the number of individuals within the interval. And the researcher played an active role in raising issues for discussion, interrupting ideas that are not the domain of the discussion, raising critical questions that can fill the data gap and recording all the ideas raise by the participants including the points in which the participants reach in common consensus and oppose on by counting the voices of the participants regarding the idea under conflict.

The people include in the FGD was selected from the ordinary member of the community, who are active participant in the LED, government officials responsible on the area, community participation officers and members of different committees at different levels.

Table: 3.2. The participants in FGD

Participants	No of participants in each woreda			
	W – 1	W – 2	W – 3	Remark
Woreda development main committee	1	1	1	
Qetena development committee	1	1	1	
The block and mender development committee	1	1	1	
Active Participants from the community	3	3	3	
Woreda Community participation officers	1	1	1	
Total	7	7	7	

3.2.1.5 Secondary Data Sources

Secondary data means data that are already available i.e., they refer to the data which have already been collected and analyzed by someone else (Kothari, 2004). Or secondary data is data collected by someone else and the researcher need only to extract the required information (Renjit, 1996). Keeping this in mind, The researcher in this study was used secondary sources of data which includes facts which are previously discovered by other investigator, reports (monthly, half year, annual) of the sub-city sent for the city administration, magazines, pamphlets and other related documents kept by the sub-city under study to get the necessary information which enable to finalize the study.

3.3 Sampling Method

Cluster and simple random sampling methods are used together.

3.3.1 Sample Size Determination

In yeka Sub-city the total number of household is 49,283. There are 13 Woredas and the study was investigated three consecutive Woredas in the sub-city i.e. Woreda-1, Woreda-2 and Woreda-3. The total number of households in each woredas, obtained from the woredas administrative office. The following table presents all the households in each woredas except military compounds and condominiums. The condominiums and military comp households are relatively they don't have a settled life and also according to the PLCED office it has low contribution for over all participatory local economic development in yeka sub city woredas.

Table: 3.3. Total households in the three woredas:

No.	WOREDAS	NUMBER OF HOUSEHOLDS	REMARK
1	Woreda one	1,595	Except military compound and condominiums
2	Woreda two	1,435	Except military compound and condominiums
3	Woreda three	1,361	Except military compound and condominiums
	Total number of households in the three woredas	4,391	Except military compound and condominiums

Source woredas 1, 2&3 administration office, record department:

To determine the appropriate sample size for the study since the population is large the following simplified formula is applied:

Where: N = Population Size

n = Sample Size

e = Precision (Sampling Error)

$$n = \frac{N}{1 + N(e)^2}$$

In this scenario the researcher assumed the confidence level, the degree of variability and the sampling error as follows:

Confidence Level = 95%

Degree of Variability = 50% (Maximum Variability)

Sampling Error = ± 5%

Total Population = 4,391

The sample size is computed as follows:

To determine the appropriate sample size for the study since the population is large the following simplified formula is applied:

$$n = \frac{N}{1 + N(e)}^2$$

$$n = \frac{4391}{1 + 4391(0.05)}^2$$

$$\mathbf{n = 366}$$

In evaluating the sample sizes, the researcher taken in to account that the study employed multiple sources of data like Interview, FGD, observation and Secondary sources of data with the questionnaire method. In addition, time and cost constraints are also considered. And the sample size calculated to be **366** households.

Since questionnaire is not the only and the dominant method of data collection in the study, considering this sample size could not have any negative impact on the credibility of evidences and the total quality of the paper.

Therefore the sample size for the study was being **366** households.

3.4 Method of Data Analysis

Data analysis is a process of inspecting, cleaning, transforming, and modeling data with the goal of discovering useful information, suggesting conclusions, and supporting decision-making for the researcher.

3.4.1 Primary Data Analysis

As discussed in the methodology part, the primary data was collected using questionnaire, interview, focus group discussion (FGD) and participatory observation. In addition Information was obtained from each tools are analyzed together and the FGD and observation are conglomerate together carefully.

3.4.2 Quantitative Data Analysis

The quantitative data was obtained from both primary and secondary sources were analyzed together. Based on the research objectives the extent communities are participate

analyzed based on Percentages and other simple statistical methods. And also the respondents response due to questioners also summarized numerically by using percentages.

3.4.3 Qualitative Data Analysis

Qualitative data for the study was obtain from both primary (questionnaire, interview, focus group discussion, participatory observation) and secondary sources (documents, different reports, rules and regulations, working manuals) dealt with in a careful way to coordinate all information from different directions. Qualitative data includes the attitude of the community, the modalities of participatory development work, the relationship between the government officials and different committees and the community.

Generally all the information obtain from all methods of primary data collection was combine together carefully to make sense of all data from different sources together as each method of data collection has its own advantage and disadvantage. The data obtain from questionnaire, interview, FGD or participatory observation alone is not enough to construct reasonable finding. In order to make the data from this process meaningful, qualitative data matrix was used for data summary and analysis of findings from different categories of respondents.

3.4.4 Secondary Data Analysis

All data was collected from secondary sources like reports, documents, working manuals; directives etc. are scrutinize in a way that can help the researcher achieve the above stated objectives by considering the information from printed documents and reports as an integral part of the whole data to finalize the study. Data obtained from secondary sources are meaningless without being with the data obtained from primary sources and vice versa. Hence both the primary and the secondary data was analyzed together to extract synergistic effect out of it. In general meta-analysis was being conduct on secondary information so as to triangulate primary data results.

CHAPTER FOUR

4 DATA PRESENTATION AND ANALYSIS

4.1 Introduction

This chapter presents data results and analysis. Data obtained from the field was utilized depending on their relevance to the research questions. The techniques and tools of data presentation, description and analysis were decided based on the characteristics of the data set. Thus the chapter contains six parts. The first part is about the description of study areas. It describes on the characteristics of the data sets, the source of their economy, the demographic structure, educational background and other information. The second part presents data results on the institutional framework for community participation and the directives used to institutionalize the participation of various stakeholders. The third part presents data results about the extent community are participating in the development of their locality. The fourth part presents about the members of different committees and their work activities and challenges. The fifth part presents the relationship of the government, community and the Participatory Community Economic Development Workers (PLCEDWs). The last part presents about the developmental activities undertaken by the PLCEDWs, the outcome of this undertaking and the local communities 'attitude towards the developmental activities undertaken by the PLCEDWs in their locality.

4.2 Background of the Study area, Community and the Respondents

4.2.1 Description of the study areas

Addis Ababa city is divided into 10 sub-cities, among which yeka sub-city is the one with population of 420,320 (195,814 male and 224,506 female). yeka sub city is divided into thirteen Woredas. All the communities in this sub-city are urban dwellers (ECSA, 2007). Out of the population, 336,256 people live in usual and 84,064 people (20%) live in unusual houses. According to the data obtained from each woredas administrations, the total population (households) in the three woredas (woredas 1, 2 and 3) is 5,269, the total household. In woreda 01, 1,595 households among which 1,356 household's live in private homes remaining 240 households live in kebele houses. In woreda 02 there are about 1,435 households among which 1,363 household's live in private houses remaining 72

household's live in Kebele houses. And in woreda 03, there are about 1,225 households living in privet homes and 136 live in kebele house. (See table: 4.1. bellow).

Table: 4.1. Residential type and population size of selected woredas.

No	Woredas	No of households, residence and percentage				
		No of households	Total households			
			Residence	Number	Percentage	Total %
1	Woreda 01	1595	Private Kebele	1356 240	85% 15%	36.32%
2	Woreda 02	1435	Private Kebele	1363 72	95% 5%	32.68%
3	Woreda 03	1361	Private Kebele	1225 136	90% 10%	30.99%
	Sub total	4391	Total	4391	100	100%

Source: Field work, February 2018

The data summary in Table 4.1 above reveals that the highest number of households is found in woreda 01, which is 36.32% of the total population, and woreda 02 contains the second largest number of households which is 32.68% of the total population and woreda03 have the least number of households which is about 30.99% of the total population.

4.2.2 Characteristics of the Respondents

Table 4.2 shows the general characteristics of the respondents. Among the respondents 56.28% are males and the remaining 43.71% are females. Their age composition is that, the highest number of the respondents is 36 and above years old which comprises 44.85% of the total respondents. And the remaining 26.57% of the respondents are between 26 – 35 years of age. Regarding the education level of the respondents 20.57% are below grade 8 and 48.28% are between grade 8 and 12. 23.42% of the respondents are 10/12+1/2/3 and diploma holders. The remaining 7.71% of the respondents hold education level of First Degree and above. Regarding the job condition, the majority of the respondents (48.28%) are private workers (Private workers in this context includes employees in private organizations, and entrepreneurs and others who generates income by

themselves) and 29.42% are government employees while the remaining 22.28% are job seekers. Here the percentage of job seekers is very large. According to the data obtained, the LEDWs are creating a temporary employment opportunity but according to Key informants and the secondary data, since now.

There is no any micro, small, medium or large industries created as a result of the PLEDWs which could be creating permanent job opportunity. Beside this, except some of the work activities the LEDW is done in voluntary involvement of the community without regular pay. Regarding the income level, among the employed residents (private and government) 23.13% of the respondents have a monthly income of less than 1000 birr; 38.56 % of the respondent's income level is between 1001-2500 birr. 21.14% of the respondents have income level 2500 – 4000 birr and the remaining 17.13% of the respondents have income level greater than 4000 birr. Table 4.2 shows all the characteristics of the respondents and for more clarification the age, sex, educational level, job condition and income level of the respondents is represented in the Table 4.2 below.

Table: 4.2. *General characteristics of the respondents*

No	Description		Number of respondents	Percent
1.	Sex	Male	197	56.28%
		Female	153	43.71%
2.	Age	Bellow 25	15	4.28%
		26-35	93	26.57%
		36-45	157	44.85%
		More than 46	85	24.28%
3.	Educational qualification	Bellow grade 8	72	20.57%
		8-12 grade	169	48.28%
		10/12 +1/2/3	44	12.57%
		Diploma	38	10.85%
		Degree	23	6.57%
		Masters and	4	1.14%

		above		
4.	Job condition	Gov't employee	103	29.42%
		Private workers	169	48.28%
		Job seekers	78	22.28%
5.	Income level per month	Below 500 birr	45	12.85%
		500-1000 birr	36	10.28%
		1001-1500 birr	39	11.14%
		1501-2500 birr	96	27.42%
		2,500-4,000	74	21.14%
		4001-6000 birr	45	12.85%
		Above 6000 birr	15	4.28%

Source: Field work, February 2018.

4.2.3 Questionnaire Distribution and Response Rate

Survey questionnaire was planned to administer for **366** respondents. An additional 24 (6.56%) questionnaire was added to minimize the shrinkage of the collected responses in case of defect and uncollected questionnaires. As a result, the survey questionnaire was distributed to 390.

Respondents selected randomly in proportion to the population size in each woreda. In the three woredas 390 questionnaires are distributed. 142 (36.32%) is distributed to heads of household in woreda 1, 127 (32.68%) in woreda 2 and 121 (30.99%) and in woreda 3. From the questionnaire distributed in each of the woredas, 122 (34.85%), 115 (32.85%) and 113(32.28%) in woreda 1, 2 and 3 respectively have returned. Among the collected questionnaires, 40 have defectives. The net questionnaires completely filled and collected are 350 (89.74%).

Table bellow summarizes the total amount of the questionnaire distributed in each woreda and collected and the total response rate.

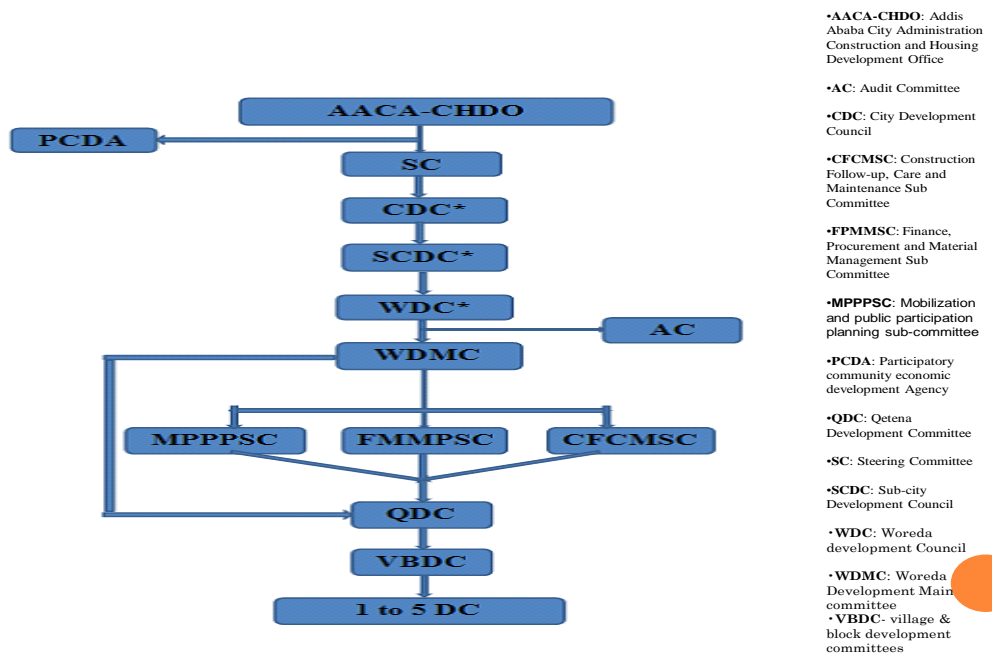
Table: 4.3. *Questionnaires distributed, collected and the response rate*

No	Stratification based on woreda and kebele & number of questionnaires distributed & collected in each woredas and kebeles									
	Woredas	No distr.	percent		woredas	Collected	Percent	Defect	reason	Net collected
390				Total collected						
	01	142	36.32%		01	122	34.85	20	Lost	112 (34.85%)
	02	127	32.68%		02	115	32.85	12	Lost	115 (32.85%)
	03	121	30.99%		03	113	32.28	8	Lost	113 (32.28%)
		390	100%				350	100	40	

Source: *Field work, February 2018*

4.3 Institutional framework

Figure: 4.1. *Organizational structure of PLCEDW in Addis Ababa city administration*



Source: Document analysis March 2018

Figure 4.1 shows the organizational structure of the different committees and officials for facilitating the PLCEDWs. The structure is designed by the author based on the position, duties and responsibilities of each committees depicted in the directive. The hierarchical structure in Figure 4.1 shows that, the owners of the PLCEDWs are the Addis Ababa City Administration Construction and Housing Development Office (AACACHDO) and the Participatory Community Development Agency (PCDA), under these two offices there are different committees composed of different personnel (see topic 4.4). Under the AACACHDO there is a steering committee organized in city level. And under the city steering committee there are sub city steering committees and woreda steering committees. In addition to this there are also city, sub-city and woreda development councils (CDC*) under the direct supervision of AACACHDO. Under the city, sub-city and woreda development councils there are development main committees (DMCs). And under the DMCs there are development committees (DC0 up to qetena and village & block level).

As per the data obtained from the key informants, among the councils and the committees the sub-city and woreda development committees are the only functional ones. Especially

the woreda development committees shoulder all the duties of the committees superior to it.

Besides the committees organize to coordinate the PLCEDW in city, sub-city and woreda level are too huge in number. As it can be observed in Figure 4.1 the organization structure of the PLCEDW is very complex and tall with narrower span of control. This complex nature of the organizational structure of the PLCEDW coordinators is unnecessary which will confuse the community. In addition, the committees at the higher stratum of the structure are not active and they are there as a symbol and most of the development activities are coordinated by the development committees the sub-city and below. The existence of the city steering committee is not adding a value in the coordination of PLCEDWs. The steering committees at the city and sub-city level must be reshuffled so as to include personnel who are not overburdened in other government responsibilities. The organizational structure needs to be simplified and easy for the local community to adapt with.

In addition a directive is prepared in 2011 GC to guide the overall movement of the PLCEDW in Addis Ababa city. The directive has a detail about the participation of the community in their locality and the committees and their roles and responsibilities. The whole PLEDW is guided by this directive. The directive according to the respondents from the community is not clearly known by the local communities. Table 4.13 summarizes the total responses of the respondents for the question did you know that there is a directive to coordinate the PLCEDWs?

Table: 4.4. *Survey on the knowledge of the community about the directive*

No	Description	Number	percent
1.	Yes	145	41.43%
2.	No	205	58.57%
Sum Total		350	100%

Source: Field work, February 2018

As can be seen in Table 4.4 highest percentage of the respondents (58.57%) has not the knowledge whether there is a directive to guide the PLCEDW in Addis Ababa city or not. On the other hand the key informants said that, they have the knowledge about the directive. As per the data obtained from the key informants, the committees are given training by the city administration after selected as a committee member and they had prepared an awareness creation program on the directive for the community in their locality which they are from. The other thing in this issue is about the enactment process of the directive. Neither the key informants from the committees and the government officials nor the respondents from the community know about the way the directive has passed through to become a legally enforcing institutional tool. And the entities participated in doing so are not clearly known by the community whom the directive is intended to rule over.

More over as Table 4.4 summarized, the communities are not aware of the directive. Therefore continuous broad awareness creation campaign is necessary to enable the community learn about the directive.

4.3.1 PLCEDW Coordination Committees

The PLCEDW is coordinated by different committees organized from the city level down to sub-cities, woredas, Qetenas, menders and one to five development teams.

Table: 4.5. Response on the knowledge of the community about the existence of different committees

No	Description	Number	Percent
1.	Yes	268	76.57%
2.	No	82	23.43%
Sum total		350	100%

Source: Field work, February 2018

The majority of the respondents have the knowledge about the existence of different committees in their woredas and sub-cities. As it can be seen in the table above 76.57% of the communities know about the existence of the committees. The higher level of the

committees is organized with the higher government officials in federal sector organizations and authorities including higher officials from police and other organizations these higher committees are called the city steering committee.

Next to this a sub-city level steering committee is organized from officials in the city administration and representatives from different civic originations, religions , NGOs etc. the immediate subordinate for the steering committee is the development committee organized in city, sub city and woreda which is commonly named the main development committee organized in city, sub city and woreda which is commonly named the main development committee and there is development committee reporting to the development main committee in sub-city and woreda level. Subordinate to these all, there are sub-city development committees, woreda development committees, qetena development committees, the block and mender development committees and the one to five development committees. The one to five development committees, the block and mender development committees representative are selected among the member of the committee thereof. The woreda development committee members are elected by the direct participation of the community in the woreda in referendum. And the chairman, deputy chairman and the secretary of the development committees are selected among the development committees selected by the community in each woreda. There are three development sub-committees which are directly reporting for the woreda development main committee. They are Mobilization and public participation planning sub-committee (MPPPS), Construction Follow up, Care and Maintenance Sub-Committee (CFCMSC) and Finance, Material Management and Procurement Sub-Committee (FMMPSC).

4.3.2 The appointment of the committees

Table 4.15 summarizes the response of the respondents on how the committees are appointed. All the percentage of the responses is not enough to incline to any one of the possible options. The committees are not handpicked by the city administration, not elected by city wide election or not elected by the sub-city community in direct participation but the selection process is not clear for the respondents.

Table: 4.6. Survey on the committee's selection process

No	Description	Number	percent
1.	Handpicked by the city administration	47	13.43%
2.	By city wide election	64	18.29%
3.	Elected by the sub-city community direct participation	85	24.28%
4.	Not clearly known	154	44.00%
Sum Total		350	100%

Source: field work, February 2018

The committees are selected by referendum in woreda level by the woreda community. According to the key informants from the committees, government officials and respondents from the community, committees are nominated by the woreda community and then among the nominees proposed by the each Qetena and mender communities, a referendum conducted among the woreda communities and given a direct vote for each members of the nominees and a nominee with higher vote is selected as a member of the committee. Once these committees are selected by the local community then the chairman, deputy chairman and the secretary is selected among committees in the same manner.

4.4 Structure and Functions of different committees

4.4.1 The Steering Committee

The steering committee is organized from institutions which are active and have a potential for community participation in development to coordinate, follow up and give support for community development activities. According to the directive, the steering committee contains 15 members. Three of them are the chairman, the deputy chairman and the secretary and the remaining 12 are members.

The steering committee has the following duties and responsibilities given by the directive:-

Prepare short and long term plans and manuals for implementation and follow up the execution of the plans; apportioning fairly the revenue gained other than the government

budget as per the extent of the participation and development need of the Woreda and follow up their implementation.

Follows up and evaluate whether the member organizations are discharging their responsibilities and take corrective action listens for the reports of the member organizations Forward important ideas and collectively evaluate the works that the committee is undertaking. Lists out the duties of the member institutions and organizations; and follows up, coordinate and support the sub cities and woredas to form detailed job duties which are related with the works of the steering committee. In addition the steering committee rules over the development council. The members of the steering committee are higher officials of the government and executives of different organizations and city administration.

The chairman and deputy chairman are the deputy mayor and the advisor of the mayor for community organization respectively. The secretary is the head of the construction and housing development office. The other 12 members are the speaker of the city, the city administration manager, the mayor office and the head of the cabinet affairs, the city administrative office head, the community participation development agency head, the Addis Ababa police commission commissioner, the Addis Ababa sport commission commissioner, general manager of the mass medias, civil society representatives, the chief executives of the sub cities and the construction and housing development head of the sub city. Such type of committee which has same structure will be established in sub-city and woreda level. The construction and housing development office and its lower level structure will be the main secretariat of the work.

The involvement of the higher government officials in the steering committee is an advantage for the PLCEDWs to get top management emphasis. But as per the data on hand, the higher officials are completely out of involvement in the coordination of PLCEDWs. There has not been any regular contact of the steering committees. Hence the PLCEDW is lacking top management support.

4.4.2 The Development Council

Development council is organized at a city, sub-city and woreda level. It is composed of the representatives from the sub-city and persons elected by the people from the Qetena to the sub-city. It also includes religious organization's representatives, civil society's representatives, leaders of professionals associations and the steering committees for facilitating development. The development council is directed by the advisor of the mayor for community organization and the council is accountable to the steering committee. The development councils in city, sub-city, and woreda level have the same duties and responsibilities. The only difference is that one is subordinate to the other in level and their plan and duties and responsibilities are aligned with the development plan and duties and responsibilities in city level. The organization of the development councils in city, sub-city and woreda level is an advantage to look after the PLCEDWs in a short distance. But the development council in the city level is not active like that of the development councils in sub-city and woreda levels.

4.4.3 The development committee

The development committee also organized in city, sub-city and woreda level. There are the woreda development main committee and the woreda development section which are subordinate to the woreda development main committee.

4.4.4 The woreda development main committee

The woreda development main committee composed of the urban dwellers, youths and women's forum, youth associations and other civil societies and members are selected in fair and democratic manner. The members of the Woreda development main committee are from the committees of the villages and Kebeles. The main committee has 9 members; the chairman, the deputy chairman, secretary and accountants (finance officers) are elected among the 9 members.

As per the data obtained from the secondary source and interview conducted with the main development committee chairman, among the members 3 are from the urban dwellers forum, youth association and women's forum and the other 6 members are elected persons

from the community. The woreda development main committee is accountable to the woreda council and the chief executive of the woreda.

The woreda development main committee has the following duties and responsibilities: Plan, organize, direct and coordinate developmental activities in each Qetena; organizes sections for facilitating development activities and directs them towards achieving the intended goal; presents the development achievements from village and Qetena development committee to woreda development council; mobilizes and coordinates the populace for developmental activities as per the plan designed; ensure the collection of financial and material contributions for development activities collected in proper way using legal receipts and administers the finance and other properties as per the finance regulations; gives necessary support for the NGOs and other organizations and investors to undertake development projects that they plan to do by their own initiative; presents periodic financial reports for the woreda development council and chief executive of the sub-city and the main development committee presents three month report for the woreda people.

The Woreda development main committee is the most active one among the committees and councils. The yeka sub-city, Woreda-2 main development committee is undertaking developmental activities like asphalt roads, cobblestones, toilets, sideways, sport center and sewerage tubes etc.

4.4.5 Woreda Sub-Committees

Under the woreda development main committee there are three sub committees. The first one is the Mobilization and public participation planning sub-committee (MPPSPC) which is responsible for mobilizing the community towards local development; collecting and prioritizing the needs of the community; prepares the fiscal year's plan and submitted to the WDMC; updates the community about the developmental activities; follows up the implementation of the projects being undertaken, performs fund raising jobs; arranges discussion panels with the community preparing reports, pamphlets, brushers and uses other mechanism to disclose information about the developmental activities undertaken by the PLCEDWs for the community; and etc. The second is the finance, material

management and procurement sub-committee (FMMPSC) which is responsible for collect and depose the fund obtained from different sources; performs the finance and material management works as per the policy of the government; prepares monthly report of all transactions undertaken in the month; and presents a plan for purchase of materials to the DC through the MPPPSC. The third one is the construction follow up, care and maintenance sub-committee (CFCMSC) which is responsible for follow up of all projects.

Below the woreda committees there are the qetena, block and mender and the 1 to 5 development committees which are responsible for mobilizing and coordinating the community at the grassroots level. As the face to face interview responses with different officials of the sub city, woreda and Qetena‘ development main committee revealed that, in the current trend community participation in the yeka sub-city, these lower level committees are the most functional one like that of the woreda development main committee. This implies that the development activities in the sub-city are the result of joint effort of the lower and middle level committees. Had these lower committees been reluctant like the other higher committees, the development activities undertaken in the sub-city wouldn‘t be accomplished.

4.5 Participation of the Community in LED

Participatory Local community economic development works are being undertaken in the study area started before 2011. Most of the respondents and key informants agreed that the PLCEDW is started five years ago. The response for the question about the existence of participatory community development (Institutionalized) in the respondent‘s locality is summarized in Table 4.7. More than 90.57% of the respondents have known the existence of PLCEDW and works done in their locality.

Table: 4.7. Response about the existence of community participation in the study area

No	Description	Number	Percent
1	Yes	317	90.57%
2	No	33	9.42%
Sum Total		350	100%

Source: Field work, February 2018.

Currently there is a participatory works undergoing in the study areas but the actual time of commencement is not clearly known because of serious problem of record keeping in the city administration; especially at sub-city, woreda and kebele levels. Key informants indicated that the PLCEDW has started five years ago but the respondents indicate that the time where the participatory local development works started on is not clearly known. Respondents were asked whether the PLCEDW is started 10, 5 or one year ago in interval. The summary of the responses are presented in Table 4.8 bellow

Table: 4.8. *About the Participatory local economic development started date*

No	Description	Number	Percent
1.	Above 10 years	-	-
2.	5-9 years	22	6.28%
3.	1-4 years	279	79.71%
4.	Bellow 1 years	5	1.43%
5.	I don't know	44	12.57%
		350	100

Source: field work, February 2018.

Despite the fact that there is no documented track record of the PLCEDW in the study woredas, most of the respondents (**79.71%**) said that, the PLCEDW has started four years before. (**12.57%**) respondents are no idea about it. But some of the respondents (**6.28%**) responded that the PLCEDW has started five to nine years ago. The remaining (1.43%) respondent's responds bellow one year. However the PLCEDW is officially launched in 2011 after the enactment of the directive.

But as discussed in the background part of the study, PLCEDW is not as such a new step which hadn't been existed before in the past regimes or in past history of the existing government. As can be inferred from the key informants and from the survey questionnaire response, there was a community participatory development work before the enactment and enforcement of the directive. The kind of participation was un planed and dun in case of emergencies, without record of achievements and failures, without officially responsible leaders, with no legal framework and etc. but after the directive is put in effect the

appearance of the PLEDW is changed to be planned, and coordinated by the official committees and have a record of achievements and failures.

Currently the communities are participating in the PLCEDW in their locality by contributing money and other materials. The PLCEDW that the communities are being involved in are access road construction, drinking water pipe construction, health post construction, sports centers, housing for elders, kitchen construction and maintenance and security works among others (see table 4.9.). Key informants from the member of the committees and from the government officials revealed that the local communities are participated in the construction of the above listed facilities financially, in labor and expertise etc.

Table 4.9 summarizes the response of the respondents on the type of developmental activities that they are involved in. Some of the respondents are participated in more than one development undertakings. Their involvement is concentrated on contributing money for the planned development projects, giving labor service free of payment, and contribution in expertise.

As it can be seen in Table 4.9 some part of the community is participated more on one development undertaking and some others are participated on the other development undertaking thus the number of participants in each development undertaking is not the same while it is expected to be the same amount in all development undertakings. As per the data obtained from key informants this variety existed as a result of problem in involving all the communities equally in all development undertakings or problem of mobilization of the community to participate. The other problem is that communities that are participated in one development project were not maintained to remain active in other upcoming development undertakings. Hence the number of participants in each development activities at every time varies.

Table: 4.9. *Response on the participation of communities in development projects (financially) in the study woreda*

No	Description	Number	Percent
1.	Access road construction	298	85.14%
2.	Drinking wa ter	-	-
3.	Health post construction	-	-
4.	Sport centers	-	-
5.	Kitchen construction	197	56.28%
6.	Toilet construction	67	19.14%
7.	Sewerage tube	211	60.28%
8.	Greening environments	75	21.42%
9.	Housing construction for elders	18	5.14%

Source: Field work, February 2018.

However the mere involvement in development by contributing money, labor and expertise is not the only criteria to insure that the communities are participating in their locality development in full capacity. The community must participate from the planning to implementation and evaluation of local economic development activities. Key informants showed that the local economic development activities are planned from the 1 to 5 development team up to the kebele development committees and goes through woreda development committees and pass to the sub-city and city development committees and councils and decided in sub-city or city level (see also the Directive.) As per the information obtained from the focus group discussion and key informants, the development plan suggested by the local communities may or may not be included in the final development plan approved by the sub-city or city administration. The data obtained from survey shows that **78.85%** of the respondents said that they haven't ever been participated in the planning of local economic development activities. Only **21.43%** of the respondents assured that they have participated in LED planning (see table 4.10).

When we compare this percentage with the percentage of participation in development undertakings in table 4.9, there is a contradiction higher percentage of the community is participated in different development undertakings even though the amount is not equal and enough. Hence As observed in the development activities in each woreda and

information from the key informants, it can be indirect that the communities are involved in development activities.

Table: 4.10. *Participation of the community in LED planning*

No	Description	Number	Percent
1	Yes	75	21.43%
2	No	275	78.57%
Sum Total		350	100%

Source: Field work, February 2018.

Hence according to the data on hand from survey, the communities are not taking part in the planning of the LED in their locality. To support this fact in a preponderance of evidences it is necessary to go through details of LED strategic planning processes. In the related literature review part it is discussed that, the World Bank has introduced a five step strategic planning of LED which is an integral part of the broader strategic planning process for a sub national region, city, town or rural area which are :-

- 1) Organizing the effort including identification of the people, public institutions, businesses, community organizations and other groups with interests in the local economy; the interest of the community and the resources at hand.
- 2) Reviewing the LED Strategy;
- 3) Conducting the Local Economy Assessment
- 4) Developing the LED Strategy and
- 5) Implementing the LED Strategy (see pages 20 &21).

In this regard Table 4.11 bellow shows us that, small numbers of communities are involving different steps of LED strategic planning. This data result can be compared with the analysis in the above part about the problem of involvement of the community in planning local economic development and participation in some development undertakings and neglected in others. Like the selective participation in development undertakings, the communities are not fully and equally participating in local economic strategic planning.

Table 4.11 summarizes the respondents answer on the question in which step of local economic strategic planning did the communities participated? And the chance to select more than one option if any was given for the respondents.

Table 4.11 participation of the local communities in LED strategic planning

No	Description	Number	Percent
1.	Need assessment	27	7.71%
2.	Designing development strategy	36	10.28%
3.	Determining the components in the plan	32	9.14%
4.	Development evaluation	31	8.85%
5.	Prioritization of plans	28	8%

Source: Field work, February 2018.

As can be seen from table 4.11, the local communities are not involved in all steps of the LED strategic planning in their locality. Only **7.71%** of the respondents replied that they have participated in need assessment part of the LED strategic planning. **10.28%** of the respondents are also participated in designing the development strategy directly or indirectly; **9.14%** of the respondents participated in determining the components to be included in the plan; **8.85%** of the respondents are participated in evaluation of the development activities after conducted regardless of their involvement in the rest of the planning process and 8% of the respondents have participated in prioritization of plans (**Note:** the No and % of the respondents under each single description is counted out of the total population i.e. out of **350** or 100%).

The data here shows that the majority of the communities are out of the game in every stapes of LED planning. Here it seems that there is a discrepancy in the information obtained from the key informants (members of the committees and the government officials responsible for PLCEDW) and the survey data obtained from the community at large. The key informants revealed that the community is involved in every steps of the LED planning process but on the contrary the majority of the respondents from the community said that they haven't ever been involved in LED strategic planning process.

This discrepancy is created because of the gap created between the communities and the selected committee members. The committees and the government officials have a regular contact time but the government officials and the community as well as the committees and the communities didn't have a regular contact hour either clearly indicated in the directive or customarily practiced. In this regard the directive lacks definite regular contact time for the community and the committees and government officials to discuss about PLEDWs. Hence it indirectly affected the participation of the community in local community economic development works.

There is a gap between the committees and the communities as well as the government official are responsible for doings. Neither the committees nor the concerned officials are working together with the communities and a small number of people in the locality are active participants in the LEDW in their locality while majority of the residents are not. as per the data on hand, the reason for lack of community participation in LEDW can be attributed to paternalistic role of professionals and officials; inhibiting and prescriptive role of the state; over-reporting of development success, selective participation; hard issue bias; miss representing the local community's development need; get keeping by local elites; excessive pressure for immediate results than long term goals, lack of public interest to be involved in PLEW and so on.

4.6 Challenges for effective public participation in LED projects

Table 4.12 shows the respondents answer on the reason for lack of community participation in their locality. The respondent has had the chance to choose more than one option as a problem in the survey. From (Midgley, 1986) the nine plagues of Participatory community economic development the literature review.

Table: 4.12. *Responses on the Challenges of community participation*

No	Description	Number	percent
1.	Paternalistic role of professionals and officials	226	64.57%
2.	Inhibiting and prescriptive role of the state	178	50.86%
3.	Over-reporting of development successes	198	56.57%

4.	Selective participation	187	53.43%
5.	Hard issue bias	319	91.14%
6.	Miss representing the local communities Development need	125	35.71%
7.	Gate keeping by local elites	67	19.14%
8.	Excessive pressure for immediate results than long term goals	295	84.29%
9.	Lack of public interest to be involved in PLEDW	323	92.29%

Source: Field work, February 2018

As Table 4.12 shows, the problems discussed in the literature part which are potential obstacles for improvement of community's involvement in development projects of their own are more visible in the study areas. The existence of such type of problems will trigger the problem of the communities to take part in the PLCEDW in their localities. Hence Lack of the involvement of the community in the LEDW of their locality has a negative impact on the overall performance of the LED activities and in shaping the community's attitudes positively towards it.

In addition to the above problems, literatures indicated that Personal barriers for example the sense of personal powerlessness; Institutional and political barriers; Economic and cultural barriers and Technical barriers such as the lack of accessible formats and technological support for groups to enable service users to participate effectively are the major problems that hamper the communities participation in PLCEDW in their locality.

In this regard the information obtained from the key informants, the focus group discussion and observation indicated that, the communities did not have the initiative to go to the PLCEDW and involve in. This is mainly created by the attitude of the community against themselves that, they can't do anything more than the active individuals who are involved in the PLCEDW. This is a kind of personal barrier for the participation of the community in their locality economic development in the study area.

Institutional and political barriers are also observed in the study area. Small group of people who have formal or informal relation with the government officials and the coordination office are having an advantage over the other communities. The formal

meetings are not conducted with free participation of the committees with free thinking and idea flow. The participants in the meetings don't want to have trouble with the coordinators in the sub-city or city administration. Hence this creates carelessness for the developmental activities undertaken in the locality and lack of participation.

Economic and cultural barriers also observed in the PLCEDWs in the study areas. Financial problem of the community to contribute for the development projects and the undeveloped culture of the community to participate in their locality economic development practices is another problem observed and elicited from the key informants.

Technical barriers are also observed in the study areas. There are no trained community participation professionals in sub-city or in woreda administration offices. Research and development works are not done to bring new ideas to the PLCEDW in the study areas. The PLCEDW also lacks technological support. The committees have no permanent office (place) to conduct the meetings. They are using the community policing posts as a meeting room.

The above described barriers are the core problems that are observed and elicited from the key informants.

The barriers if not tackled early are the killers of community participation on the study areas. Beside this the absence of participation in local community economic development work has multiple disadvantages for the communities. The positive things that everyone is expected to obtain from participation in the PLCEDW will be lost if real participation is not there. In this regard, the following piece of analysis clearly indicated the things that are lost by the absence of participation in PLCEDW.

Zadeh and Ahmad 2009, stated that, Participation is a good thing and important for many reasons and it has a benefits for the individuals of the community in creating awareness about the developmental activities being undertaken in their locality, creates confidence on the fairness of the developmental activities in their locality, help to obtain the opportunity to provide new ideas in the LED planning, improve effectiveness and efficiency in local economic development (see on pages **34 & 35**).

Table: 4.13. *Response on the importance of participation in LED activities*

NO	Description	Number	Percent	Percent
1.	Awareness of the problems and solutions of LED	57	16.28%	-83.72%
2.	Confidence in the fairness of the LED activities	89	25.42%	-74.58%
3.	To provide brand new ideas in development plans	75	21.42%	-78.58%
4.	Effectiveness and efficiency in conducting LED	43	12.28%	-87.72%

Source: Field work, February 2018.

As you can see in Table 4.13 the respondents who have been participating in LEDWs believed that they gain an advantage of having awareness about and confidence on its fairness of the local economic development as well as having a golden opportunity to provide brand new ideas on the planning process of the LED activities. Among the respondents **16.28%** of them responded that being participating in the LED activities in their locality enabled them to have awareness on the all developmental activities undertaken in their locality and **25.42%** of the respondents replied that being involved in the PLED activities in their locality helped them to have confidence on the fairness of the activities undertaken.

21.42% of the respondents replied that they gained the opportunity to provide new ideas and suggestions in the PLED in their locality and **12.28%** of the respondents are contributed for the efficiency and effectiveness of the PLED activities (**Note:** the No and % of the respondents under each single description is counted out of the total population i.e. out of **350** or **100%**). The analysis in this context is not only displaying the advantages of participating in PLED activities gained by such a small percentage of the community but to disclose such an advantage lost by the majority of the community.

As you can see in the table 4.13, the majority of the communities didn't obtain the advantages expected from participating in LED of their locality. **83.72%** of the communities have no awareness regarding the LED activities their problems and possible solutions; **74.58%** have no confidence on the fairness of the developmental activities undertaken in their locality; **78.58%** of the respondents lost the opportunity to provide

new ideas in the planning process of the LEDW and **87.72%** of the respondents replied that because of not participating in the LED of their locality they are unable to contribute their part in the effectiveness and efficiency of the developmental activities of their locality.

Generally a hand full of active communities are participating in the PLCEDW and the majority of the community are not active participants hence they are not enjoying their chance to be the part of the PLCEDW.

In connection to this, the level of the community participation in PLCEDW of their locality is surveyed among the respondents and Table summarizes the total responses. The question was how do the participants evaluate degree of participation of the local community in different matters concerning their locality?

Table: 4.14. *The level of the community’s participation in LED of their locality*

No	Description	Number	Percent
1.	Very good	29	8.29%
2.	Good	33	9.43%
3.	Medium	46	13.14%
4.	Low	117	33.43%
5.	Very low	125	35.71%

Source: Field work, February 2018

As it can be seen in table 4.14, regarding the level of the community’s participation in the developmental activities being underway in their locality **8.29%** of the respondents replied that the community’s participation in PLCEDW in a Very Good level. **9.43%** of the respondents put it under the Good level while **13.14%** of the respondents put it under Medium level and the remaining **69.14%** of the respondents put the level of the community’s participation under Low and Very Low level.

Beside this in the literature review the common elements of community participation according to USDA, 2000 are: many people, many centered, open and advertised, open to all ideas, inclusive and diverse, open mind, open process (see pages 28 – 34). All components when comprehended together will mean that the PLCEDW must have to

embrace all components of the community, invite all the community in decision making and accepting ideas of the community and open and transparent finance management.

In this case the key informants from the committees and from the government officials revealed that a kind of structure in the PLCEDW system is never existed and all the communities are treated massively. There is no any stratification of the community based on any relevant criteria like, income, age, sex, disability, etc. to enable them take part in PLEDWs. On the other hand the selected respondents also strengthen the information obtained selected respondents also strengthen the information obtained from the key informants.

(Table 4.15 shows the answer of the respondents for the question did the PLCEDW in your locality comprehend all the kinds of communities in the locality?).

Table: 4.15. *Response on the comprehensiveness of the PLCEDW*

No	Description	No	Percent
1	Yes	29	8.29%
2	No	321	91.71%
Sum Total		350	100%

Source: Field work February 2018.

As it can be seen in table 4.15, among the respondents, 91.71% replied that the PLCEDW in their locality is not comprehensive of all kinds of the community because of the massive treatment of the heterogeneous community. To address all the communities in mobilizing for PLEDWs categorizing the community based on common criteria such as age, sex, disability and others. This category gives the opportunity to address all the communities in the locality.

In the literature review five forms of community participations are discussed (see pages 21). The first is **Manipulation participation** which is the participation of the community for exploitative reasons. The second is **Information participation** in which many projects masquerade as being participatory but local government only impart or communities provide information. The third one is **Consultation participation** form of participatory

service delivery found in local governments with positive intensions towards participation, some limited capacity building, but little of process.

The fourth form is **Co-operation participation** that is stronger form of community decision making normally promoted by local government after some capacity building or policy change (or maybe facilitated by NGOs) the last one is **Mobilization participation** in which communities are in control of decision making process and local government enter in to initiatives as required by the community.

In this regard based on the data obtained so far regarding the participation of the community and analysis made on the data, the form of participation displayed in the study areas are manipulation participation and information participation. The communities are participating by contributing money, knowledge and expertise not in decision making and development planning (see the analysis on page- 66). The communities are there for giving service and for contributing money.

Key informants revealed that some information is disclosed for the community by the government officials in the way the government officials need to be delivered. But from document analysis and FGD, it can be inferred that even information participation is not fully existed in the study areas. Because all the data on hand shows that there is no formal way of disclosing information (development success, failure) for the community. Hence the form of participation in the study areas is manipulation participation and to some extent information participation.

4.7 PLCEDW Actors' coordination and the community attitude towards developmental activities

The relationship between the three bodies in PLCEDW i.e. the community at large, the government officials and different committees is measured in the interaction of the entities in PLCEDW in different work processes like, planning, executing, evaluating and fund raising. Moreover, office of the PLCEDW coordinators must be available at convenient place and the committees and the communities must have regular time to discuss on the issues concerning their locality's economic development.

Table: 4.16. About the existence of government coordinators office in nearby

No	Description	No	Percent
1	Yes	275	78.57%
2	No	75	21.43%
Sum Total		350	100%

Source: Field work, February 2018

Regarding the existence of the government's coordination office to PLCEDW, the response of the respondents is summarized in table 4.16. As can be observed in the table above, participatory local economic development coordinators office are available in a nearby for the local community to oversee the total developmental activities in their jurisdiction. From this it can be inferred that a structure is available near to the local community to involve them in the development of their locality.

4.7.1 The coordination of the PLCEDW actors in Planning of Developmental Activities in three woredas

In planning developmental activities, the majority of community in a grassroots level is not participated. But the key informants revealed that the development plan is prepared in block and mender level and transferred to the Qetena development committee and the Qetena development committee discussed on it and sent a part of it which they believed worth worked with, to the woreda development main committee and the woreda main development main committee go through the same scrutiny and shortlist the plans to be sent to the sub-city development main committee.

And the sub-city development main committee did the same thing and passes it to the city level development committees and the city level development committees have the sole right to approve or throw the proposed need of development by the community in different levels.

The respondents said that the relationship between the communities and the committees and the government officials is only one directional in which a small segment of active communities participated in planning the local economic development works in their locality and pass it to the above echelon which they are not going to have the chance to go

further in keeping their prioritized development needs in consideration. Once they decided in the development activities and pass it to the next level, the final approved plan will be sent from the city and sub-city development committees. According to the information obtained from the construction and housing development office head of the woreda-2, the development committees in each woreda and ketena prepares their plan based on the leading plan designed by the construction and housing development office in sub-city and woreda level.

4.7.2 The coordination of the PLCEDW actors in implementation of Developmental Activities in three woredas

As discussed in the above topic, the development plans are prepared by the indirect influence of the government officials i.e. the lead plan is designed by the construction and housing development office and the plan from the community is approved by the woreda and ketena construction and housing development office. But when coming to the implementation of the development plans, the formation is changed-the community will come in front to do every activity planed by the government. The steering committees are not active like that of the development main committee in every developmental activity. The woreda development, qetena, mender and block development committees are the most active participants in implementation of developmental activities.

4.7.3 The coordination of the PLCEDW actors in Evaluation of Developmental Activities in three woredas

The developmental activities undertaken in the locality need to be evaluated by the local community, the committees, the government organizations and any other stake holders. This process will be the important field that the relationship of the entities (the government, the committees and the community) is observed in.

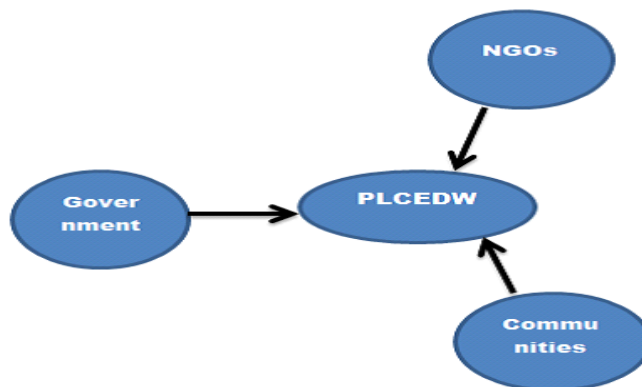
According to the information elicited from the key informants, the developmental activities undertaken by the PLCEDWS is evaluated by the government, the community members and the committees but when referring to the data obtained from survey among the total respondents 75 (21.43%) responded that they have participated in the evaluation of development projects. As per the community participation head of the sub city written

publications of the development projects and the overall work activity of the PLCEDWS, this on the other hand shows that there is a problem of publication of important things to disclose for the public rather development projects evaluated by the committees and experts on the development project inaugurated. The relationship of the three entities in this case is very limited.

4.7.4 The coordination of the PLCEDW actors in Fund Raising in three woredas

This is also one of the functions that the relationship between the government officials, committees and the communities is manifested in. The money to conduct the developmental activities is obtained from three sides i.e. from the community, from the NGOs and from the government.

Figure: 4.2. *The source of money for PLCEDW*



Source: researchers field work

Note: *The NGOs in this case include any entities except the government institutions.*

Such as: International organizations, endogenous NGOs, Civil societies, religious organizations etc.

The communities and the NGOs contribute money for the developmental activities. The mender and block committees perform the mobilization of the community and collect money from them on per-house base. And then the government provided some amount of money to be utilized in the development projects. The amount of money the government

provided is called Matching Fund. The communities and NGOs collect about 54% of the total amount of money for the project and government provide the remaining 46% of the total amount.

The most important thing to raise here is, the prevalence of evidences proved that, the communities are fully engaged in PLCEDW only by contributing money either voluntarily or nagged by the committees or the government. Table: 4.12, Responses on the plagues of community participation (Page - 63) revealed that 329 or 91.14% of the respondents said that hard issue bias 'which is a condition at which the communities are encouraged to contribute money not idea is most visible problem in their locality participatory economic development work.

4.8 Developmental Activities Undertaken by PLCEDWS in three woredas from 2011 up to 2017

The PLCEDW undertaken in the study woredas are: New toilet construction, Toilet maintenance, New kitchen construction, Road light (fixture), Road maintenance, New cobble stone construction, Sewerage Tube work, New open ditch, Tube maintenance, Environmental cleaning, Maintaining the home of the elders, Community police, Greening the condominium areas, Drinking water, Kitchen maintenance, New shower construction, Road light, Tube work and the like. These developmental activities are more of infrastructural in nature and they are important in furnishing the ground for other developmental activities. Tables 4.17 - 4.34 shows the developmental projects undertaken by the PLCEDWs from 2011 to 2017 in the study woredas.

4.9 Extent of community participation

The Literatures indicated that there are four key local economic development activities. The first is locality development in which the PLCEDWs furnish the environment for development activities. Providing land and other things which support the local economic development activities is one kind of locality development. City renewal and infrastructural improvement are the component of locality development. In this regard the data on hand shows that, the PLCEDWs are doing locality development activities, the

developmental activities undertaken by the PLCEDWs presented in tables 4.17 - 4.34, (**appendixes**) indicated that the PLCED is concentrated on locality development. Business development is the base for proliferation of other small and micro industries. Hence it can be generalized that the PLCEDW is effectively furnishing the ground for further development.

The second is business development in which the PLCEDW must create conducive environment for businesses to flourish and develop. Business support centers, research and development and business clusters are the most important things for business development. In the study areas the mechanism for supporting business activities are not yet established and research and development works either in private business research centers or government unit are not undertaken to support the small businesses in idea and expertise. Business integration and conglomeration also is absent despite its importance in boosting business opportunities and synergy. As per the interview conducted with the owner of sub-city community participation work process, a business network is not created by the PLCEDW. Market relationship between the PLCEDWs and the entrepreneurs and micro and small enterprises does not exist in the study areas.

This shows that the PLCEDWs are not furnishing the ground for business development. The business development alone is not the only contribution of the PLCEDW, hence third component i.e. advanced and developed communities, must be created as a result of the PLCEDW. The whole concept of human resource development is equipping the community with modern knowledge, skill and attitude. Investigation of the study areas in this regard is also conducted by interview, FGD and observation. The result shows that such kinds of activities are not undertaken in the study woredas. Therefore the PLCEDW should have to create developed community so as to create a community capable of strengthening the participatory community development works.

The other important component is creative cities and creative classes. These are also the things that are necessary to be existed in the PLCEDW. And as per the data on hand, neither of the two existed in the study areas. The creative cities are not there to allow the creative classes to bring new things for the locality development.

More over the local development projects undertaken by the PLCEDWs is scrutinized. All the three models have almost the same idea towards sustainability. Development comprehends social, environmental, economic and institutional imperative. The social imperative is all about human wellbeing in general (economic, social, political, and environmental). Economic imperative is all about the economic wellbeing of the community. Environmental imperative is about the environmental wellbeing. And the institutional imperative is about democracy, justice and so on. Hence to call the PLCEDW sustainable each of the dimensions of sustainability must be fulfilled.

The data on hand and the investigation conducted so far indicates that, the developmental activities are not improving the life of the community in a very good manner. Therefore the social imperative of sustainability of PLCEDW not fulfilled. Beside this the PLCEDW is not creating permanent job opportunity for the community. There is no business relation between the PLCEDW and the small and micro industries. In addition, the PLCEDW is not enabling small and micro industries to proliferate (see tables 4.17 – 4.34). Hence the PLCEDW didn't fulfill the economic imperative of the sustainability of economic development. Environmental imperative is the quality that the PLCEDW are environmental friendly. In this regard the PLCEDW done are environmental friendly (see the development projects in tables 4.17 – 4.34). The other is institutional imperative which includes democracy and distributive justice. In this imperative the PLCEDW underscored. Because the PLCEDW is not involving all the communities in the locality and there is no collective decision making, free and fair participation, genuine involvement in strategic planning and evaluation of LED, (see the analysis on the participation of the community)

4.10 Summery and major research findings

This study employed survey, interview, focus group discussion and observation for collecting relevant data from the community, government officials and the committees. From 4,391 total households in the three woredas, 366 households were selected as a sample in a stratified random sampling method (using probability sampling). But 390 questionnaires were administered by adding 24 questionnaires to avoid shrinkage due to

defective questionnaires. However the total questionnaires collected are 350. In addition to this, interview was conducted with 15 individuals from the committee members and the government officials in sub-city, woreda and qetena level. Two FGD is conducted.

As per the data obtained, the PLCEDW was started before four years. But the government gives emphasis and designed a legal frame to facilitate it in 2011. But because of the problem of record keeping by the city administration the developmental projects undertaken before the directive is put in effect are not recorded and remained as a legend. The local community knows that a kind of participatory community development work is done in their locality (90.57%) of the respondents knows the existence of PLCEDW in their locality but since no body invited them to be the part of it, they lost not only the involvement but also their attention towards the development projects being undertaken in their locality. Therefore the local community doesn't have any technical details about the PLCEDW.

General research findings

- I. The institutional frame works are very complex, confuse the community and the committees organize to coordinate the PLCEDW in city, sub-city and woreda level are too huge in number.
- II. The communities are fully engaged in PLCEDW only by contributing money either voluntarily or nagged by the committees or the government. The seven years (2011-2017) woredas PLED activities indicated that the participation bounded on locality development (furnish the environment for development activities) it is not in business development, creating advanced and developed communities and creative cities and creative classes).
- III. Lack of public interest to be involved in PLEDW because of institutional and political barriers.

CHAPTER FIVE

5 CONCLUSION AND RECOMMENDATION

5.1 Conclusion

The data obtained from survey also indicated that, the PLCEDW that are undertaken includes access road construction, drinking water pipe construction, health post construction, sports centers, housing for elders, kitchen construction and maintenance and security works among others. In these development undertakings, the communities are participating only by contributing money, labor and expertise.

The communities are not fully participating in development planning. Among the respondents 275 (78.57%) of them are not participated in planning of local community economic development activities.

The communities also responded on the level of community participation in their locality. Among the respondents 17.72% responded that community participation in their locality is good and very good. 13.14% of the respondents put the community participation in a medium level and the remaining 69.14% of the respondents give a low and very low level for the community participation in their locality.

There is no mechanism to enable different segment of the community (disabled people, youths, elders, women etc.) to involve in PLCEDW that means the PLCEDW is not comprehensive. 91.71% of the respondents responded that the PLCEDW in their locality didn't have the mechanism to comprehend all segment of the community.

The main obstacles of the communities to participate in the development projects undertaken in their locality are the lack of public interest in becoming involved, the inhibiting and prescriptive role of the state, over-reporting of development successes, selective participation, hard-issue bias, conflicting interest groups within end-beneficiary communities, gate-keeping by local elites, excessive pressures for immediate results, the accentuation of product at the expense of process and the paternalistic role of development professionals and officials.

The directive is put in effect in 2011 G.C. the directive described the duties and responsibilities of all the committees and other administrative procedures and finance administration but it failed to determine the way in which the communities shall be appointed (modus operandi). According to the data on hand, here is no any idea about how the directive is drafted who were there in the drafting phase. The directive is not introduced to the community. 205 (58.57%) of the respondents didn't know the existence of the directive to facilitate the developmental activities done in participation of the community.

There are also different committees appointed to facilitate the PLCEDW in city, sub-city and woreda levels. Steering Committee; City Development Council; Sub-city Development Council; Woreda development Council; Development committee; Woreda Development Main committee; Finance, Procurement and Material Management Sub Committee; Construction Follow-up, Care and Maintenance Sub Committee; Community Mobilization and Community Participation Plan Sub Committee; Audit Committee Mender and Block Development Committee; Qetena Development Committee. The committees are known by the majority of the community. They are selected by referendum in front of the residents of each woredas and Qetenas. But the functional communities are the development committees in sub-city and woreda levels, the voluntary participants living in the locality and meetings and discussions are held at times when the committees finish their personal jobs. Sometimes the meetings of the committees are conducted in the weekends and after work time after 12:00 PM.

The relationship between the committees, the government officials and the communities is vital thing for the strengthening of the community's participation in local economic development. But in this study it is proved that the relationship is loose.

Different developmental projects have been undertaken in the study woredas. They are: New toilet construction, Toilet maintenance, New kitchen construction, Road light (fixture), Road maintenance, New cobble stone construction, Sewerage Tube work, New open ditch, Tube maintenance, Environmental cleaning, Maintaining the home of the elders, Community police, Greening the environment , Drinking water, Kitchen

maintenance, New shower construction, Road light, Tube work and the like. The development projects undertaken by the PLCEDWs are not sustainable. The PLCEDW undertaken are not able to mobilize the local economy. Hence the PLCEDW are not significantly affecting the life of the community.

5.2 Recommendation

Based on the data obtained and the analysis conducted the following recommendations are forwarded:

5.2.1 Institutional frame work and development plan

The development plans are prepared by the community at the grassroots level but the sub-city administration discussed on it and decided exclusively and sends the approved plan for the committees. In doing so the development needs prioritized by the local community modified/changed in the way that have no value for the community. Most of the time the development needs identified by the communities is not included in the final approved plan from the sub-city PLED coordination office. This condition created dissatisfaction in the community. There for it can be concluded that, the development plans are not fully prepared by the community. This has negative impact on the community's attitude towards PLCEDW done in their locality. To avoid this problem collective decision making by the government officials, the committees and the communities during the prioritization of the development projects is necessary. In case of exclusion of development projects proposed by the community, the reason must be clearly communicated for the community clearly.

5.2.2 Extent of community participation

The local community in the study woredas knows about the existence of PLCEDW in their locality but most of the communities are not active participants in development activities of their locality. The reason is there is no awareness creation work by the side of the government and the committees. Hence the communities didn't know that participatory effort towards local economic development will really change improve life. Therefore communities are not fully involved in their locality economic development. Few numbers of the communities are participating but the majority is not. Especially the lack of

participatory effort in planning of the local economic development is damaging the community's initiative to be the part of the PLEDW. Hence a wide campaign of awareness creation must be done. Motivating the community in collective decision making and image building by the concerned bodies is necessary to attract the communities towards the LEDWs.

5.2.3 Challenges of public participation

The PLCEDW is intended to be coordinated by the higher government officials who are the chief executive and director of different government and non-government organizations. But these higher officials are too busy to take care of it. Most of the coordination of the PLCEDW is rested on the shoulder of the development committees in the sub-city and woreda level. All the committees in each level are not a permanent fulltime employees assigned to coordinate the PLCEDWs. This created a problem of coordination. There is also a shortage of expertise in the area. And it lacks top management support. Hence the higher officials must turn their attention to PLCEDW.

The relationship between the communities, the committees and the government officials is **loose**. There is no regular time that they come together and discuss directly with the community at large regarding local community economic development works. Therefore the community, the committees and the government officials must come together regularly and discuss on matters affecting the life of the local community.

In addition to the above problems, literatures indicated that Personal barriers for example the sense of personal powerlessness; Institutional and political barriers; Economic and cultural barriers and Technical barriers such as the lack of accessible formats and technological support for groups to enable service users to participate effectively are the major problems that hamper the communities participation in PLCEDW in their locality.

In this regard the information obtained from the key informants, the focus group discussion and observation indicated that, the communities did not have the initiative to go to the PLCEDW and involve in. This is mainly created by the attitude of the community against themselves that, they can't do anything more than the active individuals who are

involved in the PLCEDW. This is a kind of personal barrier for the participation of the community in their locality economic development in the study area.

5.2.4 Attitudinal and other barriers

Institutional and political barriers are also observed in the study area. Small group of people who have formal or informal relation with the government officials and the coordination office are having an advantage over the other communities. The formal meetings are not conducted with free participation of the committees with free thinking and idea flow. The participants in the meetings don't want to have trouble with the coordinators in the sub-city or city administration. Hence this creates carelessness for the developmental activities undertaken in the locality and lack of participation.

Economic and cultural barriers also observed in the PLCEDWs in the study areas. Financial problem of the community to contribute for the development projects and the undeveloped culture of the community to participate in their locality economic development practices is another problem observed and elicited from the key informant.

Participation is a good thing and important for many reasons and it has a benefits for the individuals of the community in creating awareness about the developmental activities being undertaken in their locality, creates confidence on the fairness of the developmental activities in their locality, help to obtain the opportunity to provide new ideas in the LED planning, improve effectiveness and efficiency in local economic development.

5.2.5 Need to have Vibrant Committees

The study also tried to assess the work activity of the committees, their appointment process and their composition. There are about 12 committees organized in each sub-city and woreda from the city steering committee to the 1 to 5 development committees. The structure of the PLCEDW coordination committees is very complex with a chain of different steering committees, development committees and development councils. Each committee has their own duties and responsibilities. But the duties and responsibilities listed out in the directive can be effectively performed by some of the committees. Hence

the PLCEDW is coordinated by large number of committees with tall hierarchical structure.

Generally the problem of PLCEDW is that, the communities are not fully involved in it and majority of the community have no sense of the participatory community development works undertaken in their locality. And the advantage of participation in participatory development work is not known by the community. Hence the city administration must have to create awareness for the community about the importance of participatory community economic development. More over letting the community to involve in decision making about the development projects in their locality will help to catch up their attention.

References

- Adams et al, (2007) *Research methods for Graduate Business and Social Science Students*:published by VivicMahara for Response Books. New Delhi.(select , ri cl ,paragra , spe , hangign .. ok)
- Arora, R.K., 1979. *People's Participation in Development Process*, Jaipur: HCM SIPA.
- Asthana, S. (1994) *Integrated slum improvement in Visakhapatnam, India: problems and prospects*. Habitat International: A Journal for the Study of Human Settlements, (1), 57–70.
- Blakely, E. J. (c1989) *Planning Local Economic Development: Theory and Practise*,Newbury Park, California: Sage Publications.
- Blakely, E. J. and Leigh, N. (2010) *Planning Local Economic Development: Theory and Practice*, Thousand Oaks: Sage Publications.
- Breuer, D., 1999.*Community Participation in Local Health and Sustainable Development: a working document on approaches and techniques European Sustainable Development and Health Series*: World Health Organization, pp: 9-10.
- C. R. Kothari (2004). *Research Methodology: Methods and Techniques*: New Age International (P) Ltd., Publishers: New Delhi
- C. William Emory. (1980). *Business Research Methods*: Richard. D. Irwin INC publisher, USA, Homewood, Illinois 60430.
- Chambers, R., (1983), *Rural Development: Putting the Last First*,John Wiley and Sons, New York.
- Chambers, R., (1994), '*Participatory Rural Appraisal (PRA): analysis of experience*',*World Development*, 22(9), 1253-1268.
- Cooke, P. and Lazzarotti, L. (eds) (2008). *Creative Cities, Cultural Clusters and Local Economic Development, Cheltenham*: Edward Elgar Publishing Limited.
- Daly, H. E. and Cobb, J. B. Jr, (1989), *For the Common Good: Redirecting the Economy towards Community, the Environment, and a Sustainable Future*,Beacon Press, Boston, MA.

- David Pearce, Edward Barbier & Anil Markandya. (1990) *Sustainable Development: Economics and Environment in the Third World*. By the Authors of Blueprint for a Green Economy: Edward Elgar Publishing Limited: London.
- Donald H. Mc Burney. (1998) *Research Methods, 4th edition*: Brooks/Cole publishing Company, an International Thompson Publishing Company
- Henderson, J. V. (2009) 'Cities and Development', *Journal of Regional Science* 50(1): 515-540.
- International Labor Organization (ILO) (2013). Local economic development (LED): <http://www.ilo.org/global/topics/employment-promotion/local-economic-development/lang--en/index.htm>: Accessed on 28, Dec, 2013.
- J. Norman Reid (2000) *Community Participation: How People Power Brings Sustainable Benefits to Communities*. USDA Rural Development Office of Community Development
- James M. Cypher and James L. Dietz. (1997) *the Process of Economic Development*: Routledge 11 New Fetter Lane, London EC4P4EE (P-49).
- Jeffrey Haynes (2008) *Development Studies*: Polity Press, 65 Bridge Street Cambridge CB2 1UR, UK and 350 Main Street Malden, MA 02148, USA (P-1).
- John P. Blair & Michael C. Carroll. (2009) *Local Economic Development: Analysis Practices and Globalization*, 2nd edition: SAGE Publications, Inc. California (P-13).
- Jonker J. & Pennink B. (2010). *The Essence of Research Methodology: A Concise Guide for Master and PhD Students in Management Science*: Springer Heidelberg Dordrecht: London New York
- Lepenies, P., (2008) *an Inquiry into the Roots of the Modern Concept of Development: Contributions to the History of Concepts 4* (2008) 202-225. KfW Entwicklungsbank, Frankfurt.
- Lucius Bots and Dingie van Rensburg (2000). *Community Participation in Development: Nine Plagues and Twelve Commandments*. Volume 35, Number 1, Oxford University press and the Community Development Journal
- McCann, P. (2001) *Urban and Regional Economics*, New York: Oxford University Press Inc.

Merriam-Webster, Oxford dictionary, free online dictionary, accessed on November 11, 2013

JMeyer, J. R. (2000) *'The Role of Industrial and Post-Industrial Cities in Economic Development'* Draft paper prepared for the World Bank Urban Development Division's research project entitled 'Revising Development - Urban Perspectives

Midgley, James (1986) *Community participation, social development, and the state:* Methuen (London and New York)

MINISTRY OF WORKS AND URBAN DEVELOPMENT, Federal Urban Planning Institute (2006). *Local economic development strategy manual*, MATHEWOS Consult Architectural, Engineering, Urban Planning, Urban Development and Urban management consults: Addis Ababa, Ethiopia.

Nel, E. (2001) *'Local Economic Development: A Review and Assessment of its Current Status in South Africa'*, *Urban Studies* 38(7): 1003 - 1024.

Ponzini, D. and Rossi, U. (2010) *'Becoming a Creative City: The Entrepreneurial Mayor, Network Politics and the Promise of an Urban Renaissance'*, *Urban Studies* 47(5): 1073-1057.

Porter, Michael E. (1990). *The competitive advantage of nations*, Palgrave: Macmillan, New York.

Porter, Michael E. (1998). *The competitive advantage of nations: with a new introduction.* Palgrave: New York.

Prof. Dr. SamyTayie (2005) *Research Methods and Writing Research Proposals:* Published by

Rees, W. and Wackernagel, M., (1996), *Our Ecological Footprint: Reducing Human Impact on the Earth*, New Society Publishers, Gabriola Island, British Columbia.

Renjit Kumar. (1996) *Research Methodology: A Step By Step Guide For Beginners:* SAGE Publication: London EC2A 4PU.

Shiva, V., (1989), *Staying Alive: Women, Ecology and Development*, Zed Books, London.

Swimme, B. and Berry, T., (1992), *The Universe Story*, Harper San Francisco, San Francisco, CA.

Swinburne, G (2006) *Local Economic Development (LED) Quick Reference*, Urban Development Unit, the World Bank, Washington D.C., USA. January 2006.

www.worldbank.org/urban/led accessed on 01/05/09

- T.S.Wilkinson & P.L. Bhandarkar. (1992) *Methodology and Techniques of Research*: HIMALYA PUBLISHING HOUSE: India.
- Tando, R., (1988), '*Social transformation and participatory research*', *Convergence*, 21(2/3).
- Tegegne, G. (Team Leader) and Richard, C. with contributions from Zini Godden (2011). *Assessment of Local Economic Development (LED) Approach in Ethiopia*: A Report submitted to United Nations Development Program me and Ministry of Finance and Economic Development of the Government of Ethiopia.
- The World Bank group (2004). *A brief history of Local Economic Development*: <http://go.worldbank.org/XC74PWPTZ0> (Accessed on January 14, 2014).
- The World Bank Group (2011). *What is Local Economic Development (LED)?* <http://go.worldbank.org/EA784ZB3F0>: Accessed 3, Jan, 2014.
- Turner, M. & Beresford, P (2005), *Contributing on Equal Terms: Service User Involvement and the Benefits System*, London: Social Care Institute for Excellence. <http://www.scie.org.uk/publications/reports/report08.pdf>.
- United Nation's University (2006) *The Politics of Participation in Sustainable Development Governance*, edited by Jessica F., & W. Bradnee C. United Nation's University press: Tokyo, New York, Paris.
- World Bank. (1995) *Understanding community participation*: [Lyceumbooks.com/pdf/Effective community Chapter 02 \(P -7\)](http://Lyceumbooks.com/pdf/Effective%20community%20Chapter%2002%20(P-7).pdf) Accessed on 23/ Nov. / 2013.
- Yigitcanlar, T., O'Connor, K. and Westerman, C. (2008) '*the making of knowledge cities: Melbourne's knowledge-based urban development experience*', *Cities* 25(2): 63-72.
- Zadeh, B. and Ahmad, N. (2010) *Participation and Community Development*. *Current Research Journal of Social Sciences* 2(1): 13-14, 2010: Department of Social and Development Sciences, Faculty of Human Ecology, University Putra Malaysia, 43400 UPM, Serdang, Selangor, Malaysia: Maxwell Scientific Organization, 2009

Appendixes

Appendix – 1 Developmental Activities Undertaken by PLCEDWS in three woredas from 2011 up to 2017

Table: 1. Annual development plan and achievements of PLCEDW in woreda 01 as of 2011/2012

No	Types of development activity	Measurement	Annual plan	annual achievement	percent	Remark
1.	New toilet construction	Number	4	1	25%	NGOs
2.	Toilet maintenance	Number	-	-	-	Not worked
3.	Road light (fixture)	Number	50	25	50%	
4.	New cobble stone construction	Kilo meter	1	0.4	40%	
5.	Tube work	Kilo meter	5	3	60%	
6.	New open ditch	Kilo meter	1	0.4	40%	
7.	Tube maintenance	Meter	300	100	33.33%	
8.	Environmental cleaning	Kilo meter	150	-	-	Not worked
9.	Community police station	Number	2	1	50%	
10.	Drinking water	Number	3	1	33.33%	NGOs

Table: 2. Annual development Plan and achievements of PLCEDW in Woreda 01 as of 2012/13

No	Types of development activity	Measurement	Annual plan	Annual achievement	percent	Remark
1.	New toilet construction	Number	4	2	50%	NGO
2.	Toilet maintenance	Number	2	1	50%	
3.	New kitchen construction	Number	-	-	-	
4.	Road maintenance	Meter	240	170	70.83%	
5.	New cobble stone construction	Kilo meter	2	1	50%	
6.	Tube work	Meter	300	100	33.33%	
7.	New open ditch	Meter	-	143	-	
8.	Tube maintenance	Meter	700	320	45.71%	
9.	Drinking water(Bono)	Number	7	2	28.57%	NGO

Table: 3. Annual development Plan and achievements of PLCEDW in Woreda 01 as of 2013/14

No	Types of development activity	Measurement	Annual plan	Annual achievement	Percent %	Remark
1.	New toilet construction	Number	10	3	30%	NGO
2.	Toilet maintenance	Number	20	5	25%	
3.	New kitchen construction	Number	5	-	-	Not worked
4.	Road maintenance	Kilo meter	4	1	25%	
5.	New cobble stone construction	Meter	300	100	33.33%	
6.	Tube work	Meter	150	-	-	Not worked
7.	New open ditch	Meter	100	25	25%	
8.	Tube maintenance	Meter	100	-	-	Not worked
9.	Greening environment	Square kilo meter	600	-	-	Not worked
10.	Community police station	Number	3	1	33.33%	

Table: 4. Annual development Plan and achievements of PLCEDW in Woreda 01 as of 2014/15

No	Types of development activity	Measurement	Annual plan	Annual achievement	percent	Remark
1.	New toilet construction	Number	9	7	77.77%	NGO
2.	Toilet maintenance	Number	17	12	70.59%	
3.	New kitchen construction	Number	7	-	-	
4.	Road maintenance	Kilo meter	3	2	66.66%	
5.	New cobble stone construction	Kilo meter	2	1	50%	
6.	Tube work	Meter	100	57	57%	
7.	New open ditch	Kilo meter	2	1	50%	
8.	Tube maintenance	Meter	300	250	83.33%	
9.	Community discussion	Number	1	1	100%	
10.	Road light fixture	Number	56	45	80.36%	
11.	Drinking water(Bono)	Number	2	1	50%	NGOs
12.	Community police station	Number	2	1	50%	

Table: 5. Annual development Plan and achievements of PLCEDW in Woreda 01 as of 2015/16

No	Types of development activity	Measurement	Annual plan	Annual achievement	percent	Remark
1.	New toilet construction	Number	10	2	20%	NGO
2.	Toilet maintenance	Number	20	3	15%	
3.	New kitchen construction	Number	7	-	-	Not worked
4.	Road maintenance	Meter	800	400	50%	
5.	New cobble stone construction	Meter	300	100	33.33%	
6.	Tube work	Meter	100	25	25%	
7.	New open ditch	Meter	100	-	-	Not worked
8.	Tube maintenance	Meter	75	-	-	Not worked
9.	Community discussion	Number	2	1	50%	
10.	Road light fixture	Number	36	20	55.55%	
11	Drinking water(Bono)	Number	2	-	-	Not worked

Table: 6. Annual development Plan and achievements of PLCEDW in Woreda 01 as of 2016/17

No	Types of development activity	Measurement	Annual plan	Annual achievement	percent	Remark
1.	New toilet construction	Number	10	4	40%	NGO
2.	Toilet maintenance	Number	20	7	35%	
3.	New kitchen construction	Number	7	1	14.29%	
4.	Road maintenance	Meter	200	500	55.55%	
5.	New cobble stone construction	Meter	300	150	50%	
6.	Tube work	Meter	100	90	90%	
7.	New open ditch	Meter	300	150	50%	
8.	Tube maintenance	Meter	100	50	50%	
9.	Greening environment	Square kilo meter	200	50	25%	
10.	Drinking water(Bono)	Number	4	3	75%	NGO
11	Planting trees	Number	400	370	92.5%	
12	Road light fixtures	Number	40	70	175%	

Table: 7. Annual development Plan and achievements of PLCEDW in Woreda 02 as of 2011/12

No	Types of development activity	Measurement	Annual plan	Annual achievement	Percent	Remark
1.	New toilet construction	Number	2	1	50%	NGO
2.	Toilet maintenance	Number	4	2	50%	
3.	New kitchen construction	Number	1	-	-	
4.	Road maintenance	Meter	200	120	60%	
5.	New cobble stone construction	Meter	400	370	92.5%	
6.	Tube work	Meter	300	-	-	Not worked
7.	New open ditch	Meter	400	370	92.5%	
8.	Tube maintenance	Meter	100	-	-	
9.	Greening environment	Square kilo Meter	-	-	-	Not worked
10.	Drinking water (Bono)	Number	3	1	33.33%	NGO
11	Road light(fixture)	Number	50	10	20%	
12	Plant cultivation	Number	100	100	100%	Volunteers
13	Recreation center	Number	2	1	50%	

Table: 8. Annual development Plan and achievements of PLCEDW in Woreda 02 as of 2012/13

No	Types of development activity	Measurement	Annual plan	Annual achievement	Percent	Remark
1.	New toilet construction	Number	4	1	25%	NGO
2.	Toilet maintenance	Number	3	1	33.33%	
3.	New kitchen construction	Number	-	-	-	Not worked
4.	Road maintenance	Meter	300	200	66.66%	
5.	New cobble stone construction	Meter	300	170	56.66%	
6.	Tube work	Meter	-	-	-	Not worked
7.	New open ditch	Meter	300	170	56.66%	
8.	Tube maintenance	Meter	100	-	-	Not worked
9.	Greening environment	Square kilo Meter	170	-	-	Not worked
10	Recreation center	Number	1	1	100%	
11	Planting trees	Number	200	200	100%	

Table: 9. Annual development Plan and achievements of PLCEDW in Woreda 02 as of 2013/14

No	Types of development activity	Measurement	Annual plan	Annual achievement	percent	Remark
1.	New toilet construction	Number	2	-	-	Not worked
2.	Toilet maintenance	Number	7	1	14.29%	
3.	New kitchen construction	Number	5	-	-	Not worked
4.	Bridge construction	Number	1	1	100%	
5.	New cobble stone construction	meter	400	276	56.50%	
6.	Tube work	meter	400	340	85%	
7.	New open ditch	meter		401	-	
8.	Tube maintenance	meter	200	100	50%	
9.	Greening environment	Square kilo Meter	280	142	50.71%	
10.	Drinking water(Bono)	Number	2	1	50%	
11	Community police station	Number	2	1	50%	
12	Job creation	Number	280	-	-	Not worked

Table: 10. Annual development Plan and achievements of PLCEDW in Woreda 02 as of 2014/15

No	Types of development activity	Measurement	Annual plan	Annual achievement	percent	Remark
1.	New toilet construction	Number	2	1	58%	
2.	Toilet maintenance	Number	7	3	42.86%	
3.	New kitchen construction	Number	5	-	-	Not worked
4.	Road maintenance	Meter	250	170	68%	
5.	New cobble stone construction	Meter	500	450	90%	
6.	Tube work	Meter	100	-	-	Not worked
7.	New open ditch	Meter	100	-	-	Not worked
8.	Tube maintenance	Meter	200	150	75%	
9.	Greening environment	Square kilo Meter	350	250	71.43%	
10.	Drinking water	Number	2	1	5%	
11	Community police station	Number	3	1	33.33%	
12	Jib creation	Number	400	320	80%	
13	Bridge construction	Number	3	1	33.33%	

Table: 11. Annual development Plan and achievements of PLCEDW in Woreda 02 as of 2015/16

No	Types of development activity	Measurement	Annual plan	Annual achievement	percent	Remark
1.	New toilet construction	Number	-	-	-	NGOs
2.	Toilet maintenance	Number	5	5	100%	
3.	New kitchen construction	Number	-	-	-	
4.	Road maintenance	meter	-	-	-	
5.	New cobble stone construction	meter	420	105	25%	
6.	Tube work	meter	200	130	65%	
7.	New open ditch	meter	500	270	54%	
8.	Tube maintenance	meter	300	100	33.33%	
9.	Greening environment	Square kilo Meter	240	140	58.33%	
10.	Drinking water (Bono)	Number	5	1	20%	NGOs
11	Police station	Number	-	-	-	
12	Planting trees	Number	900	1000	111%	

Table: 12. Annual development Plan and achievements of PLCEDW in Woreda 02 as of 2016/17

No	Types of development activity	Measurement	Annual plan	Annual achievement	Percent	Remark
1.	New toilet construction	Number	3	1	33.33%	NGOs
2.	Toilet maintenance	Number	8	3	37.50%	
3.	New kitchen construction	Number	-	-	-	
4.	Road maintenance	meter	-	-	-	
5.	New cobble stone construction	meter	500	190	38%	
6.	Tube work	meter	300	142	47.33%	
7.	New open ditch	meter	150	-	-	
8.	Tube maintenance	meter	220	120	54%	
9.	Greening environment	Square kilo Meter	200	170	85%	
10.	Drinking water(Bono)	Number	3	1	33.33%	NGOs
11	Bridge construction	Number	2	1	5%	
12	Planting trees	Number	1000	1700	170%	
13	Community police station	Number	3	1	33.33%	

Table: 13. Annual development Plan and achievements of PLCEDW in Woreda 03 as of 2011/12

No	Types of development activity	Measurement	Annual plan	Annual achievement	percent	Remark
1.	New toilet construction	Number	2	1	50%	NGO
2.	Toilet maintenance	Number	3	1	33.33%	
3.	New kitchen construction	Number	2	-	-	Not worked
4.	Road maintenance	Number	150	55	36.66%	
5.	New cobble stone construction	meter	300	90	30%	
6.	Tube work	meter	100	75	75%	
7.	New open ditch	meter	300	130	43.33%	
8.	Tube maintenance	meter	170	75	44.12%	
9.	Greening environment	Square kilo Meter	250	-	-	Not worked
10.	Drinking water (Bono)	Number	3	-	-	Not worked
11	Road light(fixture)	Number	60	35	58.33%	
12	Job creation	Number	300	95	31.67%	
13	Planting trees	Number	400	-	-	Not worked

Table: 14. Annual development Plan and achievements of PLCEDW in Woreda 03 as of 2012/13

No	Types of development activity	Measurement	Annual plan	Annual achievement	percent	Remark
1.	New toilet construction	Number	4	1	25%	NGO
2.	Toilet maintenance	Number	7	2	28.57%	
3.	New kitchen construction	Number	-	-	-	Not worked
4.	Road maintenance	Meter	200	70	35%	
5.	New cobble stone construction	Meter	300	-	-	Not worked
6.	Tube work	Meter	150	95	63.33%	
7.	New open ditch	Meter	-	-	-	Not worked
8.	Tube maintenance	Meter	200	170	85%	
9.	Greening environment	Square kilo Meter	250	100	40%	
10.	Drinking water(Bono)	Number	4	2	50%	NGO
11	Job creation	Number	300	155	51.67%	
12	Road light(fixture)	Number	60	40	66.66%	
13	Planting trees	Number	400	500	125%	

Table: 15. Annual development Plan and achievements of PLCEDW in Woreda 03 as of 2013/14

No	Types of development activity	Measurement	Annual plan	Annual achievement	percent	Remark
1.	New toilet construction	Number	2	1	50%	NGOs
2.	Toilet maintenance	Number	5	1	20%	
3.	New kitchen construction	Number	-	-	-	
4.	Bridge construction	Meter	200	200	100%	
5.	New cobble stone construction	Meter	400	350	87.50%	
6.	Tube work	Meter	200	120	60%	
7.	New open ditch	Meter	400	350	87.50%	
8.	Tube maintenance	Meter	100	-	-	Not worked
9.	Greening environment	Square kilo Meter	150	50	33.33%	
10.	Drinking water(Bono)	Number	1	1	100%	NGOs
11	Bridge construction	Number	2	1	50%	

Table: 16. Annual development Plan and achievements of PLCEDW in Woreda 03 as of 2014/15

No	Types of development activity	Measurement	Annual plan	Annual achievement	percent	Remark
1.	New toilet construction	Number	3	1	33.33%	NGO
2.	Toilet maintenance	Number	7	4	57.14%	
3.	New kitchen construction	Number	-	-	-	
4.	Road maintenance	Meter	400	-	-	Not worked
5.	New cobble stone construction	Meter	500	390	78%	
6.	Tube work	Meter	200	59	29.50%	
7.	New open ditch	Meter	500	390	78%	
8.	Tube maintenance	Meter	100	100	100%	
9.	Greening environment	Square kilo Meter	150	-	-	Not worked
10.	Drinking water(Bono)	Number	3	1	33.33%	NGO
11	Road light fixture	Number	40	35	87.50%	
12	Bridge construction	Number	2	-	-	Not worked

Table: 17. Annual development Plan and achievements of PLCEDW in Woreda 03 as of 2015/16

No	Types of development activity	Measurement	Annual plan	Annual achievement	Percent	Remark
1.	New toilet construction	Number	3	1	33.33%	NGOs
2.	Toilet maintenance	Number	5	2	40%	
3.	New kitchen construction	Number	5	1	20%	
4.	Road maintenance	Meter	300	260	86.60%	
5.	New cobble stone construction	Meter	500	200	40%	
6.	Tube work	Meter	300	-	-	Not worked
7.	New open ditch	Meter	1000	200	90%	
8.	Tube maintenance	Meter	200	150	75%	
9.	Greening environment	Square kilo Meter	200	170	85%	
10.	Drinking water(Bono)	Number	3	1	33.33%	NGOs
12	Road light fixture	Number	70	40	57.14%	

Table: 18. Annual development Plan and achievements of PLCEDW in Woreda 03 as of 2016/17

No	Types of development activity	Measurement	Annual plan	Annual achievement	percent	Remark
1.	New toilet construction	Number	4	2	50%	NGOs
2.	Toilet maintenance	Number	9	4	44.44%	
3.	New kitchen construction	Number	2	1	50%	
4.	Road maintenance	Meter	-	-	-	
5.	New cobble stone construction	Meter	500	320	64%	
6.	Tube work	Meter	100	70	70%	
7.	New open ditch	Meter	500	320	64%	
8.	Tube maintenance	Meter	-	-	-	
9.	Greening environment	Square kilo Meter	200	120	60%	
10.	Drinking water(Bono)	Number	4	1	25%	NGOs
11	Community police station	Number	4	1	25%	
12	planting trees	Number	1000	1200	120%	

Appendix - 2

1. Questionnaire prepared for the community

QUESTIONNAIRE FOR YEKA SUB-CITY COMMUNITIES

This questionnaire is prepared for the research paper to be written for partial fulfillment of master degree in Public management and policy from Addis Ababa University. The title of the research is “**practices and prospects of public participation in local economic development the case of yeka sub-city**“. Therefore, information from the residents of the sub-city is considered as vital input for the successful completion of this study. Hence you are kindly requested to complete the questions properly and return back to the researcher. I am grateful in advance for your cooperation extended to me.

- ✓ Any information that you give is used confidentially
- ✓ The trustworthiness of the information obtained from you determines the success of the study.

Prepared by: Girum H/giorgis Damena

Address: yeka Sub-City, woreda 01

- Mob: +251913647947

Addis Ababa University, School of Graduate Studies

Department of Public Management and Policy

Addis Ababa, Ethiopia

I. Bio-Data

1. Sex: Male Female

2. Age: Below 25 26 – 35 36 – 45 46 and Above

3. Educational achievement: Below grade 8 Grade 8 – 12
 10/12 + 1/2/3 Diploma 1st Degree Master and Above

4. Job condition: Government employee Self employer
 Job seeker

5. Address: Sub-city _____ Woreda _____ Qetena _____

I I. About Community Participation and challenge

1. Did Participatory community economic development take place in your locality?

Yes No

2. If your answer for question No 1 is yes, how old is it since started?

Above 10 years 5 – 9 years 1 – 4 years below 1 year

3. Among the following development projects in which one do you participated? (More than one answer is possible)

- Access road construction
- Drinking water construction
- Sport centers
- Kitchen construction
- Toilet Construction
- Sewerage tube
- Greening environments
- Housing construction for elders
- Health post constriction

Write hear if any other

4. In what way are you participating in the above development project (s)?

.....

5. Have you ever been participated in planning of local economic development activities in your locality?

Yes No

6. If your answer for question number 5 is yes: in which part of strategic planning you participated (multiple option possible)

- Need assessment
- Designing development strategy
- Prioritization of plans
- Development evaluation
- Determining the components in the plan

- Excessive pressure for immediate results than long term goals
- Lack of public interest to be involved in LED

Write here if any other

13. What do you think about the attitude of the people in participating LCD?

.....

III. Institutional frame work

1. Did you know that there is a directive to facilitate the participatory development work?

- Yes No

If your answer for question No 1, is “Yes”, answer the following questions

2. What is the contribution of the directive on the Participatory community economic development work?

.....

3. Describe the enactment process of the directive if you know some details.

.....

IV. About different committees of Participatory community economic development

1. Do you know that there are different committees appointed to coordinate and manage participatory development activities?

- Yes No

If your answer for question No 1, is “Yes”, answer the following questions

2. How was the committees appointed?

- Elected in city-wide election
- Selected by referendum
- Don't know clearly

Describe if there is any different way

.....

3. Is there a time where the community discussed with the committees?

Yes

No

4. If your answer for question No 3, is yes in what interval did they take place?

Per year twice a year per 3 months monthly

Write if any other

5. If your answer for question No 3 is Yes what was the agendas for the discussion?

.....

6. Write all the activities undertaken by the committees since their appointment

.....

.....

V. about the relationship between the community and government officials

1. Do you know that Participatory community economic development coordinators office is organized in different levels in the sub-city?

Yes

No

If your answer for question No 1, is “Yes”, please answer the following questions

2. How do you evaluate the Participatory community economic development coordinator’s support for voluntary participatory development workers?

Very good Good Medium Poor Very poor

3. For question No 2 if your answer, is Medium, Poor or Very Poor, please write the reasons

.....

.....

4. If your answer for question No 2, is Good or Very Good, please write your reason on the space provided

.....

5. describe the general relationship between the Participatory development works and the coordinator’s office in your understanding.

.....

VI. about the developmental activities undertaken by Participatory community economic development workers.

1. Is there any development activities done by community participation?

Yes

No

2. If your answer for question No 1, is Yes list out all the developmental activities undertaken

.....
.....

3. How do you evaluate the developmental activities undertaken by the participatory development workers?

Very good Good Medium Poor Very poor

4. Are the developmental activities done distributed fairly for all group of the community?

Yes

No

5. If your answer for Question No 4, is No please write your reasons.....

.....
.....
.....

Appendix - 3

2. Interview for Different Committee Members in Participatory community economic development Work

This interview is prepared for the research paper to be written for partial fulfillment of master degree in Public management and policy from Addis Ababa University. The title of the research is “**practices and prospects of public participation in local economic development the case of yeka sub-city.**” Therefore, information from different committee members of the sub-city Participatory community economic development workers is considered as vital input for the successful completion of this study. Hence you are kindly requested to complete the questions properly and return back to the researcher. I am grateful in advance for your cooperation extended to me.

- ✓ Any information that you give is used confidentially
- ✓ The trustworthiness of the information obtained from you determines the success of the study.

Prepared by: Girum H/giorgis

Address: yeka Sub-City, woreda 01

❖ Mob: +251913647947

Addis Ababa University, School of Graduate Studies

Department of Public Management and Policy

Addis Ababa, Ethiopia

I. Bio-Data

1. Sex: Male Female
2. Age: Below 25 26 – 35 36 – 45 46 and Above
3. Educational achievement: Below grade 8 Grade 8 – 12
 10/12 + 1/2/3 Diploma 1st Degree Master and Above
4. Job condition: Government employee Self employer
 Job seeker
5. Job Position in the office _____
6. Address: Sub-city _____ Woreda _____ Qetena _____

II. About the community’s Participation

- 1. How do you see the participation of the community?
.....
.....
- 2. Did the developmental activities embrace all segment of the community?
.....
.....
- 3. How do you describe the community’s involvement in development activities by their own initiative?
.....

III. About the directive (institutional frameworks)

- 4. Please tell me all the procedures in enacting the directive
.....
- 5. Did the enactment of the directive include all the stakeholders i.e. government bodies, the community and others? Describe in detail.
.....
.....
- 6. How much is the directive supporting the participatory development works done in the locality?
.....
.....
.....

IV. About the members of different committees

- 7. Please brief us about the appointment of the committees?
.....
.....
- 8. How do you describe the work performance of the committees?
.....
.....
.....

V. About the relationship between the government bodies and the community

9. How do you see the relationship between the participatory development coordinator's office and the community?

.....

.....

10. Is there a forum for the community, the committees and government bodies to discuss on local issues together?

.....

.....

VI. About the developmental activities undertaken by participation

11. Are there any development works done by the participatory development workers?

.....

.....

12. How was the participation of the community at the time of the development work?

.....

.....

13. Where did the request for development works emerged? And how is it decided?

.....

.....

14. What are the challenges on community participation?

.....

.....

Appendix - 4

3. Interview for Government Officials in the Participatory community economic development Coordination Office

This interview is prepared for the research paper to be written for partial fulfillment of master degree in Public management and policy from Addis Ababa University. The title of the research is “**practices and prospects of public participation in local economic development the case of yeka sub-city.**” Therefore, information from government officials of the sub-city participatory community economic development work is considered as vital input for the successful completion of this study. Hence you are kindly requested to complete the questions properly and return back to the researcher. I am grateful in advance for your cooperation extended to me.

- ✓ Any information that you give is used confidentially
- ✓ The trustworthiness of the information obtained from you determines the success of the study.

Prepared by: Girum H/giorgis

Address: yeka Sub-City, woreda 01

- Mob: +251913647947

Addis Ababa University, School of Graduate Studies

Department of Public Management and Policy

Addis Ababa, Ethiopia

I. Bio-Data

1. Sex: Male Female
2. Age: Below 25 26 – 35 36 – 45 46 and Above
3. Educational achievement: Below grade 8 Grade 8 – 12
 10/12 + 1/2/3 Diploma 1st Degree Master and Above
4. Job condition: Government employee Self employer
 Job seeker
5. Job Position in the office _____
6. Address: Sub-city _____ Woreda _____ Qetena _____

II. About the community's Participation

1. Do you believe that the communities are participating voluntarily in Participatory community economic development activities? If so describe the modalities and reasons to believe?

.....
.....
.....
.....

2. Did the developmental activities embrace all segment of the community? If so, how? If not, why?

.....
.....

3. Is there any formal organization designed by the government to enable all segment of the community participate in developmental activities?

.....
.....

4. How do you describe the community's involvement in development activities by their own initiative?

.....
.....
.....

III. About the directive

1. Please tell me all the procedures in enacting the directive

.....
.....
.....

2. If the directive is still working what comments did the community forwarded regarding the directive?

.....
.....

3. Who are the entities participated in the enactment of the directive?

.....

.....

.....

IV. About the members of different committees

1. Please brief us about the appointment of the committees?

.....

.....

.....

2. How do you describe the work performance of the committees?

.....

.....

.....

V. About the relationship between the government bodies and the community

1. How do you see the relationship between the participatory development coordinator's office and the community?

.....

.....

.....

2. Is there a forum for the community, the committees and government bodies to discuss on local issues together?

.....

.....

.....

VI. About the developmental activities undertaken by participation and challenges

1. Are there any development works done by the participatory development workers?

.....

.....

.....

2. How was the participation of the community at the time of the development work?

.....
.....
.....
.....

3. Where did the request for development works emerged? And how is it decided?

.....
.....
.....

4. What are the key factors for the community participation?

.....
.....
.....

GUIDE LINES FOR FOCUS GROUP DISCUSSION

1. About the Participation of the communities in the LED activities
2. The institutional frame works for community participation
3. The extent to which the community is participating in LED projects and its future prospects.
4. The challenges for effective public participation in LED projects
5. The attitude of the community towards public participation in LED projects.